

**Solon Road, Brixton, SW2**

2 bedroom flat - conversion for sale

**£580,000**

Share of Freehold

## Property Details

This share of freehold property offers comfortable dimensions throughout, with almost 800 square feet of internal living space and set over two floors, it truly feels like a home from the moment you walk through the door. A large, semi open-plan reception room spans the width of the house and overlooks the pretty terraced street below, with enough room to relax and unwind as well as being a cosy spot to dine in comfort. The fully equipped kitchen is partially separated whilst still being sociably connected to the space, making this an ideal spot to entertain guests and host dinner parties. Both bedrooms are decent doubles and located on separate floors, allowing for a desirable level of privacy if any potential purchasers are looking for a buy-to-let or to share with friends. There is a convenient WC as well as a modern family bathroom. This bright and characterful flat comes ready to move into, where the purchaser can enjoy taking their time to stamp their own mark without paying a premium for someone else's taste.

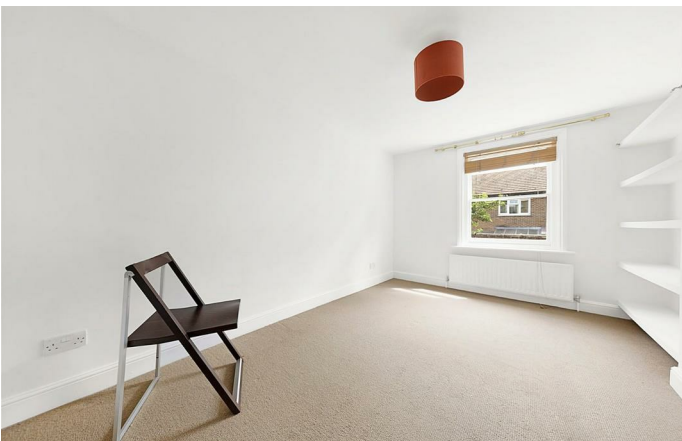
## Features

- Two double bedrooms
- Almost 800 square feet
- Split-level
- Victorian conversion
- Share of freehold
- Clapham and Brixton high streets in minutes
- Victoria line, Northern line and London overground in minutes
- Local amenities of Acre Lane
- Chain-free

Council tax band D

EPC rating D (67)





Solon Road, Brixton, SW2



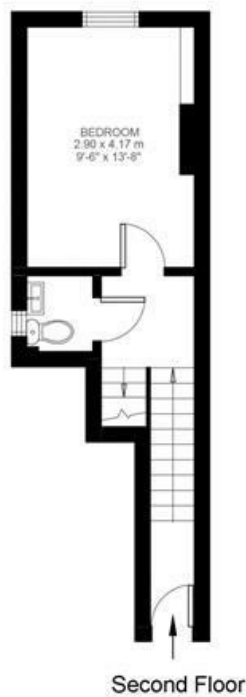
## 2 Bedroom Flat

Approx internal area:

**785 sqft 73 sqm**

While we do try our very best, floor plans are produced as a guide only and we take no responsibility for the precise accuracy with which any property is represented

# Solon Road



Solon Road, Brixton, SW2

