

Nicholas James



Russell Square, Brighton, BN1 2EE

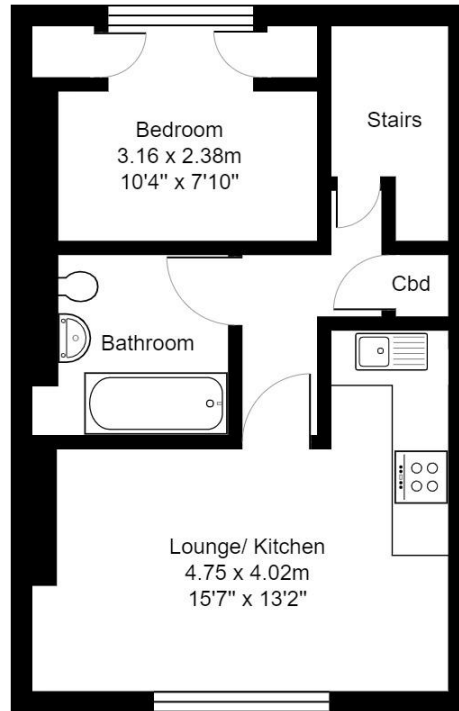
£240,000

- Top Floor Apartment
- No Onward Chain
- City Centre Location
- Double Bedroom

Delightful top floor City Centre apartment. This superb bright & spacious property is located moments from the popular shops, restaurants and cafés in the City Centre along with the seafront just moments away. Overlooking one of the city's oldest squares, this property occupies the top floor of this attractive period building with accommodation comprising; open plan living area, bathroom and double bedroom - quietly located to the rear of the property. The location will appeal to many with all the City has to offer right on your doorstep along with easy access to Brighton mainline station, providing regular and direct links to London.







Russel Square

Total Area: 34.1 m² ... 367 ft²

All measurements are approximate and for display purposes only.

Score	Energy rating	Current	Potential
92+	A		
81-91	B		
69-80	C		80 C
55-68	D	57 D	
39-54	E		
21-38	F		
1-20	G		