

## 146 Deepdale Road, Preston, PR1 6PY

Asking price £190,000

Highgate Homes are pleased to bring to market this spacious 6-bed terraced house for sale on Deepdale Road, Preston.

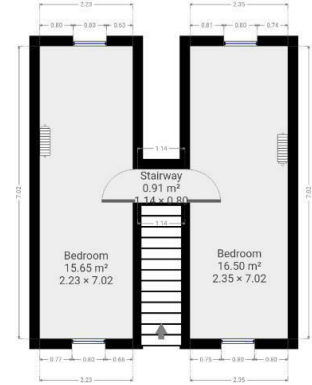
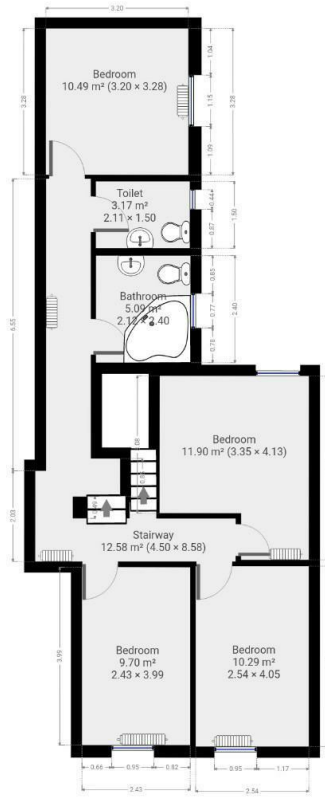
Set over 3 stories, the accommodation briefly comprises an entrance vestibule giving way to the 3 receptions. As you walk through the third reception, you are greeted by the kitchen, then a small utility room & then one of the WC's. Moving to the first floor, you will find 4 of the bedrooms, the family bathroom & the second WC. Moving to the second floor, you will find an attic conversion giving way to the final 2 bedrooms.

The property is in a very popular area of Preston, close to a wide variety of schools, shops and other local amenities. In particular, the property is located close to Preston North End Football Club & Moor Park with excellent links to Deepdale Retail Park & Preston City Centre.

With its 6 bedrooms, 3 receptions & excellent location, this would make a great home for a large family, call Highgate Homes today on 01772 651165 to get booked in for a viewing!



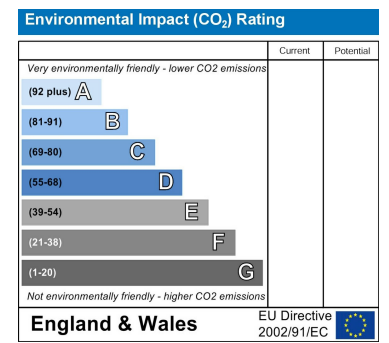
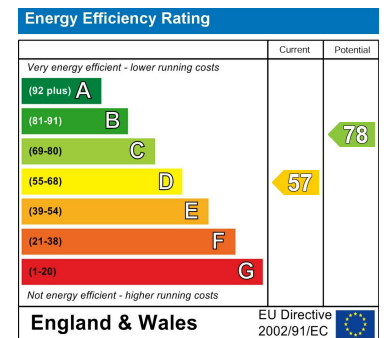
# Floor Plan



# Area Map



# Energy Efficiency Graph



These particulars, whilst believed to be accurate are set out as a general outline only for guidance and do not constitute any part of an offer or contract. Intending purchasers should not rely on them as statements of representation of fact, but must satisfy themselves by inspection or otherwise as to their accuracy. No person in this firm's employment has the authority to make or give any representation or warranty in respect of the property.