

JOHNSONS & PARTNERS

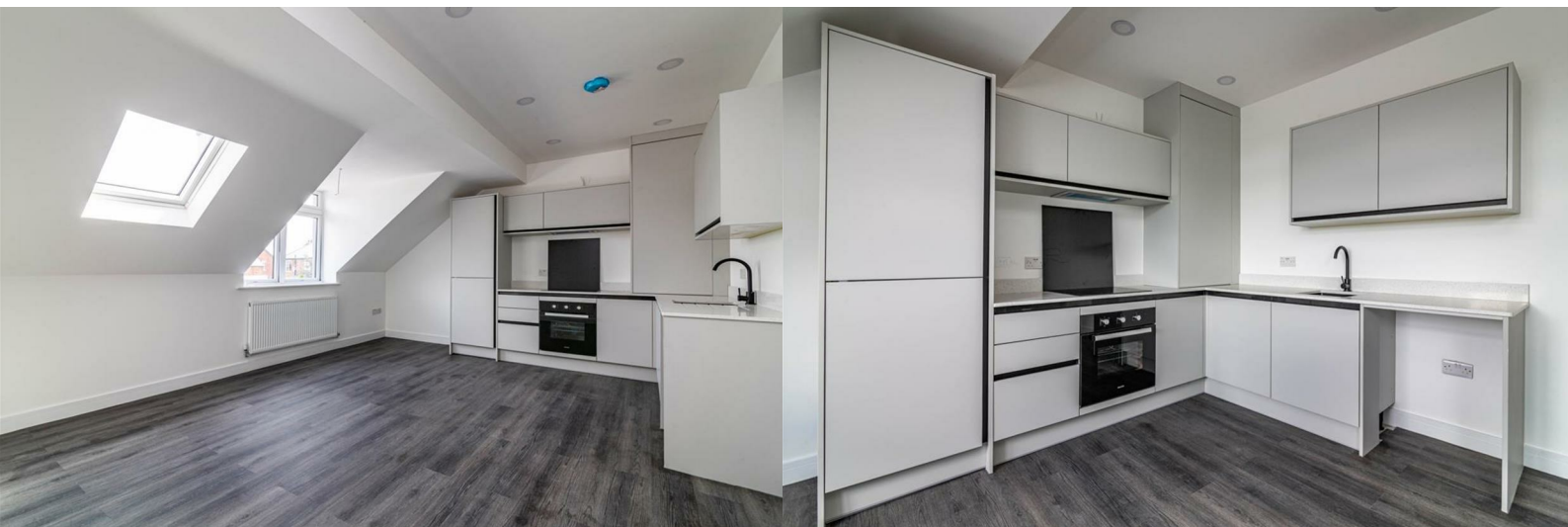
Estate and Letting Agency



2D RANMOOR ROAD, GEDLING

NOTTINGHAM, NG4 3FW

£795



2D RANMOOR ROAD

GEDLING, NOTTINGHAM, NG4 3FW

£795



We are pleased to offer TO LET this bespoke development of six brand new luxury one and two bedroom apartments, located centrally in Gedling village and ready to move into from mid July.

Set over two floors the apartments have been recently constructed and all carpets, kitchens and bathrooms are brand new.

All apartments have open plan contemporary living, kitchen and dining areas & luxury bathrooms or shower rooms.

Each apartment has a parking space and all viewings will be strictly by prior appointment.

People will not be allowed onto site whilst the building works are concluded unless accompanied by a member of staff.

[Entrance Hallway](#)

[Open Plan Kitchen / Living Area](#)

[Bedroom One](#)

[Bedroom Two](#)

[Bathroom](#)

[Outside](#)

[Parking](#)

[Agents Notes](#)

Whilst every care has been taken to prepare the property particulars, they are for guidance purposes only and do not constitute any part of a contract. The measurements are approximate and are for general guidance purposes only. Whilst we try to ensure their accuracy, they should not be relied upon as exact measurements and potential interested parties are advised to re-check the measurements for accuracy.

[Anti Money Laundering Regulations](#)

Under the Protecting Against Money Laundering and the Proceeds of Crime Act 2002, Johnsons and

Partners require any successful purchasers proceeding with a purchase to provide two forms of identification i.e. passport or photocard driving license and a recent utility bill. This evidence will be required prior to Johnsons and Partners instructing solicitors in the purchase or the sale of a property.

[Viewings](#)

Please contact the office to make an appointment to view. We often, in times of high demand, offer block viewings and therefore you will have an allocated time of between 10 and 15 minutes within the block time. In these cases we respectfully ask people to be prompt so as not to miss their time slot and let the office know if they will be delayed.

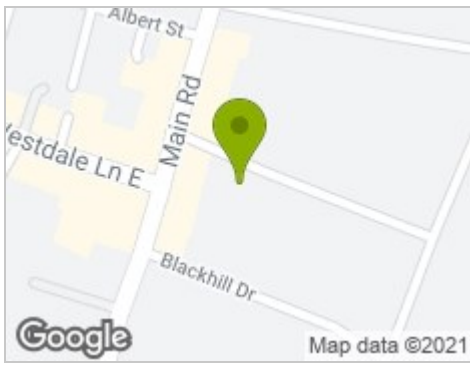
[Deposits](#)

The successful applicant will be required to pay a hold deposit equivalent to 1 weeks rent before referencing.

Prior to move in we will require a deposit equivalent to 5 weeks rent along with the first months rent. Any holding deposit will be deducted from these amounts.

More Photos Coming Soon

Road Map



Hybrid Map



Terrain Map



Floor Plan



Viewing

Please contact our Gedling Office on 0115 855 6622 if you wish to arrange a viewing appointment for this property or require further information.

Energy Efficiency Graph



These particulars, whilst believed to be accurate are set out as a general outline only for guidance and do not constitute any part of an offer or contract. Intending purchasers should not rely on them as statements of representation of fact, but must satisfy themselves by inspection or otherwise as to their accuracy. No person in this firm's employment has the authority to make or give any representation or warranty in respect of the property.