



Lynmouth Grove, Stoke-on-Trent, ST6 6PU
Asking Price Of £134,950 Freehold



Lynmouth Grove, Packmoor, Stoke-on-Trent

2 Bedrooms, 1 Bathroom

Asking Price Of £134,950

- Semi Detached Bungalow
- Two Bedrooms
- Virtual Tour Available
- Double Glazed
- Gas Central Heating
- Gardens To Front And Rear
- Drive And Garage

Relax, unwind, enjoy the tranquil easy lifestyle of a well laid out single storey home. Martin & Co welcome to market this well presented semi detached bungalow. The property comprises of kitchen, lounge, shower room and two bedrooms, There is a drive providing off road parking, single garage and gardens to the front and rear. The property is double glazed and has gas central heating. No chain.



Energy Efficiency Rating		Current	Potential
Very energy efficient - lower running costs			
(92-100)	A		
(81-91)	B		89
(69-80)	C		
(55-68)	D	68	
(39-54)	E		
(21-38)	F		
(1-20)	G		
Not energy efficient - higher running costs			
England, Scotland & Wales		EU Directive 2002/91/EC	

ENTRANCE HALL 10' 2" x 3' 10" (3.11m x 1.17m)
Entered via part glazed door. Laminate flooring, wall mounted central heating radiator and with doors leading off.

KITCHEN 13' 3" x 5' 2" (4.05m x 1.58m) Fitted kitchen comprising of a range of base units with contrasting worktops over and wall units. Stainless steel sink and drainer. Space for free standing cooker with extractor over. Vinyl flooring, wall mounted central heating radiator and UPVC double glazed window to front elevation.

LOUNGE 12' 4" x 11' 5" (3.78m x 3.49m) Carpeted flooring, wall mounted central heating radiator, feature fireplace and UPVC double glazed bay window to front elevation.

SHOWER ROOM 7' 3" x 5' 6" (2.23m x 1.68m) White suite comprising low level WC, pedestal wash hand basin and shower cubicle. Part tiled walls, vinyl flooring and wall mounted central heating radiator.

BEDROOM 10' 7" x 10' 0" (3.24m x 3.06m) Carpeted flooring, wall mounted central heating radiator and UPVC double glazed window to rear elevation.

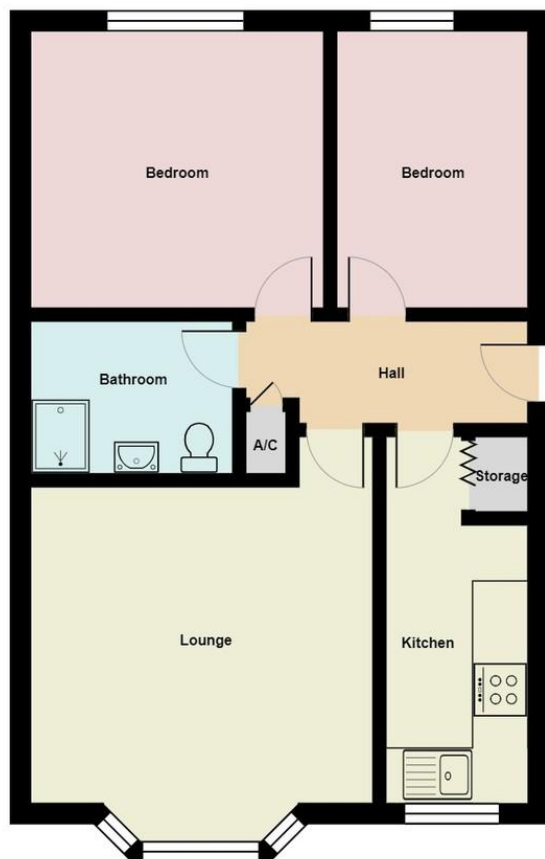
BEDROOM 10' 0" x 6' 11" (3.06m x 2.11m) Laminate flooring, wall mounted central heating radiator and UPVC double glazed window to rear elevation.

EXTERNALLY To the front of the property there is a garden laid to lawn and planted with mature shrubs. To the side of the property there is a driveway which leads to the single garage. There is also a pleasant garden to the rear with mature shrubs, patio area and which is laid to lawn.









All measurements are approximate and for display purposes only

Martin & Co Stoke on Trent

12 Albion Street • Stoke-On-Trent • ST1 1QH
T: 01782 262880 • E: stokeontrent@martinco.com

01782 262880

<http://www.martinco.com>



Accuracy: References to the Tenure of a Property are based on information supplied by the Seller. The Agent has not had sight of the title documents. A Buyer is advised to obtain verification from their Solicitor. Items shown in photographs including but not limited to carpets, fixtures and fittings are not included unless specifically mentioned within the sales particulars. They may however be available by separate negotiation. Buyers must check the availability of any property and make an appointment to view before embarking on any journey to see a property. No person in the employment of the agent has any authority to make any representation about the property, and accordingly any information given is entirely without responsibility on the part of the agents, sellers(s) or lessors(s). Any property particulars are not an offer or contract, nor form part of one. **Sonic / Laser Tape:** Measurements taken using a sonic / laser tape measure may be subject to a small margin of error. **All Measurements:** All Measurements are Approximate. **Services Not tested:** The Agent has not tested any apparatus, equipment, fixtures and fittings or services and so cannot verify that they are in working order or fit for the purpose. A Buyer is advised to obtain verification from their Solicitor or Surveyor.