

241 Deansgate, Manchester, Lancashire, M3 4EL

Tel: 0161 637 8336

Email: contactus@ascendproperties.com

www.ascendproperties.com

Ascend

Built on higher standards



Deansgate Square, Owen Street, Manchester

£1,400 PCM

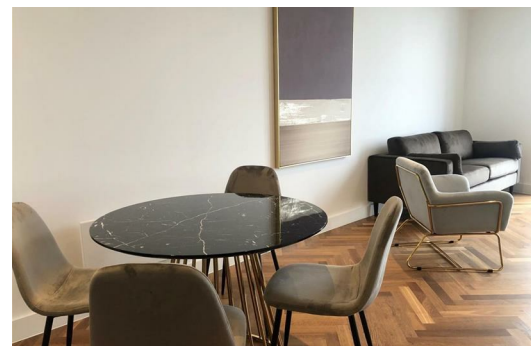
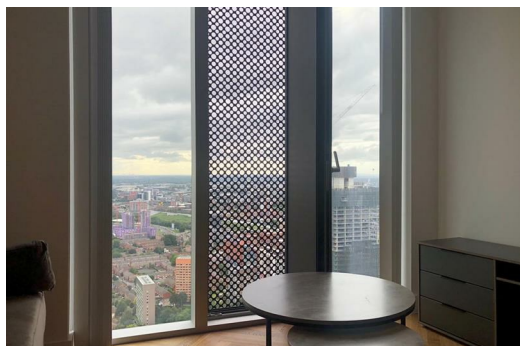
VIDEO/VIRTUAL TOUR AVAILABLE

An ultra-stylish, two bedroom furnished apartment to rent in the South Tower of Deansgate Square. Think high-spec, stylish living with endless views. Living here gives you private access to the most prestigious amenities, and soon-to-be completed swimming pool. Manchester's most premium address, this impressive development comprises 4 glass towers that literally raise the city's skyline.

Amenities are simply out of this world. You can enjoy full workouts in the 1,900 sq. ft gym & have a game of tennis in the indoor courts. Did we mention the pool? That's due for completion in the summer, so you can cool down when those hot months hit. Aside from leisure, Deansgate Sq also boasts its own rooftop garden complete with a private bar & catering facilities – an exclusive extra that is for residents only, so you can ensure your cocktails & views are for you & your neighbours only.

When you step inside this sleek two-bedroom apartment on the 47th floor, you'll be instantly amazed. Floor to ceiling windows are not shy here, creating a bright & happy vibe throughout. Décor wise, the sophisticated wooden floor contrasts perfectly with the high-spec integrated kitchen & premium theme. You'll find fully integrated appliances & a fitted wine chiller, as well as USB sockets dotted around.

Wake up to sunshine in the bedroom of dreams & enjoy breath-taking views each day. Trust us, you'll want to stay in bed forever with this setup! As for the master bathroom, this is a well sized room that's fully tiled with subtle marble



Two Bedroom

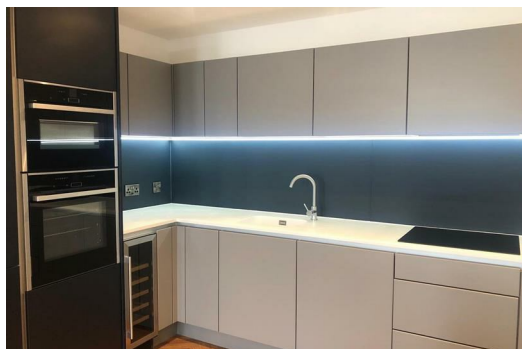
APARTMENT | 2B.01

- Kitchen
- Living Room
- Bathroom
- Bedroom 1
- Bedroom 2
- En-suite
- External
- Concierge
- Outside
- Hallway
- Bedroom



SIZES	METRIC (FT)	IMPERIAL
LOUNGE / KITCHEN	7.73 x 3.50	25'4" x 11'5"
BEDROOM	4.56 x 2.84	14'11" x 9'3"
BEDROOM 2	3.66 x 3.21	12'0" x 10'6"

OVERALL:
73.20 M² | 788 FT²



Energy Efficiency Rating		Environmental Impact (CO ₂) Rating	
Current	Potential	Current	Potential
85	85	87	87