

241 Deansgate, Manchester, Lancashire, M3 4EL

Tel: 0161 637 8336

Email: contactus@ascendproperties.com

www.ascendproperties.com

Ascend

Built on higher standards



Millington House, 57 Dale Street, Manchester

£700 PCM

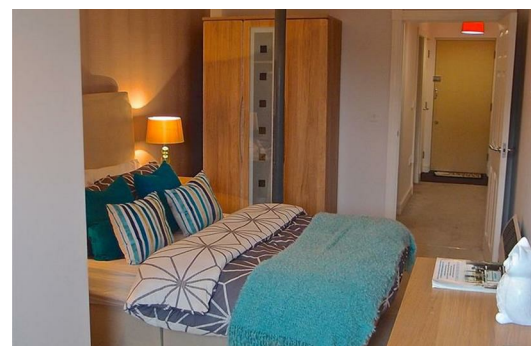
This stunning Grade II listed conversion rests in the heart of Manchester's hip and vibrant Northern Quarter and is absolutely perfect for tenants looking to live in the thick of all the action.

With tonnes of space to spare, this fab one bedroom apartment comes complete with double-height ceilings and large windows which show this apartment off to its full potential and give you plenty of Manchester's sunny skies. Inside you'll find a super-swish design throughout with high-quality, contemporary furniture. The double bedroom is bright and airy with more than enough room to spread out and the master bathroom is ultra-stylish and modern.

The location couldn't be more spot-on either. Piccadilly train station is literally just a 2 minute stroll away - how perfect is that? So whether it's for work or play, the whole of Manchester is your oyster.

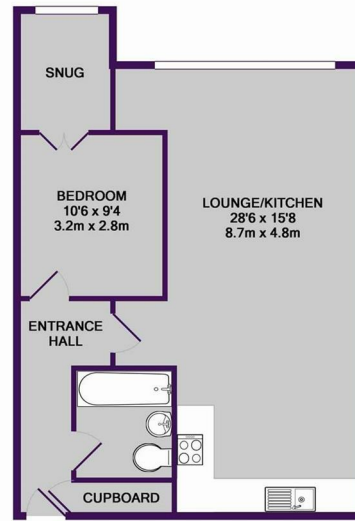
If you're interested in having a closer look or have any questions, do get in touch. And just so you know, the pictures for this apartment are for marketing purposes only, so the internal fixtures, fittings and furnishings may vary.

Available 22nd June 2021

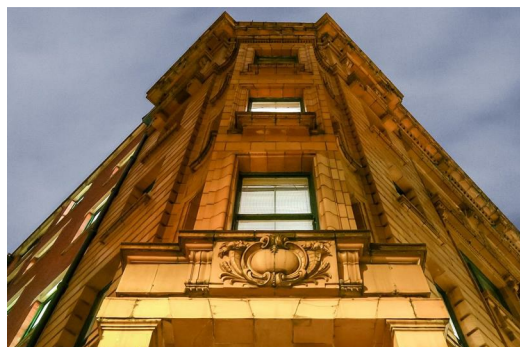
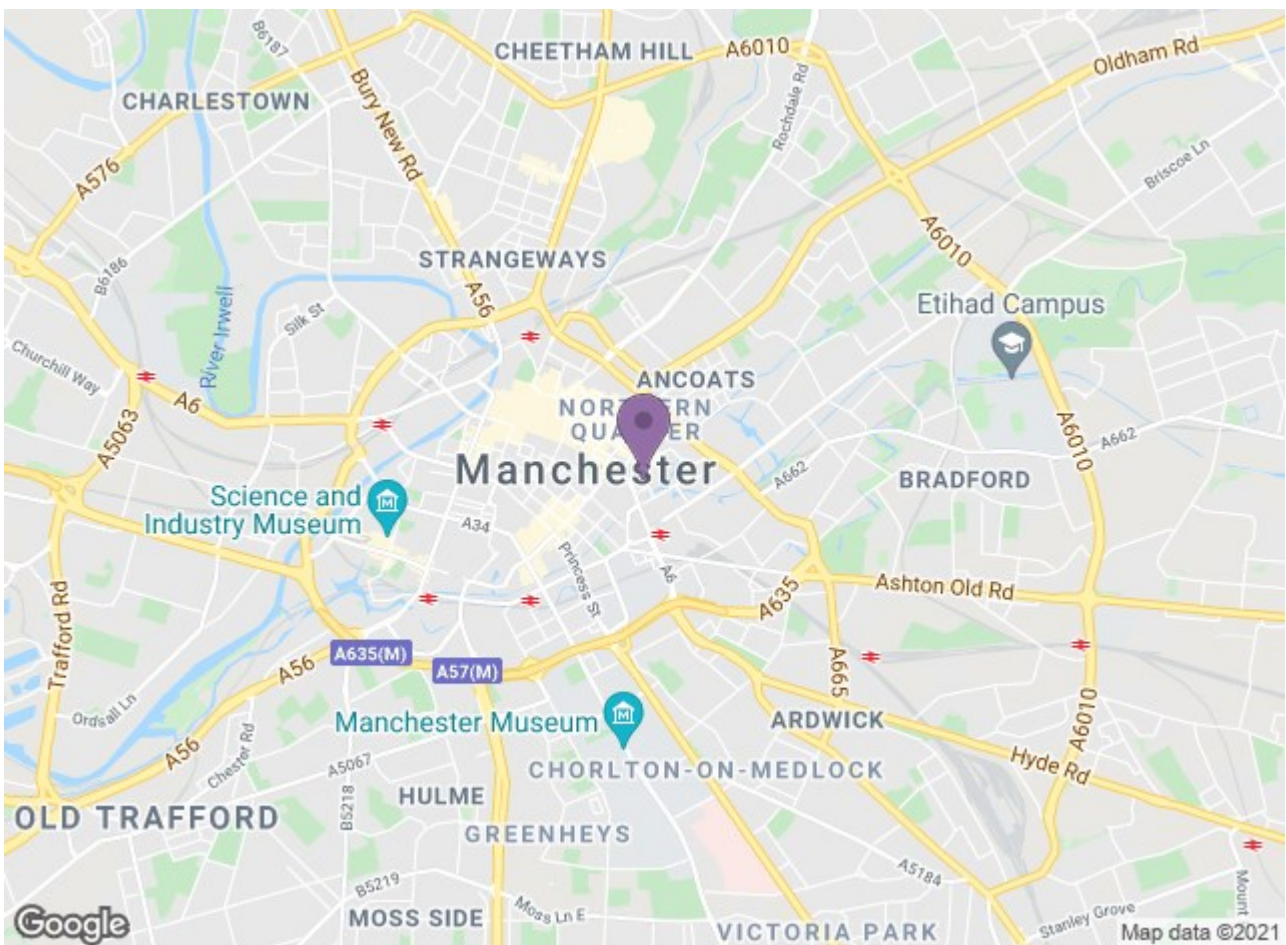


Living room and kitchen
 28'6" x 15'8" (8.7 x 4.8)
 Huge open plan living room and kitchen with double height ceilings and huge bay windows.

Bedroom
 10'5" x 9'2" (3.2 x 2.8)
 Great sized double bedroom with the high ceilings again but also the double doors lead to the properties snug which is great for storage or a walk in wardrobe.



TOTAL APPROX. FLOOR AREA 640 SQ.FT. (59.5 SQ.M.)
 Whilst every attempt has been made to ensure the accuracy of the floor plan contained here, measurements of doors, windows, rooms and any other items are approximate and no responsibility is taken for any error, omission, or mis-statement. This plan is for illustrative purposes only and should be used as such by any prospective purchaser. The services, systems and appliances shown have not been tested and no guarantee as to their operability or efficiency can be given.
 Made with Metropix ©2015



Energy Efficiency Rating		Environmental Impact (CO ₂) Rating	
Band	Score	Band	Score
A	92-100	A	1-10
B	81-91	B	11-20
C	69-80	C	21-30
D	55-68	D	31-40
E	39-54	E	41-50
F	13-38	F	51-60
G	1-12	G	61-70