



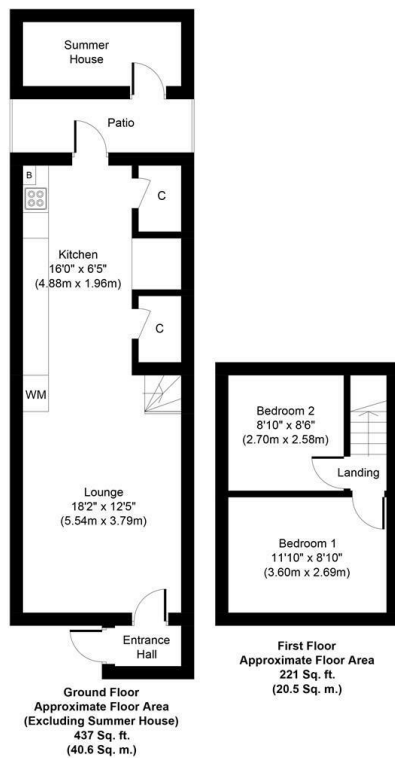
**Capital Homes**
Estate Agents & Valuers

202 Moselle Avenue, London N22 6EX
£430,000

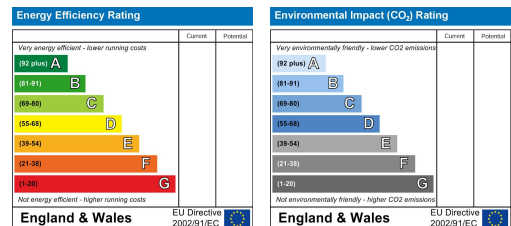
Available for sale is this two-bedroom terraced house that comprises of a large front reception, well proportioned kitchen area, downstairs bathroom, adequate storage, rear garden with summer house and two double bedrooms.

Moselle Avenue is situated within a short walk to Wood Green Underground Station (Zone 3), local bus services, Alexandra Palace Station, The Mall and countless other amenities along Wood Green High Street.

The property is in need of modernization and more pictures will follow imminently, to prepare your viewing in advance, please contact Capital Homes on 0208-342-555, early viewings highly recommended to avoid disappointment!



Whilst every attempt has been made to ensure the accuracy of the floor plan contained here, measurements of doors, windows, rooms and any other items are approximate and no responsibility is taken for any error, omission, or mis-statement. This plan is for illustrative purposes only and should be used as such by any prospective purchaser or tenant. The services, systems and appliances shown have not been tested and no guarantee as to their operability or efficiency can be given.
Copyright V360 Ltd 2021 | www.houseviz.com



1 Turnpike Lane
London
N8 0EP

0208 342 5555
info@capitalhomesestates.co.uk
www.capitalhomesestates.co.uk

Agents Note: Whilst every care has been taken to prepare these particulars, they are for guidance purposes only. All measurements are approximate are for general guidance purposes only and whilst every care has been taken to ensure their accuracy, they should not be relied upon and potential buyers/tenants are advised to recheck the measurements