

Property Connections



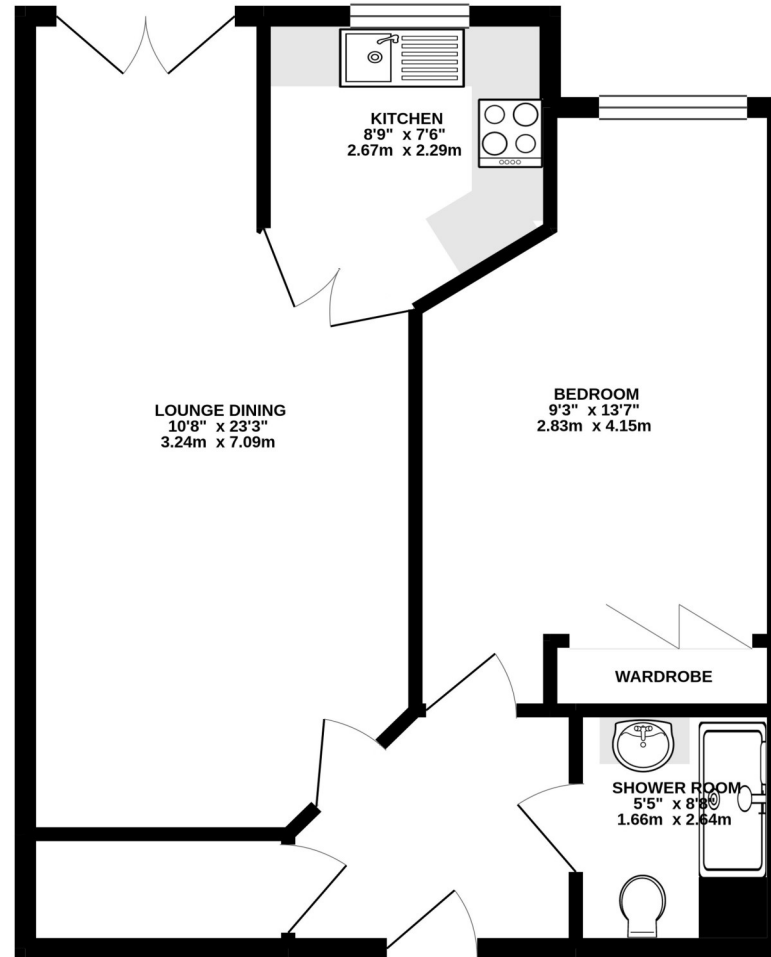
Estate Agent

01506 650 550



28 Flat 27 Roseburn Terrace, Murrayfield
Offers Over £169,000

Floor Plan



28 Flat 27 Roseburn Place is a superb retirement property forming part of a popular McCarthy & Stone modern development situated in the highly desirable residential area of Roseburn, within easy reach of a variety of local amenities and the city centre. The property itself offers tastefully presented, well proportioned accommodation and benefits from a delightful open outlook over the Water of Leith, access to well maintained communal garden grounds and private residents parking.

This impressive retirement development has a house manager, 24hr careline alarm service, lift access to all floors, residents lounge, laundry room and guest suite. Residents must be 60 years of age, or for couples one must be at least 60 and the other at least 55.

The accommodation, which is accessed via a secure shared entrance with lift access, comprises: Entrance hall, lounge dining, kitchen, double bedroom, shower room, large storage cupboard and private parking.

The entrance hall is carpeted and benefits from a large storage cupboard.

With delightful views over the water of Leith the fabulous bright and welcoming lounge dining boasts a Juliette balcony, fire, carpet flooring and access is given to the kitchen via french doors.

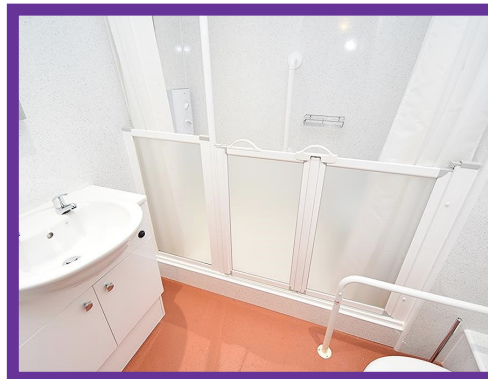




The sleek modern kitchen boasts a good selection of base and wall mounted units, with stylish worktops, matching splashback, integrated oven, hob and sink with drainer.

Bedroom benefits from fitted wardrobes, carpet flooring and soft neutral décor.

Shower room is complete with a shower enclosure with half height easy care shower screen, electric shower, vanity unit with sink, W,C, wet wall panels and stylish flooring.





Communal lounge is located on the ground floor with access to the gardens. There is also a guest suite and laundry room.





Attractive gardens with seating area and views from the Juliette balcony in the lounge look over the water of Leith.

Whilst the above particulars are believed to be correct, they are not warranted and do not form part of any contract.