



David Astburys



Beatrice Road, Stroud Green N4  
£425,000  
Share of Freehold

15 Park Road, Crouch End, London, N8 8TE  
davidastburys.com  
0203 000 6787 | sales@davidastburys.com

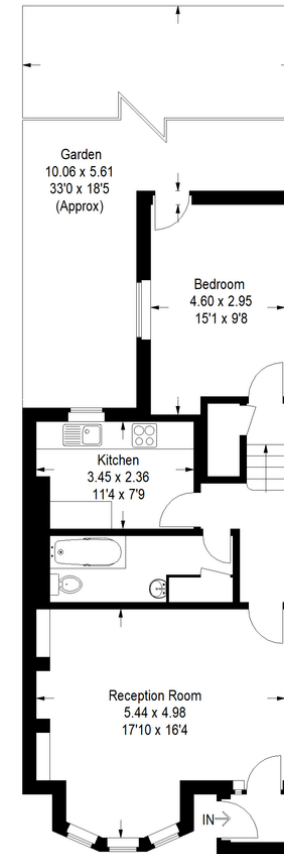
15 Park Road, Crouch End, London, N8 8TE  
davidastburys.com  
0203 000 6787 | sales@davidastburys.com

- Share of Freehold
- Private Garden
- Private Entrance
- 663 Square Feet
- Period Conversion
- Large Reception Room
- 0.2 Miles to St Aidan's Primary School
- Harringay Station 0.2 miles



## Beatrice road, N4

Approximate Gross Internal Area  
61.6 sq m / 663 sq ft



Lower Ground Floor

To be used for identification and guidance purposes only. Whilst every care is taken in the preparation of this plan, please check all dimensions, shapes and compass bearings before making any decisions reliant upon them.  
www.eijahk.co.uk ©2021 info@eijahk.co.uk

**Agents Note:** Whilst every care has been taken to prepare these sales particulars, they are for guidance purposes only. All measurements are approximate and are for general guidance purposes only and whilst every care has been taken to ensure their accuracy, they should not be relied upon and potential buyers are advised to recheck the measurements.