



Prebend Mansions, London, W4 2LU

£975,000

WHITMAN & CO.

SALES · LETTINGS · COMMERCIAL

- 29' Double reception room
- Two double bedrooms
- Luxury wet room
- 15 x 15 Kitchen / breakfast room
- Extensive built in storage
- Share in the freehold

Tenure - Leasehold (Share of Freehold)
 Length of lease - 950 Years +
 Ground Rent - Peppercorn
 Service Charge - £4500/5000 PA
 Local Authority - Hounslow
 Council Tax - Band F

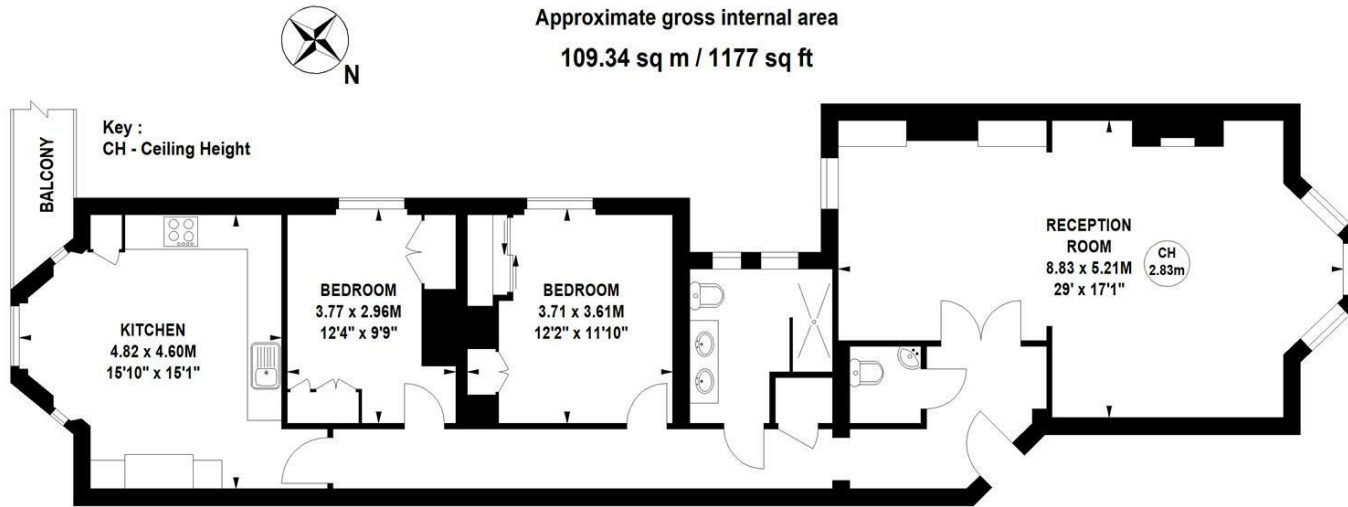
THE PROPERTY

An immaculately presented first floor Mansion flat ideally situated in this central Chiswick location offering close proximity to all amenities. Accommodation comprises; 29' Double reception room, two double bedrooms, luxury wet room, 15x15 bespoke kitchen / breakfast room, cloakroom / utility, extensive built in storage, share in the freehold. Situated in this prestigious Mansion block offering close proximity to both Stamford Brook and Turnham Green tube stations as well as the shopping, bar and restaurant facilities on Chiswick High Road.

Prebend Mansions, Chiswick High Road, W4

Approximate gross internal area

109.34 sq m / 1177 sq ft



First Floor

Not to scale, for guidance only and must not be relied upon as a statement of fact.
 All measurements and areas are approximate only

SITUATION



5-7 Turnham Green Terrace, Chiswick, London, W4 1RG

Tel 020 8747 8800

E-mail sales@whitmanandco.com

Website www.whitmanandco.com