



Forest Edge, Stoke-on-Trent, ST6 2PY
Asking Price Of £75,995 Leasehold



Forest Edge, Sneyd Street, Stoke-on-Trent

1 Bedroom, 1 Bathroom

Asking Price Of £75,995

- One Bedroom State of The Art Apartment
- Unusual Quirky Layout
- Open Plan Living pace
- Investment Opportunity
- Allocated Parking
- Neutral Decor
- Flooded With Natural Light



Looking for something a little different? Take a closer look at this.....Martin & Co welcome to market a quirky one bedroom apartment. Flooded by natural light giving a sense of space with an almost industrial New York Loft Style feel. The property comprises open plan living space, double bedroom and bathroom. There is allocated parking. Conveniently located for Hanley Festival Park, Hanley Town Centre and A500/M6 road network.



Energy Efficiency Rating		Current	Potential
Very energy efficient - lower running costs			
(92-100)	A		
(81-91)	B		86
(69-80)	C	76	
(55-68)	D		
(39-54)	E		
(21-38)	F		
(1-20)	G		
Not energy efficient - higher running costs			
England, Scotland & Wales		EU Directive 2002/91/EC	

OPEN PLAN LIVING SPACE 27' 7" x 15' 8"
(8.41m x 4.79m) Bright and flooded with natural light from floor to ceiling double glazed windows and a glazed door which opens onto a Juliette balcony. The kitchen area comprises of a range of storage cupboards and worktops with a stainless steel sink and drainer with mixer tap over. Cooking facilities are provided by an electric hob with an oven below. There is space for fridge, freezer and space and plumbing for washing machine.

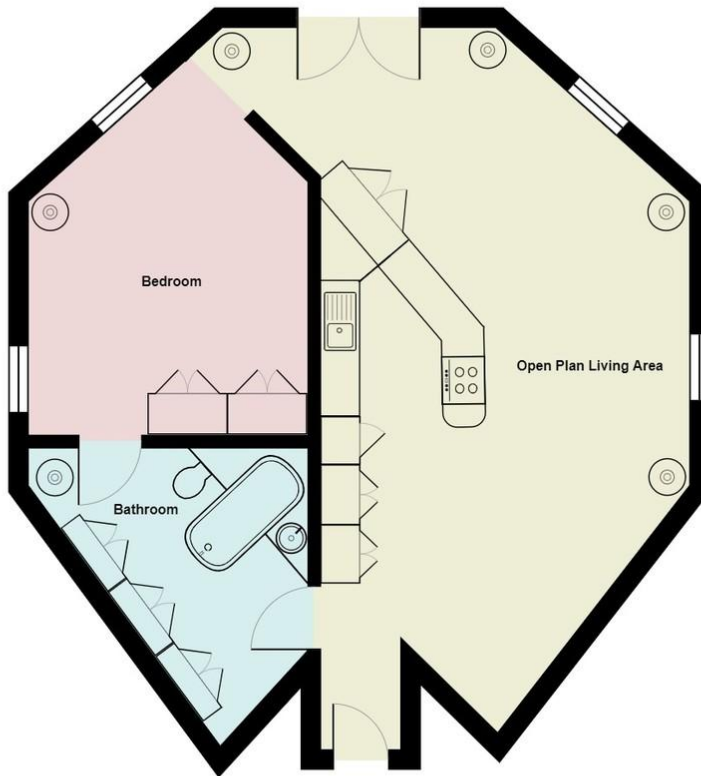
BEDROOM 14' 7" x 10' 3" (4.47m x 3.14m)
Double bedroom with two floor to ceiling double glazed windows, built in wardrobes and wall mounted electric heaters.

BATHROOM 14' 10" x 10' 3" (4.54m x 3.14m)
White suite comprising of low level WC, round ceramic sink with mixer tap over bath with shower head off the taps. There is plenty of built in storage space. Wall mounted heated towel rail.









Second Floor

All measurements are approximate and for display purposes only

Martin & Co Stoke on Trent

12 Albion Street • Stoke-On-Trent • ST1 1QH
T: 01782 262880 • E: stokeontrent@martinco.com

01782 262880

<http://www.martinco.com>



Accuracy: References to the Tenure of a Property are based on information supplied by the Seller. The Agent has not had sight of the title documents. A Buyer is advised to obtain verification from their Solicitor. Items shown in photographs including but not limited to carpets, fixtures and fittings are not included unless specifically mentioned within the sales particulars. They may however be available by separate negotiation. Buyers must check the availability of any property and make an appointment to view before embarking on any journey to see a property. No person in the employment of the agent has any authority to make any representation about the property, and accordingly any information given is entirely without responsibility on the part of the agents, sellers(s) or lessors(s). Any property particulars are not an offer or contract, nor form part of one. **Sonic / Laser Tape:** Measurements taken using a sonic / laser tape measure may be subject to a small margin of error. **All Measurements:** All Measurements are Approximate. **Services Not tested:** The Agent has not tested any apparatus, equipment, fixtures and fittings or services and so cannot verify that they are in working order or fit for the purpose. A Buyer is advised to obtain verification from their Solicitor or Surveyor.