



****AVAILABLE JULY 2021****

****STUNNING JESMOND DENE**

VIEWS** A four bedroom renovated mid terrace Edwardian house, with lush green views of Jesmond Dene! Set over three floors, this property combines modern living with period charm and would make the perfect family home!

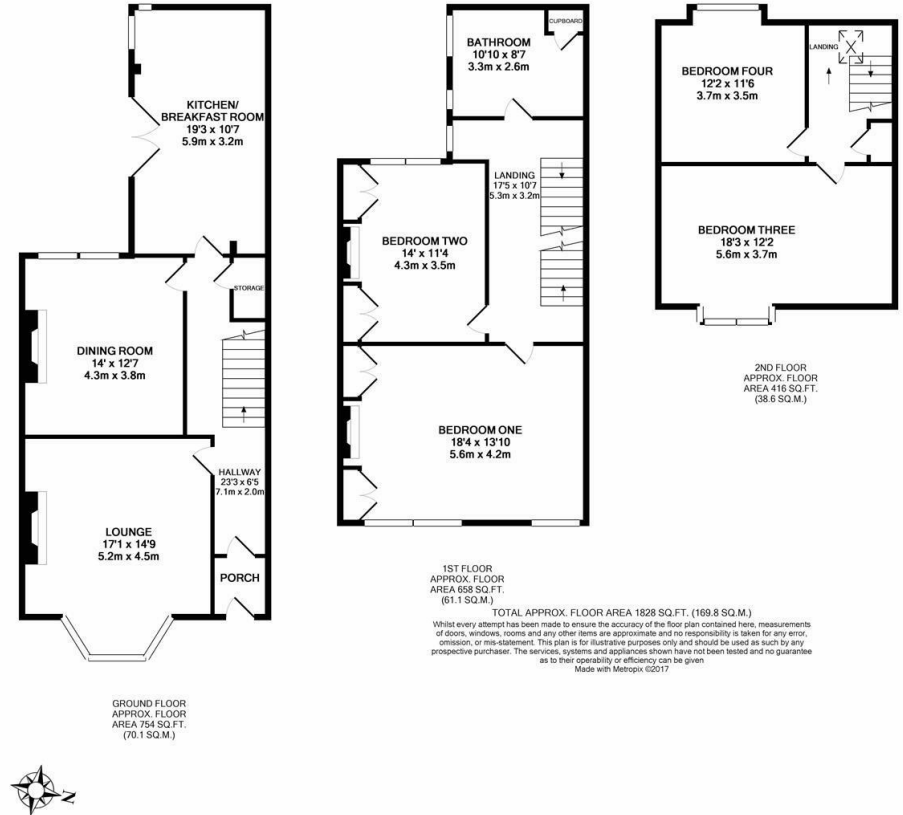
Idyllically situated on Lansdowne Gardens, Jesmond Vale, this wonderful house looks out onto Jesmond Dene and has been beautifully refurbished throughout. The location offers a superb choice of cafés, shops and restaurants all nearby, excellent local schools and close Newcastle City Centre. Offering in excess of 1,800 Sq. ft and set over three storeys, the ground floor has an entrance lobby, entrance hall, lounge with walk-in bay & feature fireplace with wood burning stove, dining room/ office with wood flooring and a stylish re-fitted & extended breakfasting kitchen to the rear, with double UPVC French doors out on to a private yard. The first floor boasts an impressive full-width master bedroom to the front, with exquisite green views over the Dene and fitted wardrobes. There is also a plush re-fitted family bathroom and a second double bedroom with fitted wardrobes. To the second floor, another two double bedrooms, both with dormer windows. All bedrooms boast super king size beds, there is all new double glazed sliding-sash windows throughout and gas central heating. Externally there is a town garden to the front



and a yard to the rear with a shed for storage, an early internal inspection is highly recommended to appreciate the accommodation on offer!

Please Note: This property can only be let to a family or maximum of two individual sharers.

Available 28th July 2021 | £1,500pcm | Victorian Mid-Terrace | 1,828 Sq. ft (169.8m²) | Three Storeys | Four Double Bedrooms | Stunning Jesmond Dene Outlook | Fabulous Breakfasting Kitchen | Modern Re-fitted Bathroom WC | Lounge | Dining Room/ Office | Eaves Storage | Furnished | Great Location | Front Town Garden | Rear Yard | GCH & DG | EPC Rating: D



£1,500 PCM

Misrepresentation Act 1967. These particulars and the descriptions and measurements herein do not constitute representation and whilst every effort has been made to ensure accuracy, this cannot be guaranteed.

