

Tibberton Grove

Cheltenham GL51 6UH

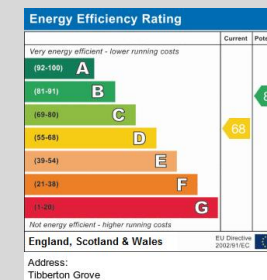
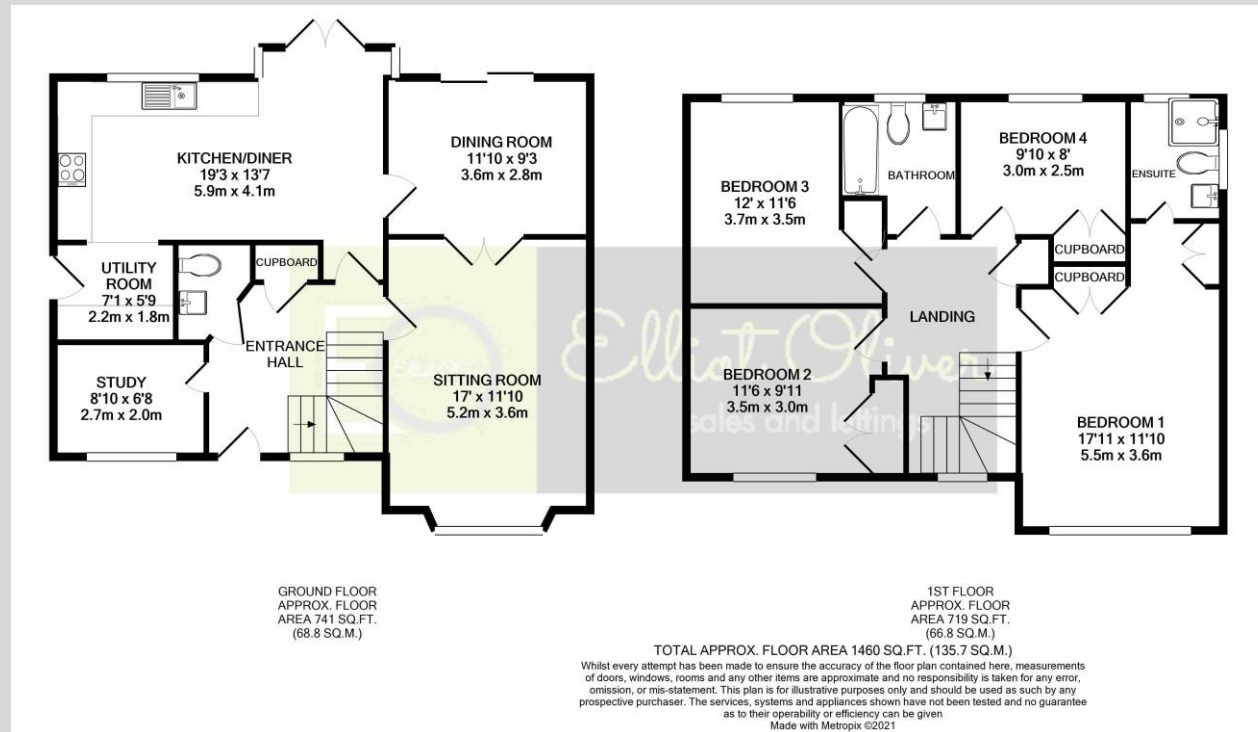


Tibberton Grove, Cheltenham GL51 6UH

This four bedroom detached family home is set within a quiet cul de sac in the popular location of The Reddings. The home is beautifully presented throughout and briefly comprises:- entrance hall, spacious living room which features a fireplace and bay window, there are double doors which lead into dining room giving the option of having an open plan space, the kitchen / breakfast room is at the rear of the home with a useful utility room just off, lastly on the ground floor is a study and WC. Upstairs offers four double bedrooms which all benefit from built in wardrobes, an en suite to the main bedroom and a family bathroom. To the front of the property is a double garage and off road parking, to the rear is a private garden with patio area. The property further benefits from being close by to great schooling for all ages and is within easy commute to the M5.







OFFICE
101 Promenade,
Cheltenham,
Gloucestershire, GL50
1NW
info@elliotoliver.co.uk

Agents Note: Whilst every care has been taken to prepare these sales particulars, they are for guidance purposes only. All measurements are approximate and for general guidance purposes only and whilst every care has been taken to ensure their accuracy, they should not be relied upon and potential buyers are advised to recheck the measurements