



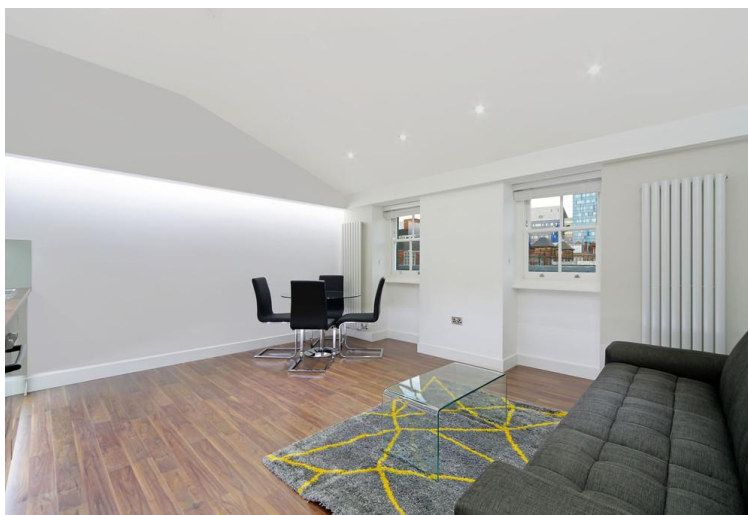
NET
LETTINGS
.COM

Flat 3, Rai House, New Road

London, E1 1HH

£2,400 pcm Fees Apply

- Brand New
- Modern Fully Integrated Designer Kitchen With All Mod Cons
- Wooden Floors





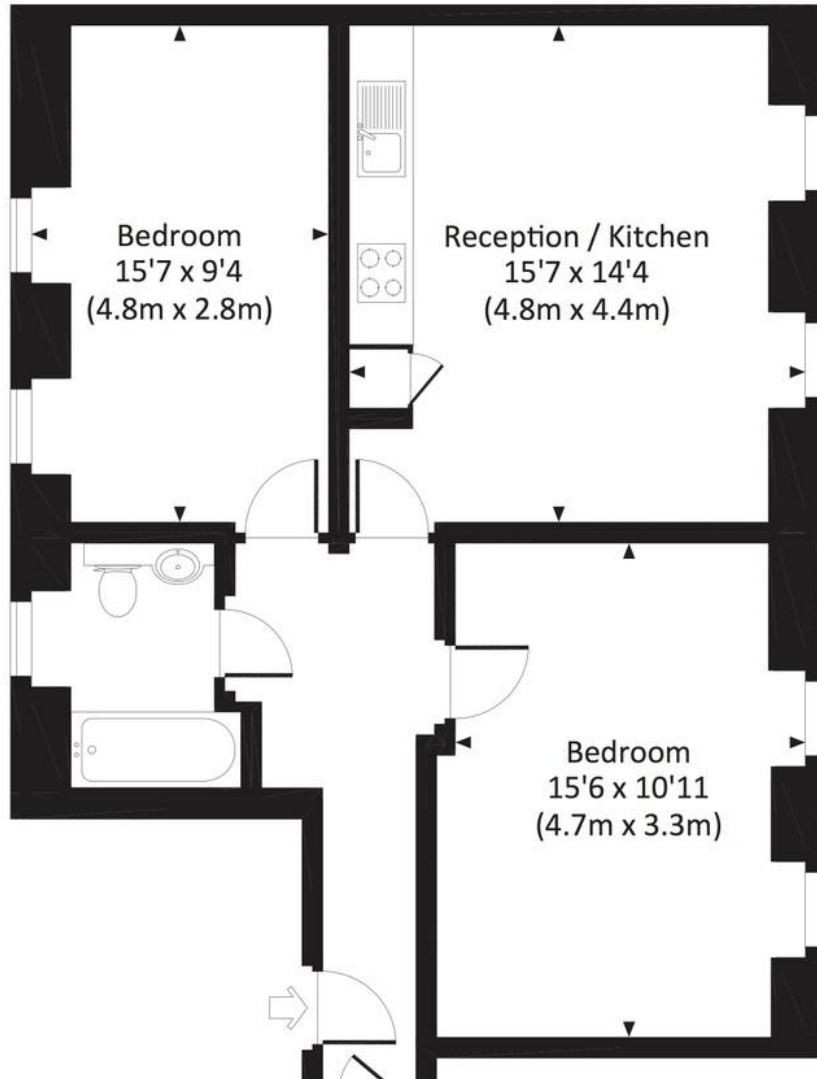
Property Description

%full_description_title[b,br,#0a3646]_dim[i]%





NEW ROAD, E1
 Approx. gross internal area
 674 Sq Ft. / 62.6 Sq M.



Viewings

By Appointment only

Council Tax Band

Band D

Local Authority

Tower Hamlets London Borough Council

Energy Efficiency Rating		Current	Potential
<i>Very energy efficient - lower running costs</i>			
(92-100)	A		
(81-91)	B		
(69-80)	C		80
(55-68)	D	57	
(39-54)	E		

Registered Office

Suite C, 36-40 Copperfield Road, London,
 E3 4RR /08050057

Find us on

mydeposits.co.uk



rightmove
 find your happy

Zoopla.co.uk **PrimeLocation**



www.netlettings.com
management@netlettings.com
 020 8981 5551

Agents Note: Whilst every care has been taken to prepare these particulars, they are for guidance purposes only. All measurements are approximate and for general guidance purposes only and whilst every care has been taken to ensure their accuracy, they should not be relied upon and potential tenants are advised to recheck the measurements.