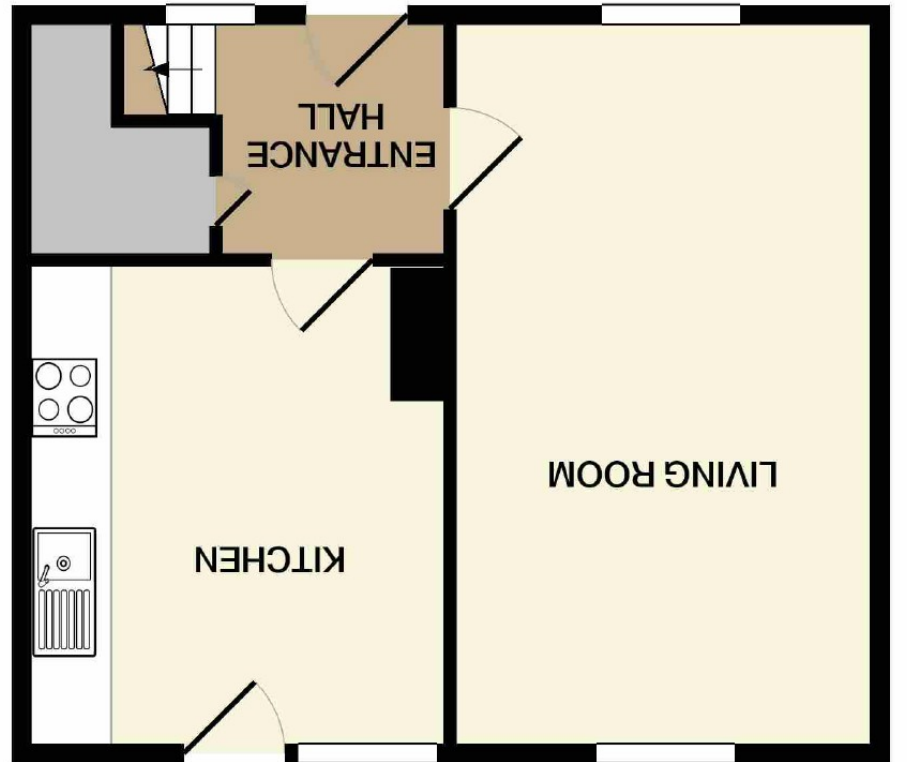


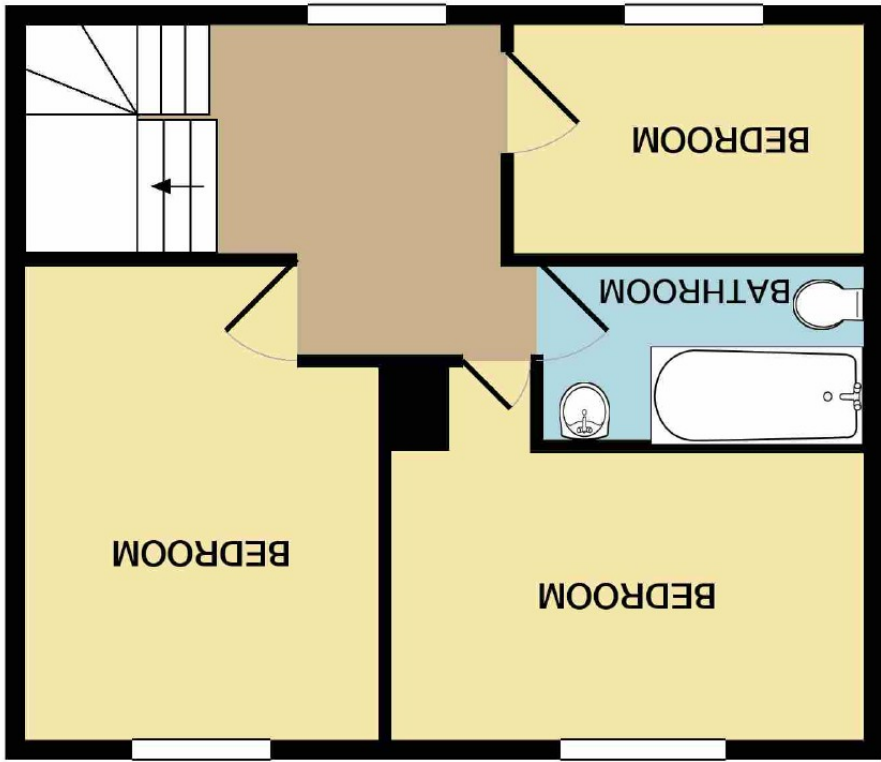
These particulars are believed to be accurate but they are not guaranteed and do not form a contract. Neither Jordan Fishwick nor the vendor or lessor accept any responsibility in respect of these particulars, which are not intended to be statements or representations of fact and any intending purchaser or lessee must satisfy himself by inspection or otherwise as to the correctness of each of the statements contained in these particulars. Any floorplans on this brochure are for illustrative purposes only and are not necessarily to scale.

Measurements are approximate. Not to scale. Illustrative purposes only  
Made with Metropix ©2021

GROUND FLOOR



1ST FLOOR





**Delamere Road, HANDFORTH  
SK9 3QA**

**£1,100 Per calendar month**



### The Property

WILMSLOW - UNFURNISHED AVAILABLE NOW Having been recently refurbished, this delightful home has been transformed into a quite splendid and highly distinguished home of considerable merit. The interior design has been redecorated in neutral tones with new carpets. Enjoying many characteristics such as stylish flooring, Vaillant combination boiler, elegant decoration and a re fitted kitchen and stylish bathroom. In brief outline:- Reception Hall, dual aspect living room and a re-fitted breakfast kitchen. To the first floor are three good size bedrooms and a stylish family bathroom. Externally, the house is set back behind a driveway providing off road parking. Gated access to the side leads to the rear garden, mainly laid to lawn with timber panel fencing to the

boundaries and a useful patio area. Contact Wilmslow 01625 536300 VIEWING ESSENTIAL £1100.00pcm

### Directions

- BEAUTIFULLY REFURBISHED FAMILY HOME
- THREE BEDROOMS
- MODERN RE-FITTED BREAKFAST KITCHEN
- STYLISH NEW BATHROOM
- PRIVATE REAR GARDEN
- DRIVEWAY PROVIDING OFF ROAD PARKING
- VAILLANT COMBINATION BOILER
- DUAL ASPECT 18'3 LIVING ROOM

**Postcode - SK9 3QA**

**EPC Rating - D**

**Floor Area - sq ft**

**Local Authority -**

**Council Tax - Band**

