

19 Powis Road

Brighton BN1 3HJ

Asking Price Of £215,000

- DOUBLE BEDROOM
- WHITE BATHROOM SUITE
- OPEN PLAN KITCHEN/LIVING ROOM
- NO ONWARD CHAIN
- SPLIT LEVEL
- CENTRAL LOCATION
- SHARE OF FREEHOLD
- PRESENTED IN EXCELLENT ORDER

Forming the top floor of the terrace property being presented in excellent order throughout with a delightful open plan kitchen/living room and white bathroom suite. The one double bedroom accommodation is neutrally decorated throughout with the flat benefiting from a share in the freehold.

No Onward Chain.

Situated in this desirable and central location within a few minutes walk of Brighton City centre offering an abundance of shopping facilities, eateries and cafes. The seafront and mainline station are both within easy reach.

The accommodation with approximate room measurements comprises;

SPLIT LEVEL ENTRANCE

Fitted cupboard, velux window, radiator.

KITCHEN/LIVING ROOM

Incorporating stainless steel sink unit with drainer and mixer tap, adjacent laminate worksurface with cupboards and drawer under, inset four ring hob, stainless steel extractor fan, electric oven, integrated fridge/freezer, plumbing for washing machine, tiled splashback. Heater and window.

BEDROOM 1

Fitted wardrobe, UPVC double glazed window, radiator, eaves storage cupboard.

BATHROOM

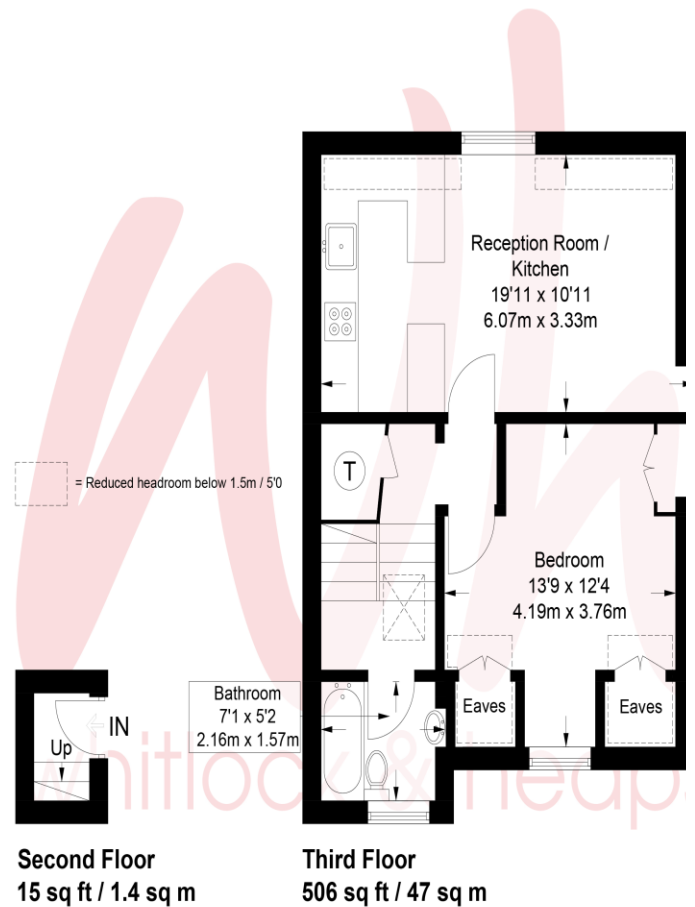
White suite comprising panelled bath with electric shower over, pedestal wash hand basin, low level w.c., heated ladder style towel rail, tiled walls.

OUTGOINGS

SHARE OF FREEHOLD

LEASE 999 years from 2016

MAINTENANCE £600 per half year



Portslade Branch

48 Boundary Road, Portslade BN3 4EF
portslade@whitlockandheaps.co.uk
01273 422706

Hove Branch

65 Sackville Road, Hove BN3 3WE
hove@whitlockandheaps.co.uk
01273 778577



Disclaimer: Whitlock & Heaps have produced these particulars in good faith and they are set out as a general guide. Accuracy is not guaranteed, nor do they form part of any contract. If there is any particular aspect of these details which you require any confirmation, please do contact us, especially if contemplating a long journey. All measurements are approximate. Fixtures and fittings, other than those mentioned above, to be agreed with the seller. Any services, systems or appliances at the property have not been tested.