

HADLEIGH  
RESIDENTIAL



## UPPER PARK ROAD, NW3

£2900 PCM

WELL PRESENTED TWO BEDROOM APARTMENT | SECOND FLOOR OF A PERIOD PROPERTY | 697 SQ. FT. | WOODEN FLOORS THROUGHOUT | 24' RECEPTION ROOM | MODERN OPEN PLAN KITCHEN | BATHROOM WITH BATH AND WALK IN SHOWER CUBICLE

For clarification, we wish to inform prospective tenants that we have prepared these particulars as a general guide. We have not carried out a detailed survey, nor tested the services, appliances and specific fittings. Room sizes should not be relied upon for carpets and furnishings. If there are any important matters which are likely to affect your decision, please contact us before viewing the property.

**HADLEIGH RESIDENTIAL**  
19 BELSIZE GROVE, LONDON, NW3 4TX  
**020 7722 9799**

PROPERTY@HADLEIGH.CO.UK | WWW.HADLEIGH.CO.UK

## DESCRIPTION

A well presented two bedroom apartment occupying the second floor of this period building in a very sought after position in the heart of Belsize Park. The property offers modern interiors with wooden floors throughout and comprises of a generously proportioned reception room with modern open plan kitchen, master bedroom with floor to ceiling fitted wardrobes, a further double bedroom and fully tiled bathroom with bath and separate shower cubicle. The property is offered unfurnished and available from 31st May 2023.

Upper Park Road, NW3  
Approx. Gross Internal Area \*  
697 Ft<sup>2</sup> - 64.75 M<sup>2</sup>

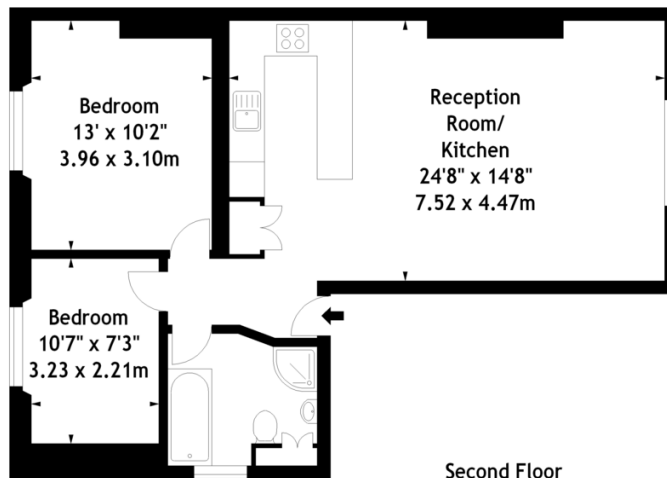


Illustration For Identification Purposes Only. Not To Scale

\* As Defined by RICS - Code of Measuring Practice  
© International Floorplans.  
Tel 0094 115 345958  
www.ifpl.lk

ENERGY EFFICIENCY RATING C.