



## Wraysbury

**£1,200 PCM**

A well presented ground floor Maisonette. The accommodation comprises: one double bedroom, spacious lounge, newly fitted kitchen, bathroom and double glazing. Outside the property benefits from a garden and on street parking. Within walking distance of Wraysbury Primary School, Village Centre and Wraysbury railway station serving the Windsor and Waterloo line. Comprehensive shopping centres at Windsor and Staines are both within a four/six mile drive. M25/M4/M3 Motorways are also within easy reach, together with London Heathrow Airport. Available early March 2026. Energy rating: E



### **B.S. Bennett Estate Agents**

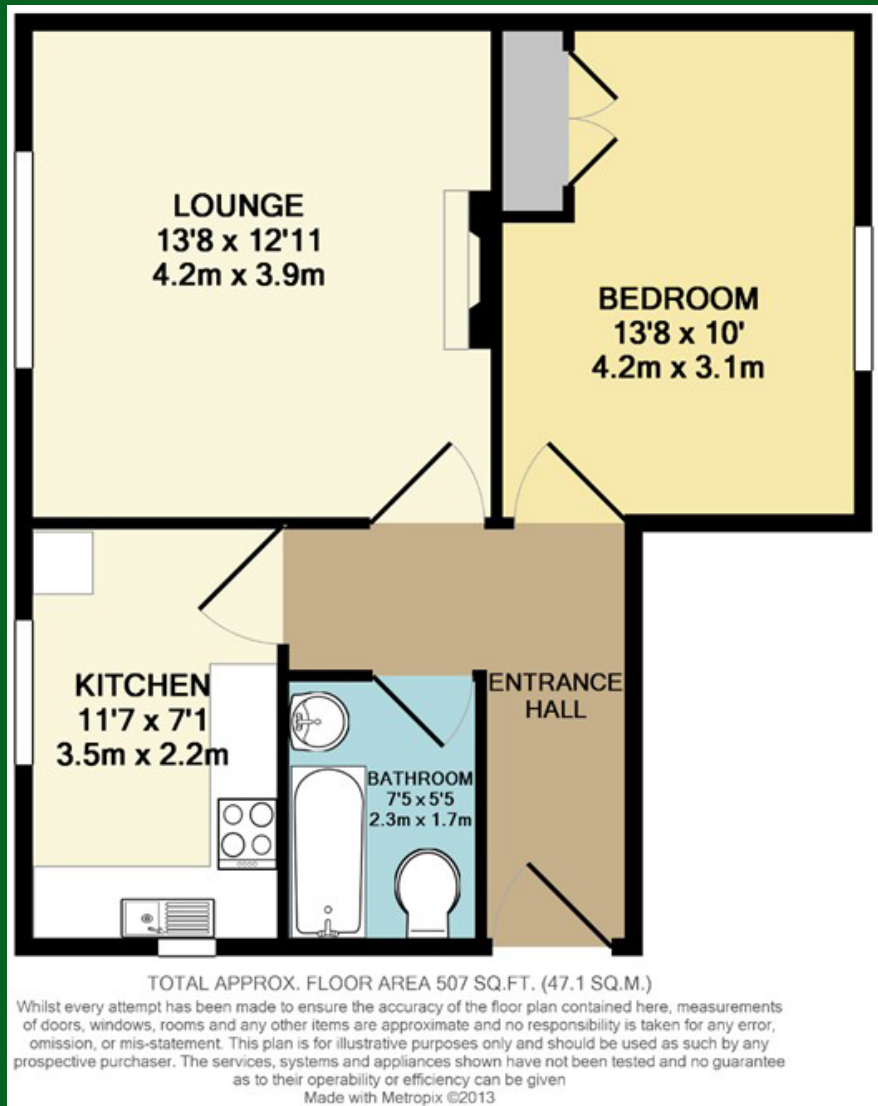
2 Staines Road, Wraysbury, Staines, Middlesex, TW19 5BS  
t: 01784 483839 e: [post@bsbennett.co.uk](mailto:post@bsbennett.co.uk)

**[bsbennett.co.uk](http://bsbennett.co.uk)**

**B. S. BENNETT**



**B. S. BENNETT**



**Deposit:**

5 weeks rent which is £1,380 for this rental. The deposit is used to cover any potential damages. The deposit will be protected by one of the approved schemes.

**Affordability:**

In order to pass the tenant references, the tenants must collectively earn a minimum of £36,000

**Services:**

Mains gas, electricity, water, main drainage.

Gas fired central heating.

Broadband Availability (according to ofcom.org.uk): Standard and Ultrafast Full Fibre.

For mobile voice and data coverage: <https://checker.ofcom.org.uk/en-gb/mobile-coverage>

**Local Authority**

Royal Borough of Windsor & Maidenhead. Town Hall, St. Ives Road, Maidenhead, Berkshire, SL6 1RF.

Telephone 01628798888.

**Council Tax**

Band: B

Payable 2025/26 £1,429.33



**B. S. BENNETT**