



- EPC Rating – C
- Council Tax Band - F
- Tenancy Length: 1 - 3 Years
- Deposit - £3461.53
- Holding Fee - £692.30

49 Temple Road, Kew, Richmond, Surrey, TW9 2EB

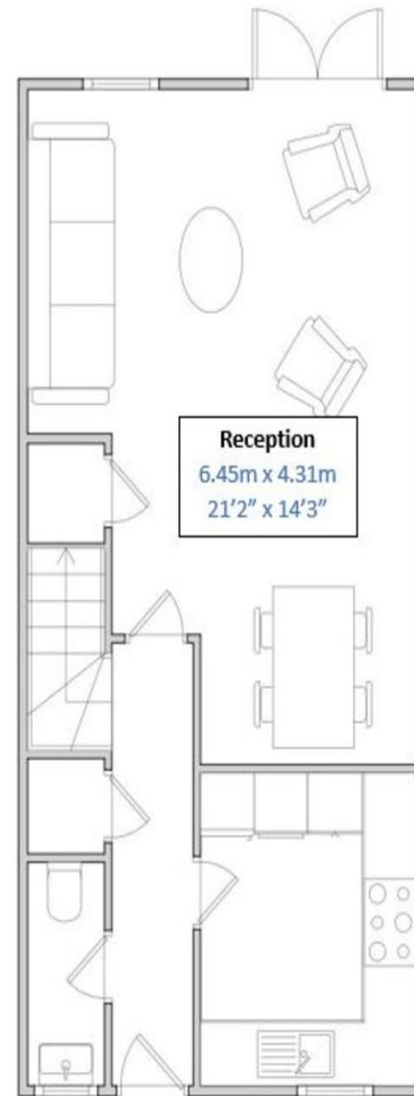
£3,000 pcm

End of terrace modern two storey Georgian style townhouse set in walled square overlooking communal gardens. 2 double wood floored bedrooms with tiled family shower room. Downstairs cloakroom. Reception room with marble floors and French doors opening to private patio garden. Modern kitchen. The property is within easy walk of Kew District Line Station.





Temple Road, Kew – TW9  
 Approx. gross internal floor area:  
 79.09m<sup>2</sup> / 851.3Ft<sup>2</sup>



16 Kew Green, Richmond,  
 Surrey, TW9 3BH

[www.priorymanagement.co.uk](http://www.priorymanagement.co.uk)  
 0208 940 4555  
[lettings@priorylm.com](mailto:lettings@priorylm.com)

Agents Note: Whilst every care has been taken to prepare these sales particulars, they are for guidance purposes only. All measurements are approximate and are for general guidance purposes only and whilst every care has been taken to ensure their accuracy, they should not be relied upon and potential buyers are advised to recheck the measurements