



CODA
- ESTATES -

OFFERS OVER

£172,500

51 LUNAN DRIVE, BISHOPBRIGGS G64 1AN

This family property provides spacious accommodation over two levels. Professionally extended to provide an additional master bedroom with ensuite shower facilities and french doors to raised decking, the property will appeal to an array of buyers. The south facing, enclosed rear garden is also the perfect entertaining space. EER - C

- *** Perfect Family Accommodation ***
- Professionally Extended
- Spacious Lounge
- 3 Bedrooms (master ensuite) & French Doors



FULL DESCRIPTION

CODA Estates are pleased to present this 3 bedroom, extended semi-detached property to the market. Located within a very desirable pocket, early viewing is essential.

Accommodation comprises, entrance porch, spacious lounge, kitchen with ample base and wall mounted units and door leading to the rear garden. On the ground floor you will also find the master bedroom which boast ensuite shower facilities and also attractive french doors leading to the rear raised decking.

Upstairs you will find 2 further double bedrooms both with built in storage and the house bathroom with shower over the bath.

The attic has also been floored providing a further useful space with adequate storage.

The property benefits from GCH, DG, driveway and a south facing rear garden.

Room Dimensions

Entrance Porch

Lounge - 5.55m x 3.90m

Kitchen - 3.90m x 2.55m

Master Bedroom - 5.50m x 2.80m

Ensuite - 2.25m x 1.30m

Bedroom 2 - 3.90m x 2.50m

Bedroom 3 - 3.90m x 2.55m

Bathroom - 1.90m x 1.90m

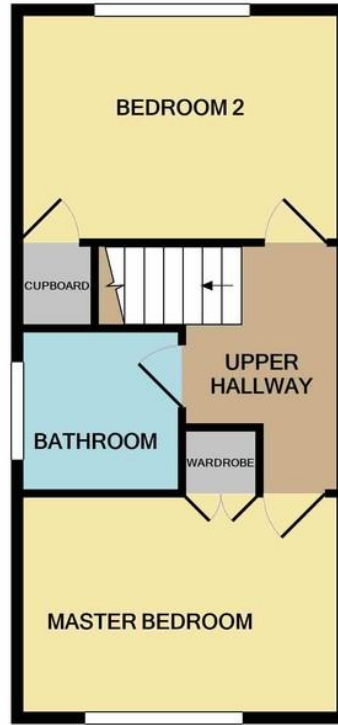
Floored Attic Space - 2.80m x 2.40m

Home Report Available on Request





GROUND FLOOR



1ST FLOOR



2ND FLOOR