

Barley Road

Cheltenham GL52 3ND

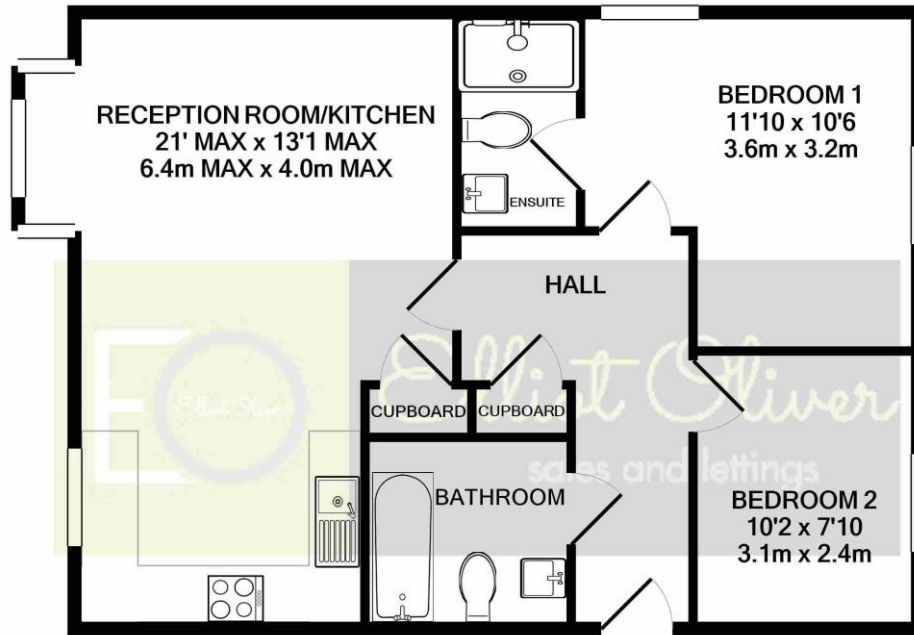


Barley Road, Cheltenham GL52 3ND

This is a well presented ground floor apartment situated on the Prestbury Chase development built by Bloor Homes. The property has some wonderful features offering an open plan living / kitchen / diner, the kitchen benefits from integrated appliances. There are two double bedrooms with an en suite to the main bedroom. The family bathroom benefits from a three piece suite. Outside offers an allocated parking space and communal gardens. A lovely ground floor apartment in a desirable location.







TOTAL APPROX. FLOOR AREA 648 SQ.FT. (60.2 SQ.M.)

Whilst every attempt has been made to ensure the accuracy of the floor plan contained here, measurements of doors, windows, rooms and any other items are approximate and no responsibility is taken for any error, omission, or mis-statement. This plan is for illustrative purposes only and should be used as such by any prospective purchaser. The services, systems and appliances shown have not been tested and no guarantee as to their operability or efficiency can be given

Made with Metropix ©2021



OFFICE

101 Promenade,
Cheltenham,
Gloucestershire, GL50
1NW
info@elliottoliver.co.uk