

31

James Street

Covent Garden | London WC2



| *tavistockbow*

31

**James
Street**

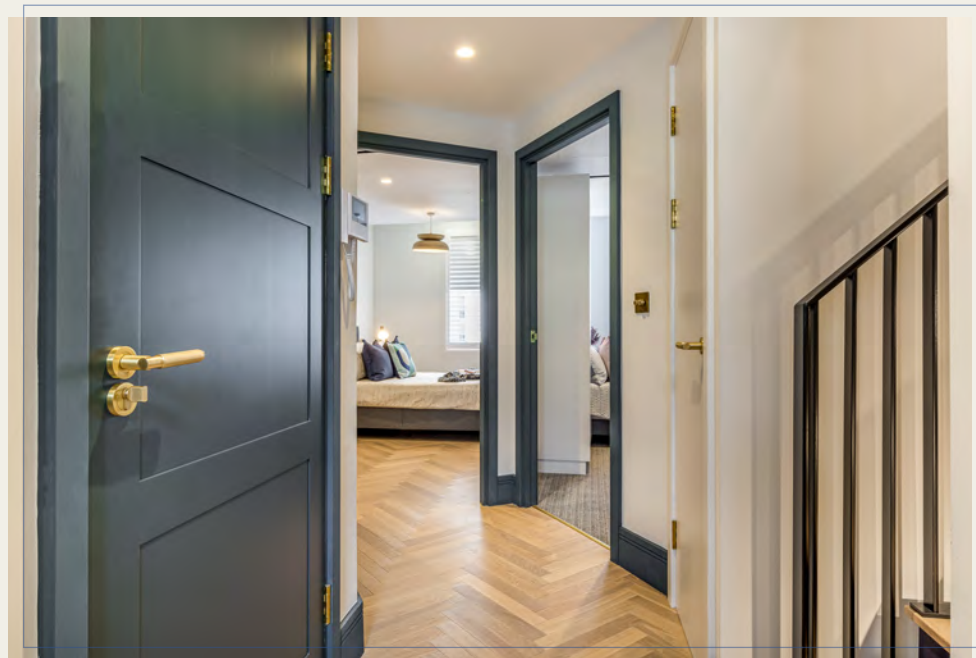
a boutique collection of beautifully refurbished 1 & 2 bed apartments in the heart of london's west end

Situated in a prominent position adjacent to Covent Garden's historic Inigo Jones designed Italianate Piazza, 31 James Street is handsome period building with a sought after address in the very heart of London's vibrant West End.

Three well proportioned and comprehensively refurbished lateral apartments designed by MABER architects & interior designers offer a rare opportunity to live a stone's throw from the Piazza, opposite the renowned Royal Opera House with truly world class shopping, dining and leisure opportunities literally on the doorstep.







The accommodation has been totally remodelled to maximise the space, providing three extremely well appointed and stylish apartments.

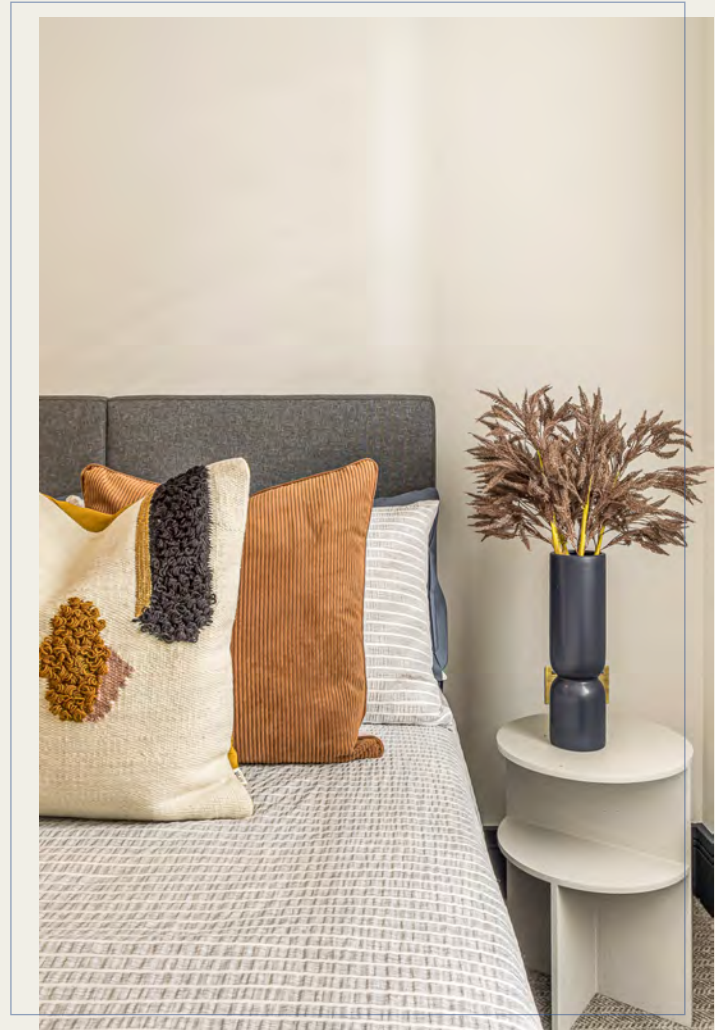






Each has been designed with a contemporary aesthetic to complement, and in places contrast sympathetically with the historic fabric of the building.







Throughout the main living spaces is a warm rich oak wood herringbone parquet floor, with a sanded oiled finish by HAVWOODS.

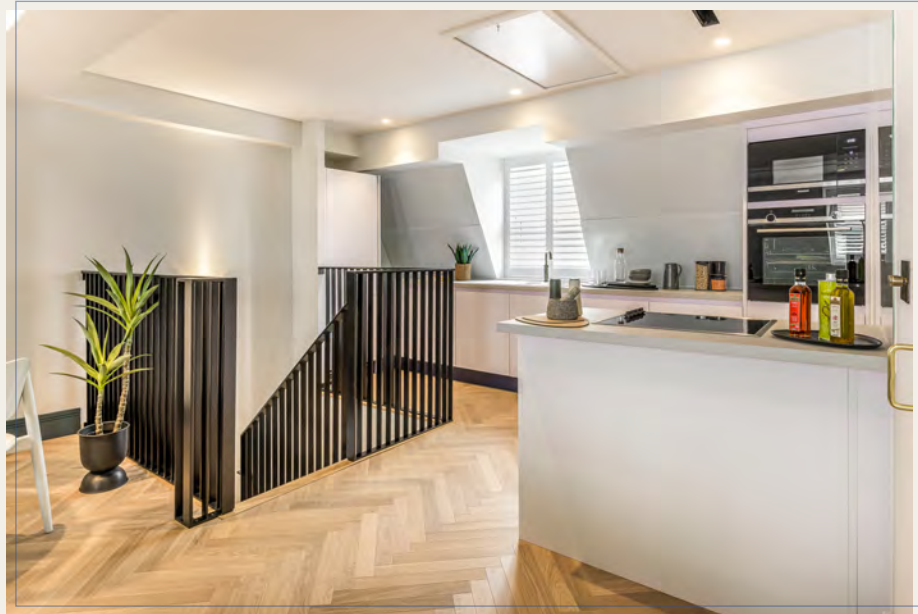






Windows have been fitted with attractive timber slatted plantation blinds by The London Shutter Company, finished in satin matt pure white and designed to either shut out daylight or filter it moodily into the apartment.





The contemporary aesthetic of furnishings, fittings and decor fit seamlessly into the historic fabric of this unique building.

Rich oak parquet flooring throughout is complimented by LED lighting, air conditioning, heating, appropriate technology and security measures designed for future proofed 21st century living in a modern city.



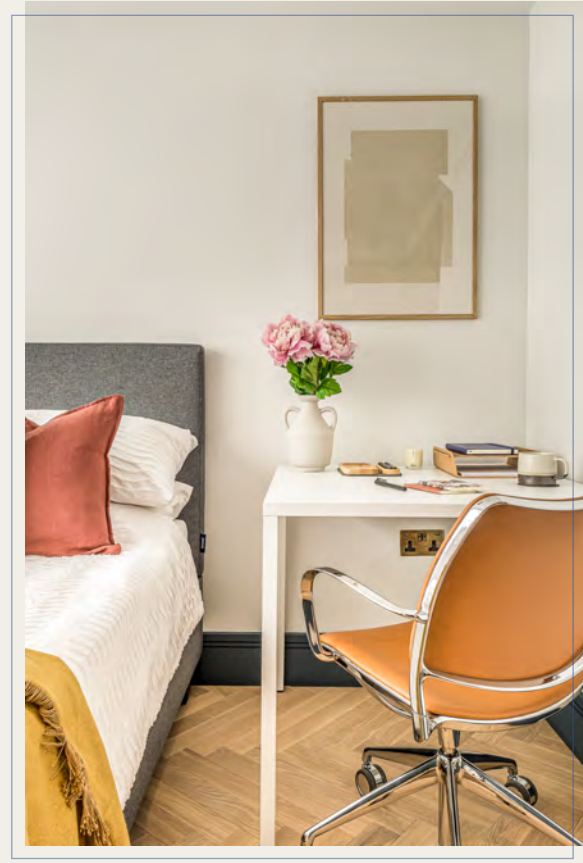




High quality SIEMENS appliances and a QUOOKER tap for instant hot or cold water, fit snugly into units that have work surfaces by FENIX NTM with an anti-fingerprint matt acrylic resin finish, which feels soft to the touch and is heat resistant.

The sink / drainer is by FRANKE who have developed an advanced synthetic material with a unique texture which is extremely durable with a stunning, granite-like appearance which is also heat resistant.







The figured oak grain complements the 'Dead Flat' matt Hague Blue paint finish by FARROW & BALL, which is applied to contemporary three panel hardwood doors, skirtings and architraves











Luxurious bath & shower rooms, with fittings, floor and wall tiles by PORCELANOSA complete the scene of a high quality city living environment.



Ironmongery levers by HARBRINE with knurled grips, hinges, power socket and light switches are in a heritage satin matt brass, again complementing the rich blue paintwork.







floorplans

Apt. 1 | first floor - 1 bed

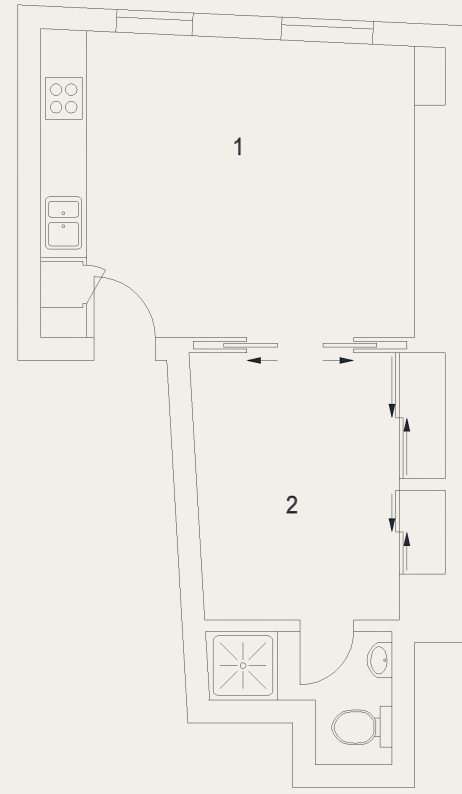
James Street, WC2

Approximate Gross Internal Area 36 sq m / 388 sq ft

First Floor

1 Kitchen /
Reception /
Dining Room
5.30 x 4.01M
17'5" x 13'2"

2 Bedroom
3.51 x 3.37M
11'6" x 11'1"



3D virtual tour



video tour



Floor Plan produced for Tavistock Bow by Mays Floorplans © . Tel 020 3397 4594
Illustration for identification purposes only, not to scale.



floorplans

Apt. 2 | second floor - 1 bed

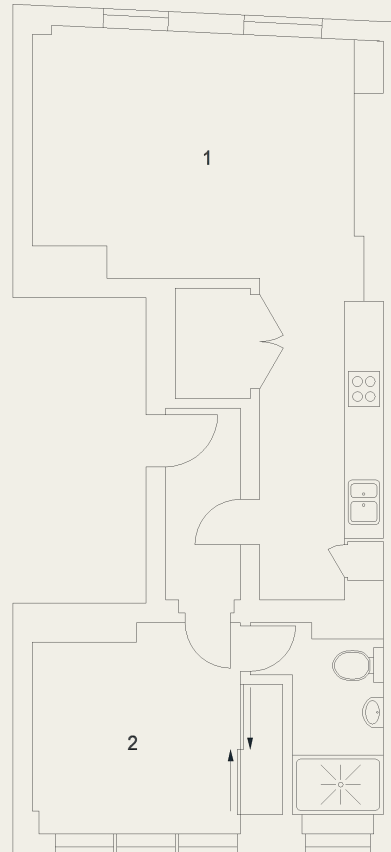
James Street, WC2

Approximate Gross Internal Area 55 sq m / 592 sq ft

Second Floor

1 Kitchen /
Reception /
Dining Room
8.68 x 5.41M
28'6" x 17'9"

2 Bedroom
3.24 x 3.17M
10'8" x 10'5"



3D virtual tour



video tour



Floor Plan produced for Tavistock Bow by Mays Floorplans © . Tel 020 3397 4594
Illustration for identification purposes only, not to scale.



floorplans

Apt. 3 | third floor - 2 bed

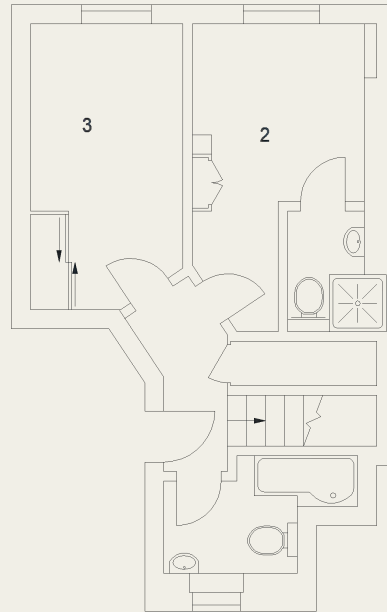
James Street, WC2
Approximate Gross Internal Area 79 sq m / 850 sq ft

 Under 1.5m head height



Third Floor

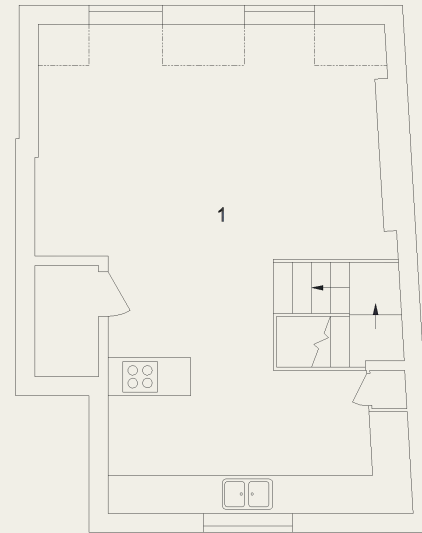
2 Bedroom 4.87 x 2.90M 16'0" x 9'6"	3 Bedroom 4.50 x 2.42M 14'9" x 7'11"
---	--



Third Floor

Fourth Floor

1 Kitchen /
Reception /
Dining Room
7.72 x 5.45M
25'4" x 17'11"



Fourth Floor

3D virtual tour



video tour



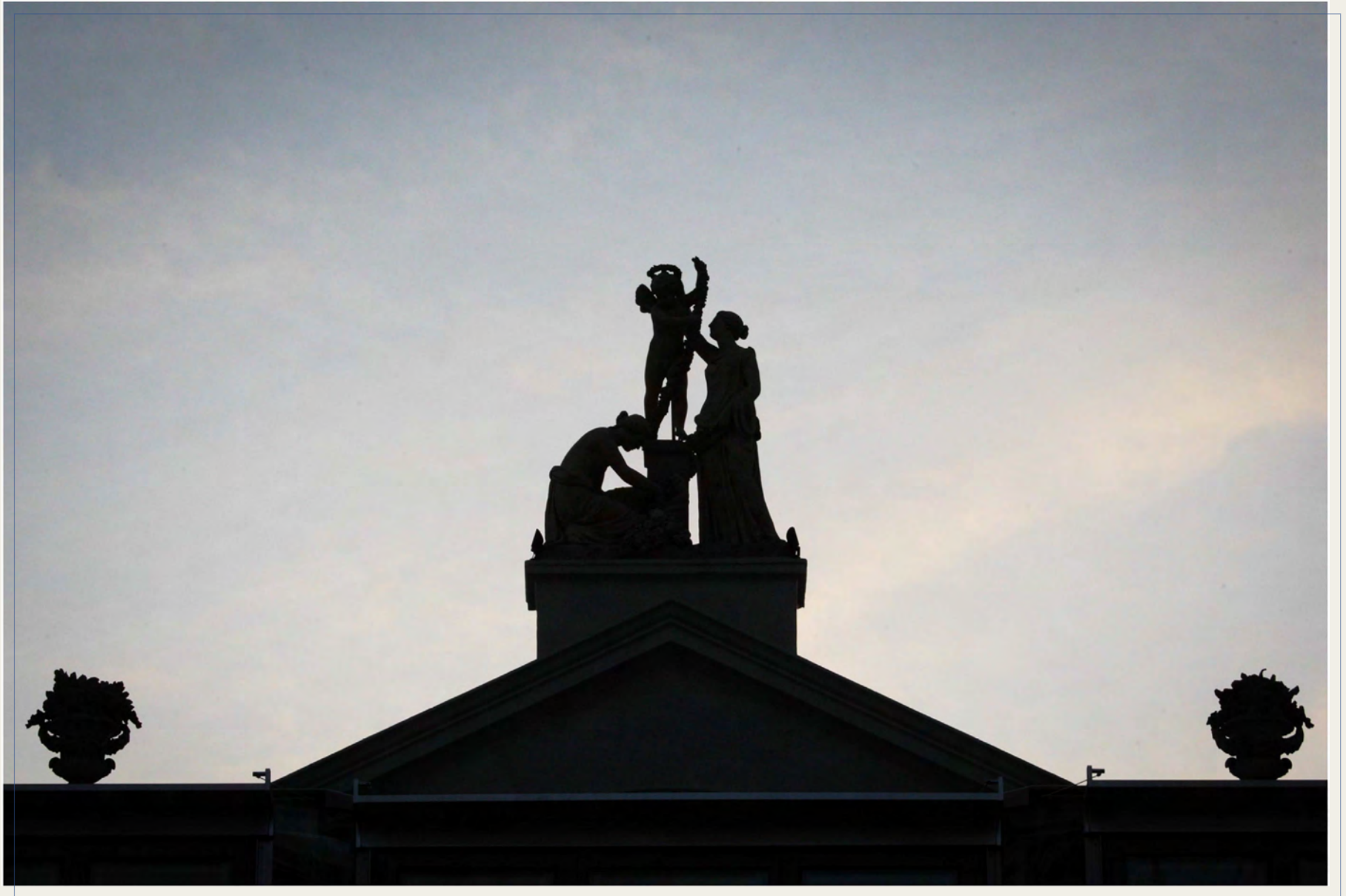
Floor Plan produced for Tavistock Bow by Mays Floorplans © . Tel 020 3397 4594
Illustration for identification purposes only, not to scale.



James Street leads directly from Covent Garden tube to the famed Italianate Piazza and is one of the West End's most sought after addresses, close to iconic London landmarks including The Royal Opera House and St. Paul's Church with its tranquil public gardens.

Being located in the very heart of London, residents are perfectly positioned to travel and explore on foot. The West End, Mayfair, the South Bank and River Thames and many of London's wonderful parks and open spaces are within easy reach, as well as the City of London.





tavistockbow

about us

Tavistock Bow is an independent residential agency based in Covent Garden.

We are niche, boutique, creative, knowledgeable, professional and approachable.

We love what we do and that's why we do it.



31 Long Acre, Covent Garden WC2E 9LA
020 7477 2177
hello@tavistockbow.com
tavistockbow.com