



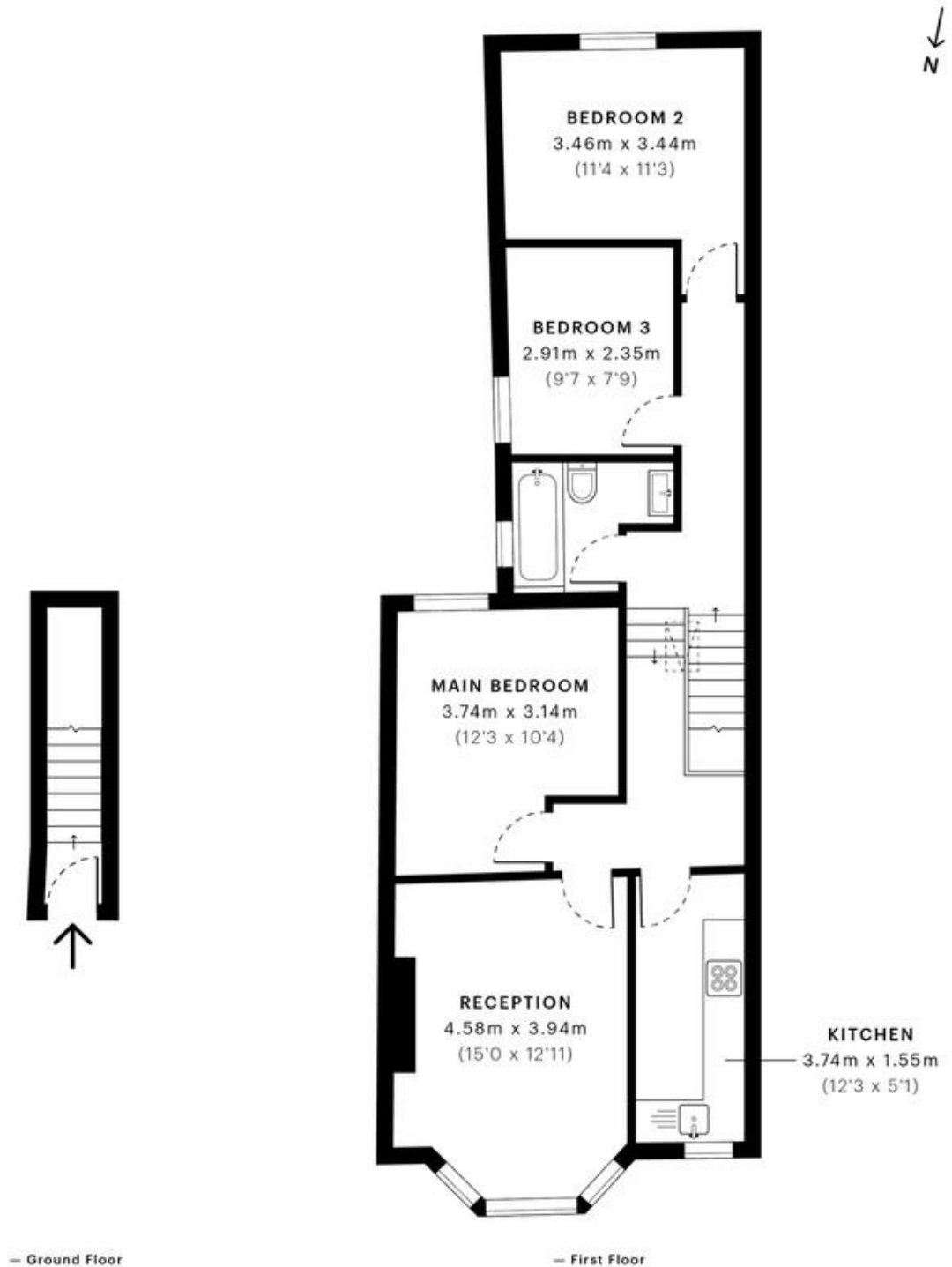
MILE



Ashburnham Road, London £2,700 pcm %tenure%

mile... are pleased to bring to the market this brand newly refurbished, modern three bedroom apartment.

- Brand Newly Refurbished
- Modern
- Three Double Bedrooms
- Separate Fully Fitted Kitchen
- Available Now
- Close to transport
- Near shops and high street



GROSS INTERNAL AREA (GIA)
The footprint of the property
67.49 sqm / 726.46 sqft

NET INTERNAL AREA (NIA)
Excludes walls and external features
Includes washrooms, restricted head height
62.46 sqm / 672.31 sqft

EXTERNAL STRUCTURAL FEATURES
Balconies, terraces, verandas etc.
0.00 sqm / 0.00 sqft

RESTRICTED HEAD HEIGHT
Limited use area under 1.5 m
0.00 sqm / 0.00 sqft