

Hellards



At home in Cheriton

Husky Sport, Cheriton

ALRESFORD, HAMPSHIRE, SO24 0QA

Offers in Excess of £600,000

- Commercial Site with Development Potential
- Planning Permission previously Granted – now Lapsed
- Favourable Position, with View Over Village Green
- Situated in the Heart of this Popular Village
- No Onward Chain

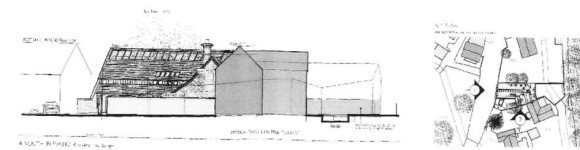
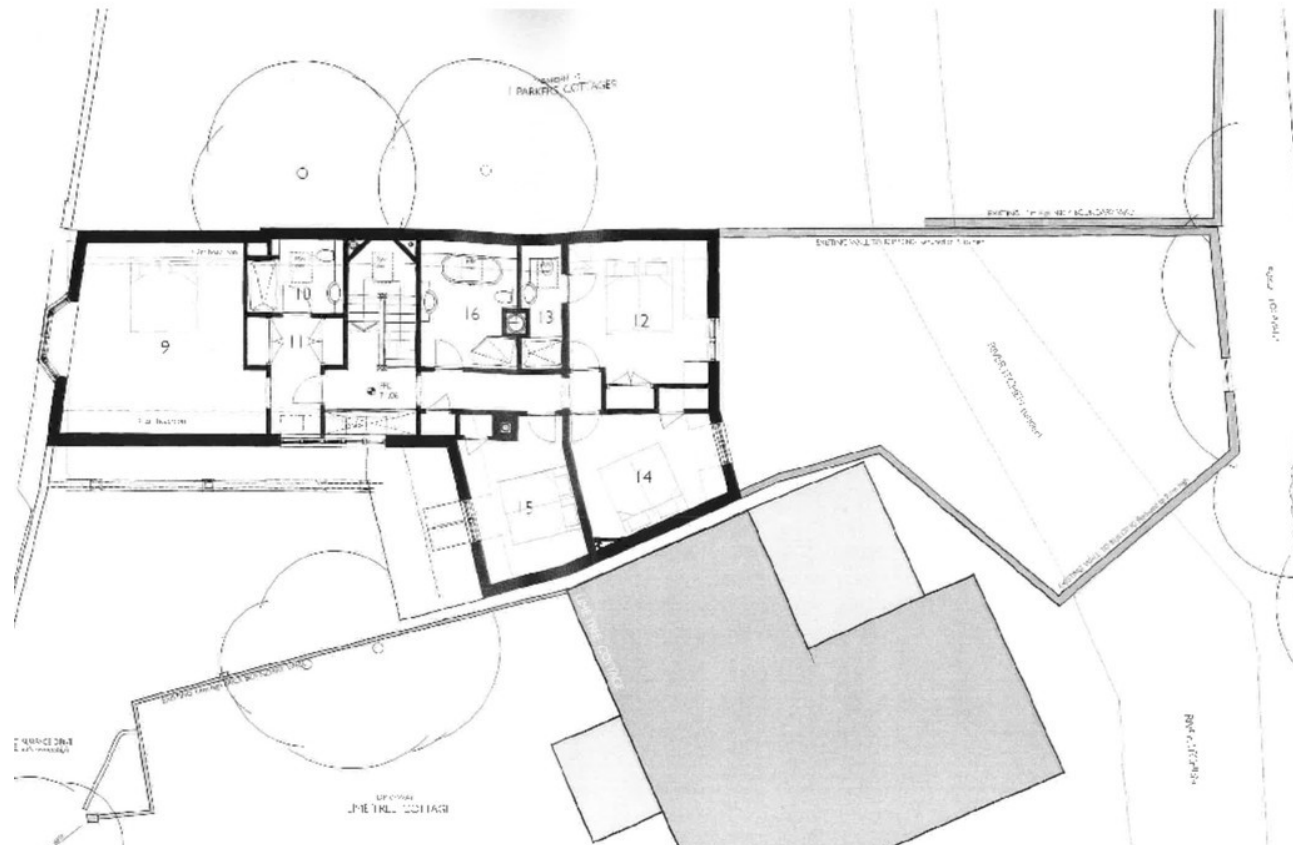
An opportunity to build a residential property in the heart of this popular village 2 ½ miles to the south of Alresford. The site has an attractive view across the Village Green and stream, and is located moments from the village shop/post office and local school.

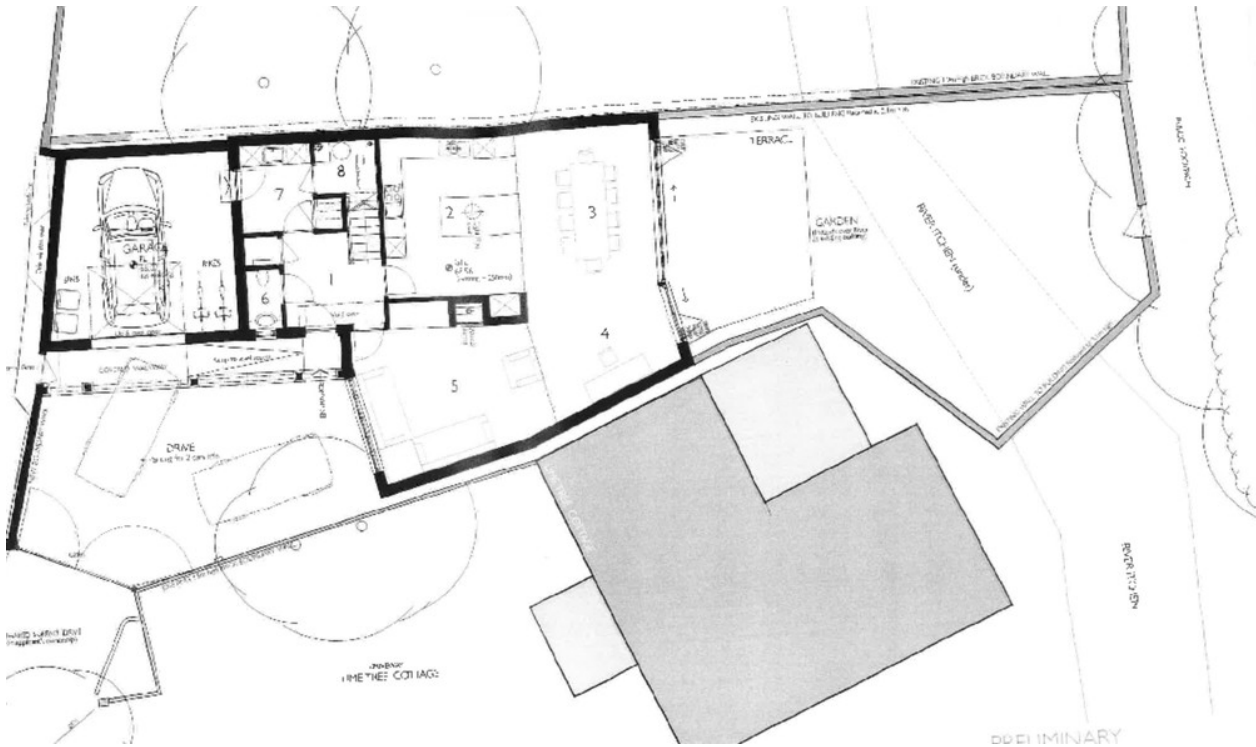
The current commercial property is a two storey commercial building with parking. The property is now vacant. The site previously had planning for a detached residential house with a garage, which was granted in 2016. The planning permission has now lapsed and will require a re-application. The site has existing foundations which, according to previous plans, could be used as the foundations for a new property.

Details can be found on the South Downs National Park website:

<https://planningpublicaccess.southdowns.gov.uk/online-applications/search.do?action=simple&searchTyp>

Planning Ref: SDNP/15/04448/FUL





SERVICES

The services are currently disconnected.

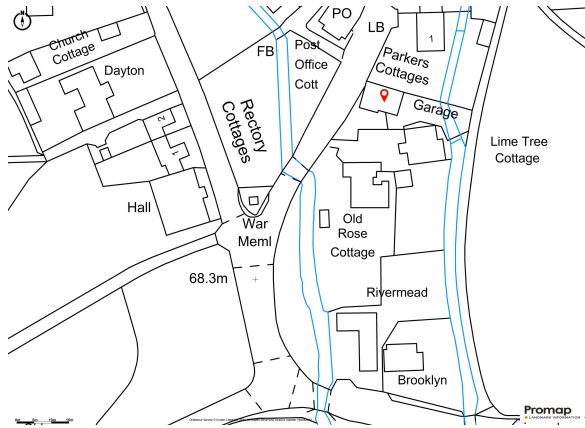
DIRECTIONS

From Alresford take the B3046 (Jacklyns Lane) signposted to Cheriton. Follow the road out of Alresford going over the A31 bypass, past the golf club and continue along into Cheriton. Continue on the main road through the village, before turning left opposite the village hall, Husky Sport will be found on the right hand side.

LOCATION

Cheriton is a very popular village located within The South Downs National Park. It has a well-known pub, an outstanding primary school, a local shop/post office, a church and its own civil war battlefield. It is considered to be a welcoming and inclusive village. Cheriton is surrounded by beautiful Hampshire countryside and is located 3-4 miles south of Alresford and 6 miles to the east of Winchester. There is access to London, Southampton and the Midlands via the local road network and there are rail links to London from Winchester and Petersfield





No. 11 Broad Street, Alresford, Hampshire, SO24 9AR

01962 736333

sales@hellards.co.uk | hellards.co.uk

IMPORTANT: we would like to inform prospective purchasers that these sales particulars have been prepared as a general guide only. A detailed survey has not been carried out, nor the services, appliances and fittings tested. Room sizes should not be relied upon for furnishing purposes and are approximate. If floor plans are included, they are for guidance only and illustration purposes only and may not be to scale. If there are any important matters likely to affect your decision to buy, please contact us before viewing the property.

