



- CHAIN FREE - Three Bedroom Semi-Detached House
- Spacious Lounge, Dining Room & Kitchen
- Three Piece Family Bathroom Suite
- Double Glazed & Gas Central Heating

[Links Road, Blackpool, FY1](#)

£149,950

UNDERGOING WORKS - SPACIOUS BAY FRONTED THREE BEDROOM SEMI-DETACHED HOUSE - LOUNGE - DINING ROOM - FITTED KITCHEN/DINER - DOUBLE GLAZING - GAS CENTRAL HEATING - BLOCK PAVED MULTI-CAR DRIVEWAY - - SOUTH FACING REAR GARDEN - NO CHAIN DELAY- CALL ROMAN JAMES ESTATES TO VIEW ON 01253 978888



## Property Description

### ENTRANCE HALL

Double glazed door to front, staircase leading to first floor and access to all ground floor rooms.

### LOUNGE

13' 6" x 11' 11" (4.12m x 3.64m) Double glazed bay window to front, radiator, feature fireplace with surround, opening through to dining room.

### DINING ROOM

14' 9" x 10' 8" (4.51m x 3.26m) Double glazed windows to rear, radiator & log burner with feature wooden surround.

### KITCHEN

18' 4" x 7' 6" (5.60m x 2.30m) Double glazed window and door to side, fitted range wall and base units with complimentary worktops, stainless steel sink and drainer unit with mixer tap, plumbing for washing machine, built in oven and induction hob, space for fridge freezer, plumbing for washing machine & dishwasher.

### WC

Window to the side, two piece suite comprising off low level WC and hand basin.

### LANDING

Double glazed window to the side, access to all first floor rooms.

### BEDROOM ONE

11' 3" x 16' 1" (3.44m x 4.91m) Double glazed bay window to front, radiator.

### BEDROOM TWO

14' 6" x 11' 1" (4.42m x 3.40m) Double glazed window to rear, radiator.





### BEDROOM THREE

7' 7" x 7' 1" (2.32m x 2.17m) Double glazed window to front, radiator.

### BATHROOM

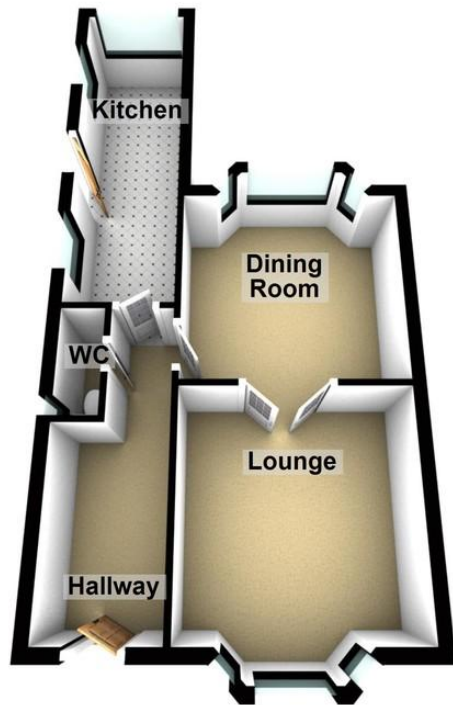
8' 10" x 7' 3" (2.70m x 2.22m) Double glazed window to side and rear, three piece fitted suite comprising; step-in shower cubicle, low-level WC and vanity wash hand basin & chrome heated towel rail. .

### GARDENS

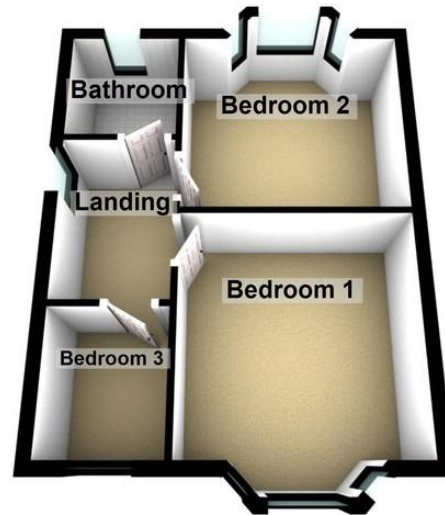
To the front of the property is a multi-car driveway providing off road parking. To the rear there is a private enclosed paved garden and shed.



### Ground Floor



### First Floor



29 Whitegate Drive, Blackpool,  
Lancashire, FY3 9AA

[www.romanjamesestates.co.uk](http://www.romanjamesestates.co.uk)  
01253 978888  
[info@romanjamesestates.co.uk](mailto:info@romanjamesestates.co.uk)

Agents Note: Whilst every care has been taken to prepare these sales particulars, they are for guidance purposes only. All measurements are approximate and are for general guidance purposes only and whilst every care has been taken to ensure their accuracy, they should not be relied upon and potential buyers are advised to recheck the measurements