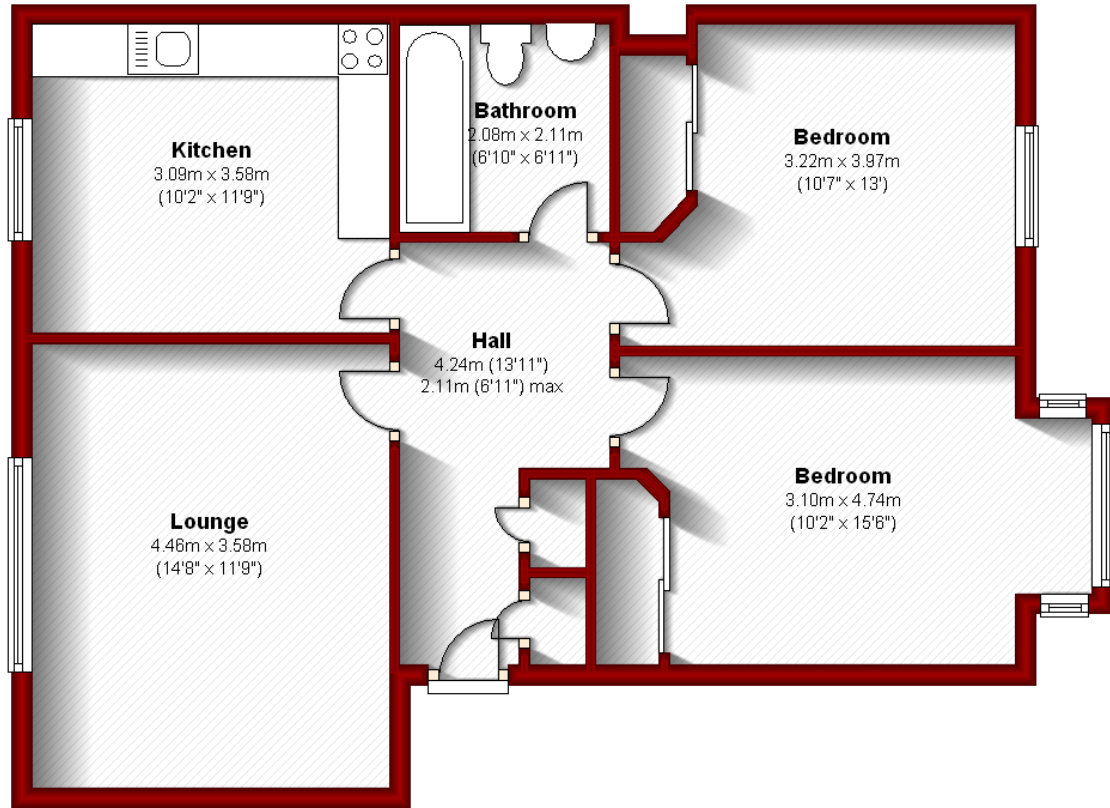


**106d Constitution Street  
Aberdeen**

**Ground Floor**

Approx. 65.8 sq. metres (708.1 sq. feet)



Total area: approx. 65.8 sq. metres (708.1 sq. feet)

**The above particulars are for guidance only, no liability for any errors or omissions will be accepted by Aberdeen Property Leasing Ltd.**