

Chantry Gate

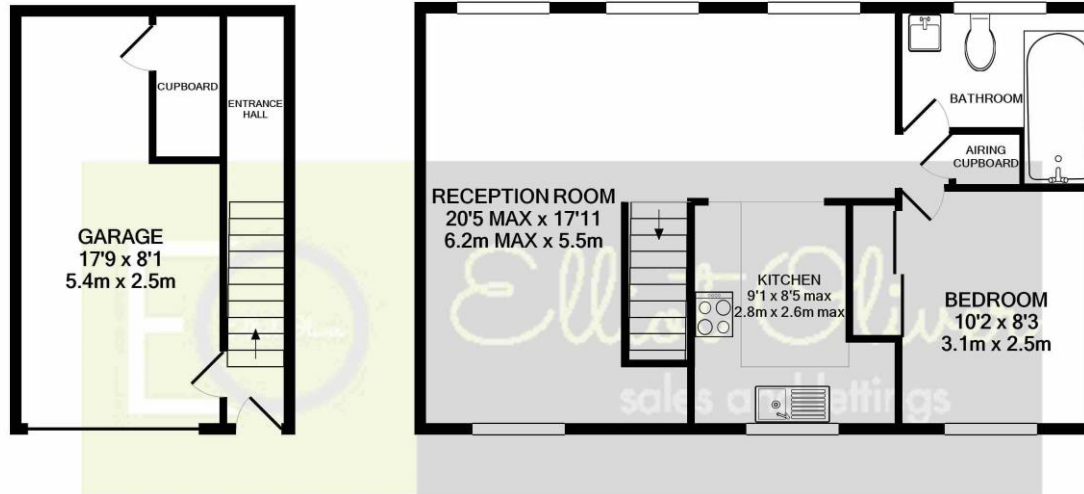
Cheltenham GL52 8UR



Chantry Gate, Bishops Cleeve GL52 8UR

The Axiom apartment development built by the renowned Cape Homes offers a private gated entrance, with various seated areas within the courtyard for residents use. This apartment offers a wonderful tasteful finish throughout and consists briefly of a kitchen/reception room with integrated appliances, enough room for a table and living items. The bedroom is a good sized double and offers a very handy wardrobe space. The stylish shower room consists of mainly a tiled finish. The property further benefits from modern electric radiators, the property has a communal area and lastly a handy bike shed.



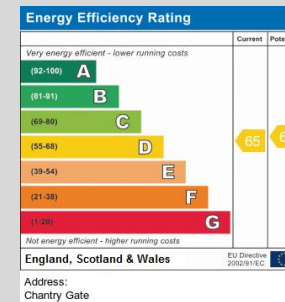


GROUND FLOOR
APPROX. FLOOR
AREA 208 SQ.FT.
(19.3 SQ.M.)

1ST FLOOR
APPROX. FLOOR
AREA 516 SQ.FT.
(47.9 SQ.M.)

TOTAL APPROX. FLOOR AREA 724 SQ.FT. (67.2 SQ.M.)

Whilst every attempt has been made to ensure the accuracy of the floor plan contained here, measurements of doors, windows, rooms and any other items are approximate and no responsibility is taken for any error, omission, or mis-statement. This plan is for illustrative purposes only and should be used as such by any prospective purchaser. The services, systems and appliances shown have not been tested and no guarantee as to their operability or efficiency can be given
Made with Metropix ©2021



OFFICE
101 Promenade,
Cheltenham,
Gloucestershire, GL50
1NW
info@elliotoliver.co.uk

Agents Note: Whilst every care has been taken to prepare these sales particulars, they are for guidance purposes only. All measurements are approximate and for general guidance purposes only and whilst every care has been taken to ensure their accuracy, they should not be relied upon and potential buyers are advised to recheck the measurements