



THE OXYGEN, 18 WESTERN GATEWAY, ROYAL VICTORIA DOCK, LONDON,  
E16 1BL



## WESTERN GATEWAY, ROYAL VICTORIA DOCK

£1,250 PCM



### PROPERTY SUMMARY

This bright and spacious one-bedroom flat situated on the first of a modern dockside development benefits from an open-plan design, with a balcony and a good-sized bedroom with sizeable built-in storage cupboards and has underfloor heating throughout.

This property has been well cared for & offers contemporary living with a private balcony. Both bathroom & kitchen are finished to a modern standard with quality fittings throughout.

Conveniently located close to local amenities and transport in the Royal Docks. Close to the cable cars and water sports centre. The shops, bars and restaurants in Canary Wharf are easily reached by transport.



### PROPERTY FEATURES

- + One-Bedroom Apartment
- + First Floor Location
- + 574 Sq. Ft. Internally
- + Private Balcony
- + Close to Royal Victoria DLR

### PROPERTY FEATURES

- + Available 21<sup>st</sup> August 2021
- + Underfloor Heating
- + Concierge Service
- + Council Tax: Band C
- + Maximum Occupancy Applies

# TO LET

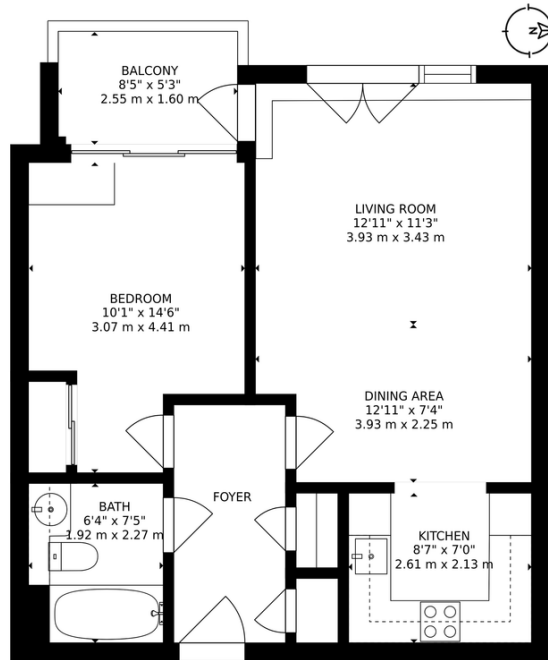
## WESTERN GATEWAY, ROYAL VICTORIA DOCK

£1,250 PCM



The Oxygen, E16  
1 bedroom apartment - 1st floor

MADISON BROOK  
INTERNATIONAL



Approx. Internal Area  
574 Sqft / 53 Sqm  
(excl. Balcony)



Illustration for identification purposes only.  
Measurements are approximate. Not to scale.

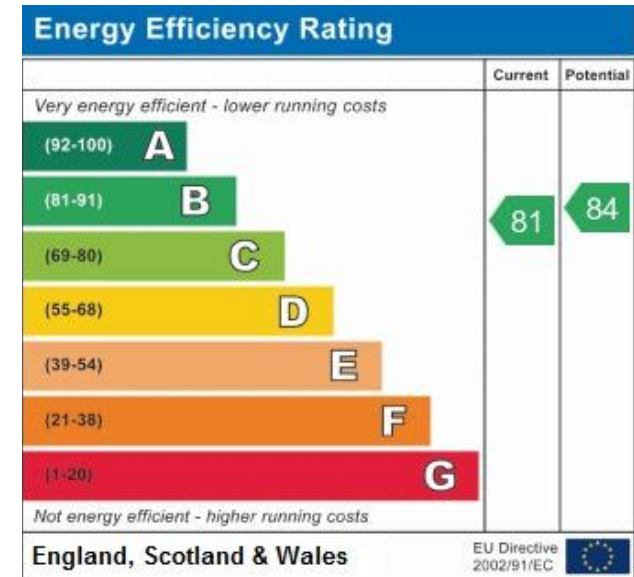
Unit B, 20 Western Gateway, Royal Victoria Dock, London, E16 1BS

T: 020 3946 6000

E: docklands@madisonbrook.com

MADISONBROOK.COM

- + Ref: 11385
- + Availability: 21<sup>st</sup> August 2021
- + Bedrooms : 1
- + Bathrooms: 1
- + Reception Rooms: 1



MADISON BROOK  
INTERNATIONAL

f in Madison Brook International @MadisonBrookInt

