



- Modern Two Bedroom First Floor Apartment
- Open Plan Lounge & Kitchen With Balcony
- Three Piece Family Bathroom Suite
- Allocated Parking With Intercom Access

The Chives, Forest Gate, Blackpool, FY3

£129,950

STYLISH TWO BEDROOM FIRST FLOOR APARTMENT - SPACIOUS OPEN PLAN LOUNGE WITH BALCONY - MODERN FITTED KITCHEN - TWO DOUBLE BEDROOMS - THREE PIECE FAMILY BATHROOM - SECURE ALLOCATED PARKING WITH INTERCOM ACCESS - BRILLIANT LOCATION CLOSE TO STANLEY PARK AND AMENITIES - NO CHAIN DELAY - CALL ROMAN JAMES ESTATES TO VIEW ON 01253 978888



Property Description

COMMUNAL ENTRANCE

Answerphone security system, communal areas are fully carpeted.

HALL

Wooden floors, storage heater, built in storage cupboard.

LOUNGE

14' 9" x 10' 11" (4.52m x 3.35m) Double glazed bayed window to side, double glazed French door to south facing enclosed balcony, storage heater, wooden flooring . Open planned to:-

DINING/KITCHEN

9' 8" x 9' 4" (2.95m x 2.87m) Fitted with a matching range of base and eye level units with worktop space over and drawers, stainless steel sink unit with single drainer and chrome mixer tap, part tiled walls, integrated stainless steel electric hob unit and oven with extractor hood over, plumbed for automatic washing machine.

BEDROOM ONE

12' 2" x 9' 10" (3.73m x 3.00m) Double glazed window to front, storage heater, wooden flooring.

BEDROOM TWO

8' 11" x 8' 2" (2.74m x 2.49m) Double glazed window to front, storage heater, wooden flooring.

BATHROOM

Fitted with a white three piece suite comprising panelled bath with shower over, pedestal wash hand basin and low-level WC, tiled surround, tiled flooring, heated towel rail and extractor fan.

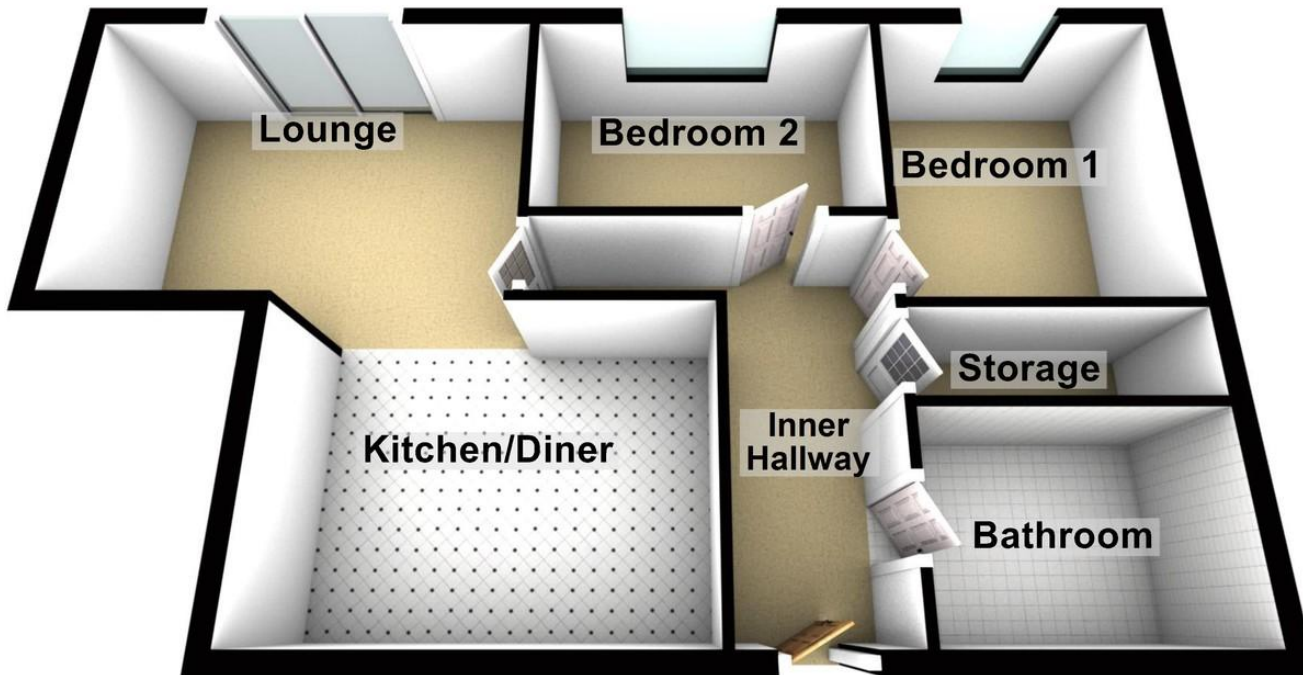
EXTERNAL

Allocated parking via a gated entrance.





Ground Floor



29 Whitegate Drive, Blackpool,
Lancashire, FY3 9AA

www.romanjamesestates.co.uk
01253 978888
info@romanjamesestates.co.uk

Agents Note: Whilst every care has been taken to prepare these sales particulars, they are for guidance purposes only. All measurements are approximate and are for general guidance purposes only and whilst every care has been taken to ensure their accuracy, they should not be relied upon and potential buyers are advised to recheck the measurements