

Head Office:
Dixon Kelley Estate Agents
1 Penn Court
Station Road, West Moors
Dorset. BH22 0JJ

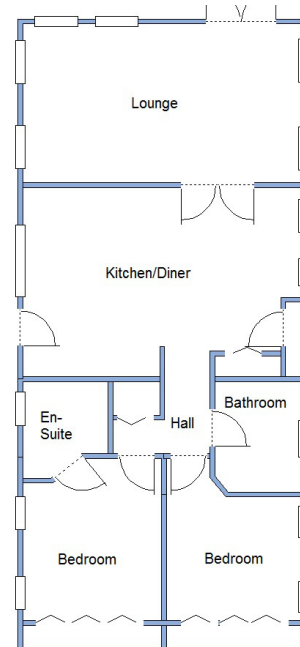
DORSET PARK HOMES

DRAFT

www.dorsetparkhomes.com

Telephone: 01202 877511

9 Bluebells Court, Organford Manor Country Park, Organford, Poole. BH16 6ES



This drawing has been prepared for diagrammatic purpose only. Not to scale.

2-Bedroom Park Home - approx 45' x 20'

Accommodation & approximate room dimensions:

- Omar 'Ikon' 2016
- Hall: Linen cupboard.
- Kitchen/Diner: approx 18'9" x 13'2" max. Range of floor and wall cupboards. Built-in oven, microwave & hob with cooker hood. Integrated dishwasher, washing machine & fridge/freezer. Boiler cupboard. Vaulted ceiling with sky-light windows.
- Lounge: approx 18'9" x 11'. Feature fireplace. Vaulted ceiling with LED spot lights. Double doors to LARGE 20' DECK with field views.
- Bedroom 1: approx 11' x 9'2" Plus fitted wardrobes.
- Luxury En-Suite Shower Room.
- Bedroom 2: approx 9'2" x 8'5" Plus fitted wardrobes
- Luxury Bathroom with double ended bath.
- Gas Central Heating (system untested)
- PVCu Double-Glazing
- Garden laid to patio & LARGE DECK. Metal Shed
- Parking on Plot
- Age Restriction 45+ Pets Considered
- Beautifully maintained, gated Residential Park with dog walking area. Semi-rural location near to Poole & Wareham.

Price: £295,000

VIEWING STRICTLY BY APPOINTMENT WITH THE VENDOR'S AGENT Dorset Park Homes 01202 877511

IMPORTANT NOTE: These particulars are believed to be correct but their accuracy is not guaranteed. They do not form part of any contract. Nothing in these particulars shall be deemed to be a statement that the property is in good structural condition or otherwise, nor that any of the services, appliances, equipment or facilities are in good working order or have been tested. Purchasers should satisfy themselves on such matters prior to purchase. Ref.W04293

Luxury Modern Home



**Pitch Fee: approx £59.03 per week including Water & Sewerage
Subject to Annual Review
Council Tax Band: 'A' Tenure: 1983 Mobile Homes Act Agreement**

The recommended specialist in Park Home sales
Partner: Simon Dixon

