



- Perfect For First Time Buyers, Three Bedroom End Terrace
- Open Plan Lounge, Kitchen & Dining Area
- Three Piece Family Bathroom Suite
- Enclosed Rear Garden With Decking

9 Robinson Road, Blackpool, FY1 5FG

£135,000

SUPER STYLISH THREE BEDROOM END TERRACE PROPERTY - BEAUTIFULLY PRESENTED - SPACIOUS OPEN PLAN LOUNGE & KITCHEN/DINER - FAMILY BATHROOM SUITE - THREE DOUBLE BEDROOMS - GREAT SIZED ENCLOSED REAR GARDEN - DOUBLE GLAZING - GAS CENTRAL HEATING - CALL ROMAN JAMES ESTATES TO VIEW.



Property Description

HALLWAY

Double glazed window and door to front, radiator, storage cupboard, staircase leading to first floor.

LOUNGE/KITCHEN/DINER

30' 2" x 14' 5" (9.21m x 4.40m) Measured in two areas (Lounge 5.16m x 4.40m) Kitchen (2.85m x 2.22m) Brilliantly spacious living area fitted with a matching base and eye level units with worktop space over and drawers, 1+1/2 bowl stainless steel sink unit with single drainer and mixer tap, plumbing for washing machine, space for fridge/freezer, built-in electric oven, built-in four ring gas hob with extractor hood over, double glazed window to front, radiator, open plan through to dining area, leading on to lounge area which has double glazed French doors to rear garden.

LANDING

Fitted carpets, built in storage cupboard and access to all first floor rooms.

BEDROOM ONE

14' 6" x 9' 11" (4.43m x 3.04m) Two double glazed windows to front, radiator & fitted carpet.

BEDROOM TWO

14' 7" x 7' 9" (4.47m x 2.37m) Currently used as a dressing room, double glazed window to rear, radiator & fitted carpet.

BEDROOM THREE

11' 10" x 6' 8" (3.63m x 2.04m) Double glazed windows to rear, radiator & fitted carpet.

BATHROOM

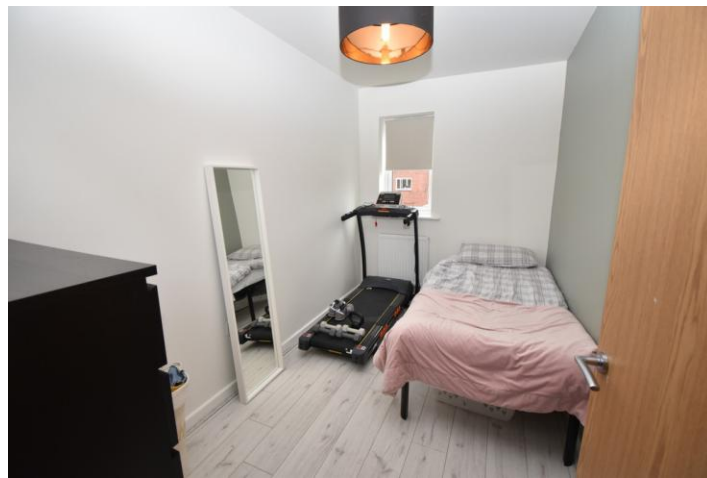
7' 5" x 5' 7" (2.28m x 1.71m) Fitted with a modern three piece suite comprising panelled bath with shower over, pedestal wash hand basin and low-level WC, tiled surround, heated towel rail, vinyl flooring.



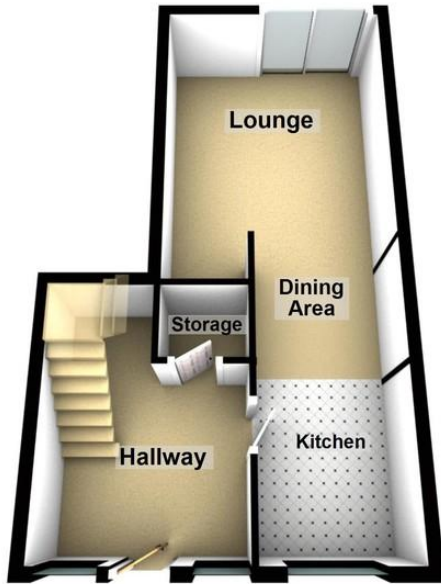


GARDENS

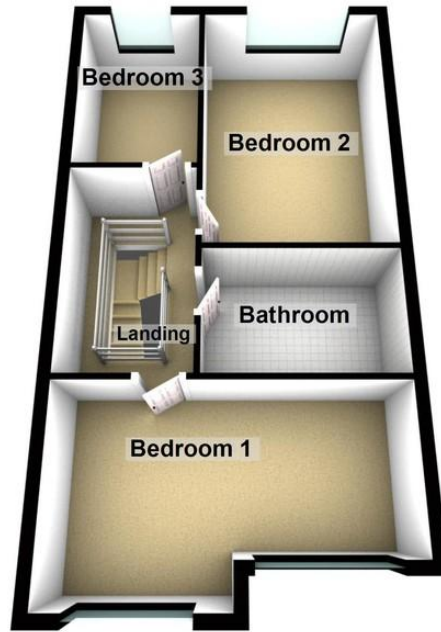
The rear garden leads perfectly off the lounge, a decked area surrounds a lawned space. There is also access to the rear via gated access to the side.



Ground Floor



First Floor



%epcGraph_c_1_334%

29 Whitegate Drive, Blackpool,
Lancashire, FY3 9AA

www.romanjamesestates.co.uk
01253 978888
info@romanjamesestates.co.uk

Agents Note: Whilst every care has been taken to prepare these sales particulars, they are for guidance purposes only. All measurements are approximate and are for general guidance purposes only and whilst every care has been taken to ensure their accuracy, they should not be relied upon and potential buyers are advised to recheck the measurements