



Wilderness Road | Mannamead | Plymouth | PL3 4RN

In Region Of £280,000

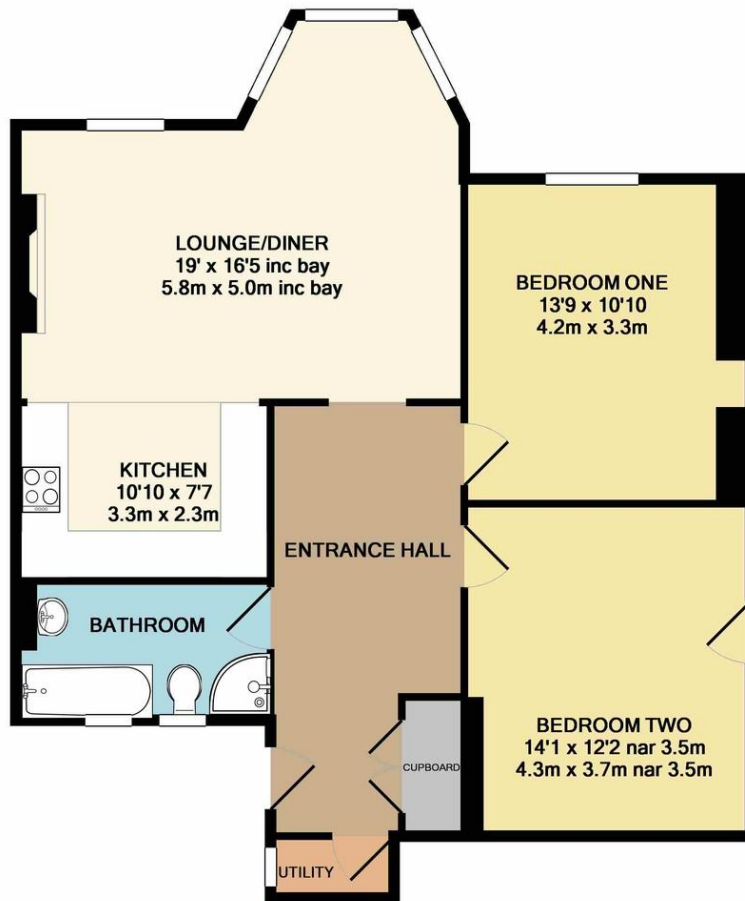
A large and palatial garden apartment situated within Mannamead.

This spacious self-contained maisonette, situated within a Victorian, former gentleman's residence has been re-modelled and re-furbished over recent years and now boasts a modern fitted kitchen and four piece bathroom suite.

Upon inspection you will find a large reception hall, generous open plan living room, kitchen with fitted appliances, utility room and two good sized double bedrooms. The outside benefits from a sunken garden to the rear and a seating area to the front.

The property is situated within close proximity to all facilities and within walking distance to Plymouth City Centre, The University and the train Station.

- Victorian Apartment
- Two Double Bedrooms
- Open Plan Living Room
- Modern Fitted Kitchen
- Four Piece Bathroom Suite
- Popular Location
- Close To Facilities

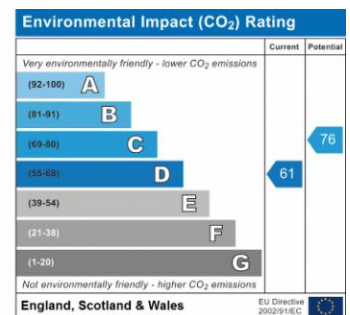
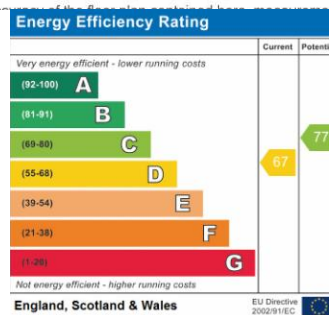


TOTAL APPROX. FLOOR AREA 888 SQ.FT. (82.5 SQ.M.)

Contact Details

48 Ebrington Street
Plymouth
Devon
PL4 9AD

www.athomelettings.com
info@athomeproperty.co.uk
01752 777070



Agents Note: Whilst every care has been taken to prepare these sales particulars, they are for guidance purposes only. All measurements are approximate are for general guidance purposes only and whilst every care has been taken to ensure their accuracy, they should not be relied upon and potential buyers are advised to recheck the measurements