



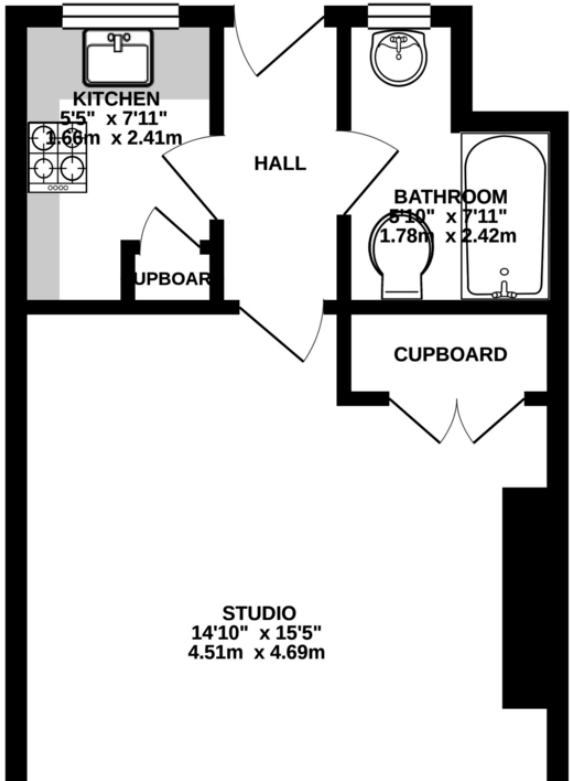
Station Grove
, Wembley, , HA0 4AN

Offers In Region Of
£250.000

Property Summary



GROUND FLOOR
330 sq.ft. (30.7 sq.m.) approx.



Energy Efficiency Rating		
	Current	Potential
Very energy efficient - lower running costs		
(92-100) A		
(81-91) B		87
(69-80) C		
(55-68) D	56	
(39-54) E		

- Ground Floor large studio
- open plan kitchen
- Separate Bathroom
- Separate kitchen
- Communal Garden
- Heart of Wembley
- Walking distance to Wembley Central station
- Close to Ealing Road
- Leasehold
- For viewings call us NOW

38 Court Parade
Wembley
Middlesex
HA0 3HS

www.propertyhubltd.com
sales@propertyhubltd.com
0208 459 3333

Agents Note: Whilst every care has been taken to prepare these particulars, they are for guidance purposes only. All measurements are approximate are for general guidance purposes only and whilst every care has been taken to ensure their accuracy, they should not be relied upon and potential buyers/tenants are advised to recheck the measurements