



Boniface Walk
, Harrow, , HA3 6PU

Auction Guide Price
£545.000

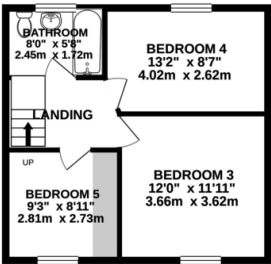
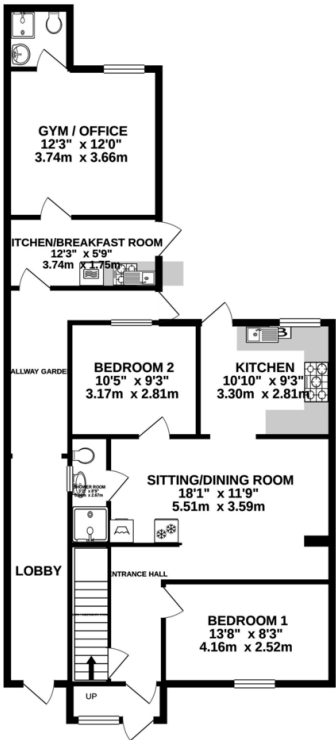
Property Summary



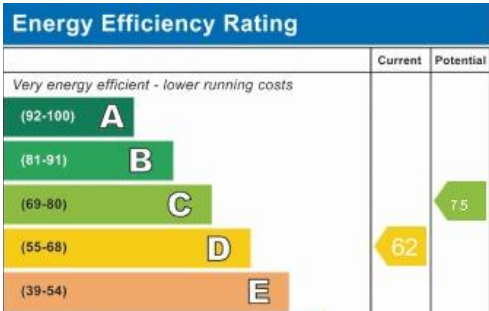
GROUND FLOOR
1067 sq.ft. (99.1 sq.m.) approx.



1ST FLOOR
434 sq.ft. (40.4 sq.m.) approx.



TOTAL FLOOR AREA : 1502 sq.ft. (139.5 sq.m.) approx.
Whilst every attempt has been made to ensure the accuracy of the floorplan contained herein, measurements of doors, windows, rooms and any other items are approximate and no responsibility is taken for any error, omission or mis-statement. This plan is for illustrative purposes only and should be used as such by any prospective purchaser. The services, systems and appliances shown have not been tested and no guarantee as to their operability or efficiency can be given.



- Semi detached house
- 5 / 6 bedrms
- Newly refurbished in some parts
- Ideal for investment
- Open plan kitchen
- Three bathrooms
- Wooden and carpet flooring
- local transports
- Well maintained garden
- Driveway

38 Court Parade
Wembley
Middlesex
HA0 3HS

www.propertyhubltd.com
sales@propertyhubltd.com
0208 459 3333

Agents Note: Whilst every care has been taken to prepare these particulars, they are for guidance purposes only. All measurements are approximate are for general guidance purposes only and whilst every care has been taken to ensure their accuracy, they should not be relied upon and potential buyers/tenants are advised to recheck the measurements