

Spacious 1 bedroom, 1st floor conversion apartment with 1 parking space, central Reigate.

Available 29th March 2024
HOLDING DEPOSIT £276.92
 Equivalent to 1 weeks rent. The deposit is required whilst reference/credit checks are being undertaken. This sum will be deducted from the first months rent. Should the tenancy not proceed to occupation the deposit is non-returnable.

DEPOSIT £1,384.62
 Equivalent to 5 weeks rent and returnable at the end of the tenancy providing there are no dilapidations or damages. This will be lodged with the Deposit Protection Scheme.

High ceilings, bay window, sash windows, gas central heating. Gas cooker, washing machine, fridge & Freezer.



Front elevation

Council tax band: C

EPC rating: C

Current 70 potential 77

£1,200 PCM

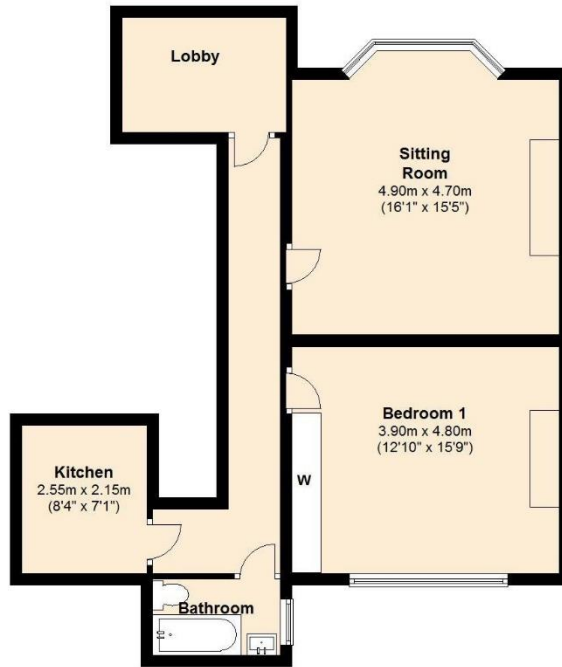


Flat2, 38 Warren Road, Reigate, Surrey, RH2 0BS



Additional costs:
Water rates, payable monthly in advance by Bank Standing Order. Council Tax and all other utility services will be the tenant(s) responsibility.

Terms of payment: cleared funds must be received by Lewis White 2 days prior to the tenancy. Payment by bankers draft, internet banking or cheque allowing for an additional 5 working days to clear



Total area: approx. 63.0 sq. metres (677.6 sq. feet)

Central Reigate location

Spacious and bright.

Available 29/03/24

Library pictures shown prior
to existing tenancy

