



# Oakwood Court

Bordon, Hampshire, GU35

Pemberton Rivendale (36x20)



0800 954 1288

[sales@sellmygroup.co.uk](mailto:sales@sellmygroup.co.uk)



# £250,000

*Hogmoor Road, Bordon, Hampshire, GU35*

The Pemberton Rivendale bungalow style park home has an open plan kitchen area with integrated appliances. The living room features a plush lounge suite, recessed electric fire and large bi-folding windows.

The master bedroom features Moroccan-style pendant lighting, wall mounted headboard, large divan bed and a walk-through wardrobe to the en-suite. A full-sized shower and white contemporary suite are found in the en-suite. The guest bedroom features twin beds and a wall mounted headboard. Finally, the master bathroom is spacious with a full-sized bath, mirrored cabinets and under sink storage.

The park is surrounded by stunning countryside in a beautiful corner of East Hampshire. While the setting is secluded and peaceful, you're also close to the hustle and bustle of larger towns such as Alton, Fareham, Haslemere, Guildford and the charming market town of Petersfield. The development is also just minutes away by car from Whitehill Forest shopping centre, the doctor's surgery and library are located.

- Brand new home
- Exceptionally High Specification
- Fully Fitted Kitchen
- Fully Furnished
- Gated and secure community
- Over 45's
- Pet-friendly
- RoyaleLife development
- Rural Location

2 x  2 x 

**100% Market Value Part  
Exchange with  
Quickmove Properties**

Home exchange example:

Value of your existing home....£300,000

Price of new park home.....£225,000

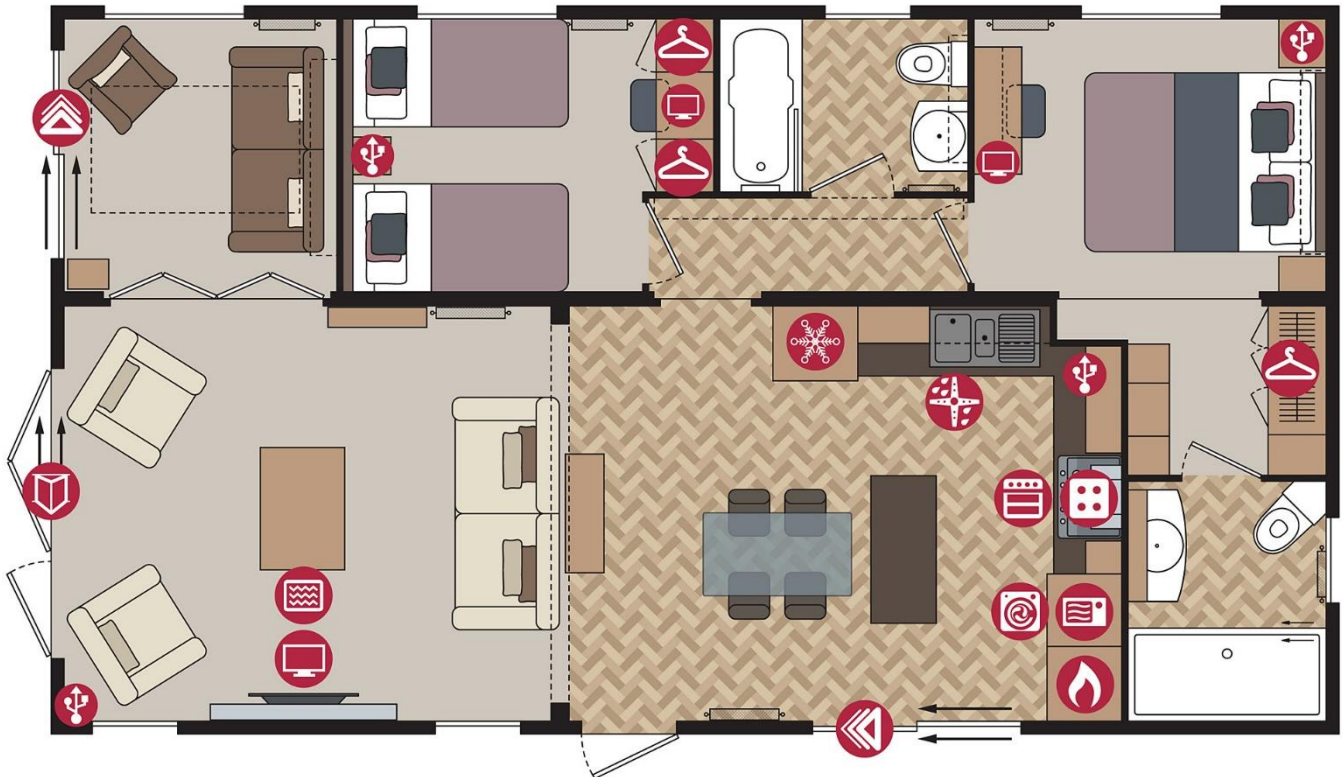
Cash for you to enjoy.....£75,000



Please note: Stock images have been used, the home on site may vary.

# Floor Plan

Rivendale Lodge 36ft x 22ft • 2 bedroom



## CONTACT DETAILS

0800 954 1288

[sales@sellmygroup.co.uk](mailto:sales@sellmygroup.co.uk)

