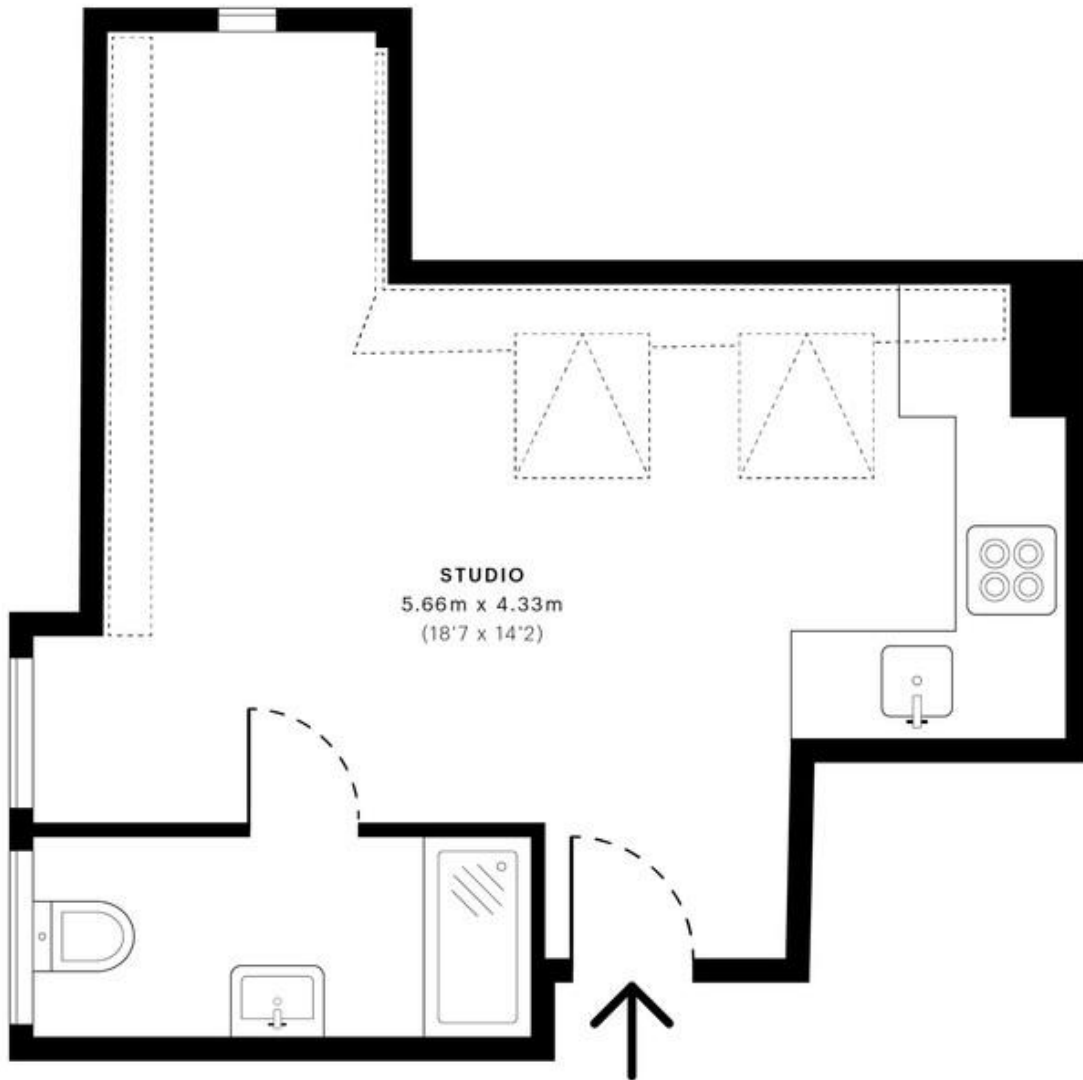




## The Drive, London £1,250 pcm

Mile are pleased to offer this studio to rent. The property has been BRAND NEWLY REFURBISHED, is modern and spacious and bright. Located in a highly sought after location in Golders Green, only 5 min walk to Brent Cross Station and 10 min walk to Golders Green Station. All Bills Included. Available 10th September! EPC RATING D

- BRAND NEWLY REFURBISHED
- MODERN
- Spacious
- Fully Self Contained
- Close to Brent Cross Station
- Close to Golders Green High Street
- Available 10th September!
- EPC RATING D
- ALL BILLS INCLUDED



— Second Floor

**GROSS INTERNAL AREA (GIA)**  
The footprint of the property  
21.55 sqm / 231.96 sqft

**NET INTERNAL AREA (NIA)**  
Excludes walls and external features  
Includes washrooms, restricted head height  
20.94 sqm / 225.40 sqft

**EXTERNAL STRUCTURAL FEATURES**  
Balconies, terraces, verandas etc.  
0.00 sqm / 0.00 sqft

**RESTRICTED HEAD HEIGHT**  
Limited use area under 1.5 m  
2.12 sqm / 22.82 sqft