

**TO LET**



## **Imperial Apartments, City Centre**

**2 Bedrooms, 2 Bathroom, Apartment**

**£1,400 pcm**





## Imperial Apartments, City Centre

Apartment,  
2 bedroom, 2 bathroom

£1,400 pcm

Date available: 29th December 2025

Deposit: £1,615.38

Unfurnished

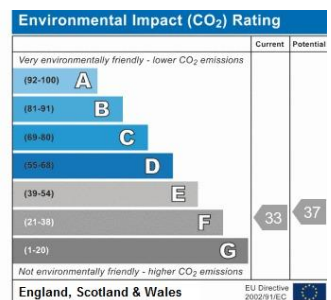
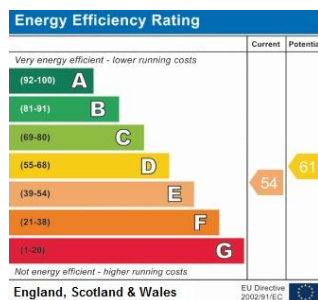
Council Tax band: E

- Two Bedroom Apartment
- Juliet Balconies
- Integrated White Goods
- Allocated Parking
- Grade II Listed Period Building
- High Ceilings
- Second Floor, Lift Access

**OVERVIEW** A two bedroom, second floor apartment located in a grade II listed building. Comprising entrance hallway, lounge/diner, kitchen, two double bedrooms, en-suite and main bathroom. The property benefits from high ceilings, a number of Juliet balconies, electric heating, allocated parking, lift access, on-site daytime concierge, integrated appliances and built-in storage.

**ENTRANCE HALLWAY** Flat painted ceiling, laminate flooring, airing cupboard, storage cupboard, wall mounted electric heater.

**KITCHEN** 8' 10" x 7' 9" (2.69m x 2.36m) High level flat ceiling, beige painted walls with white tiled splash back, light wood laminate flooring, side aspect window, range of light grey fitted units with grey mottled laminate





worktop and inset stainless steel sink and integrated appliances.

LOUNGE/DINER 26' 7" x 19' 2" (8.1m x 5.84m) Flat painted ceiling with ornate features, walls are painted neutral with wallpaper to the bottom half, dark wood laminate flooring, two side aspect french doors with Juliet balconies, feature fireplace, wall mounted electric heating, TV & telephone points.

MASTER BEDROOM 10' 0" x 18' 6" (3.05m x 5.64m) High level flat painted ceiling, cream painted walls with blue feature wall, beige fitted carpet, double french doors with Juliet balcony, wardrobe, wall mounted electric heater, en-suite bathroom.

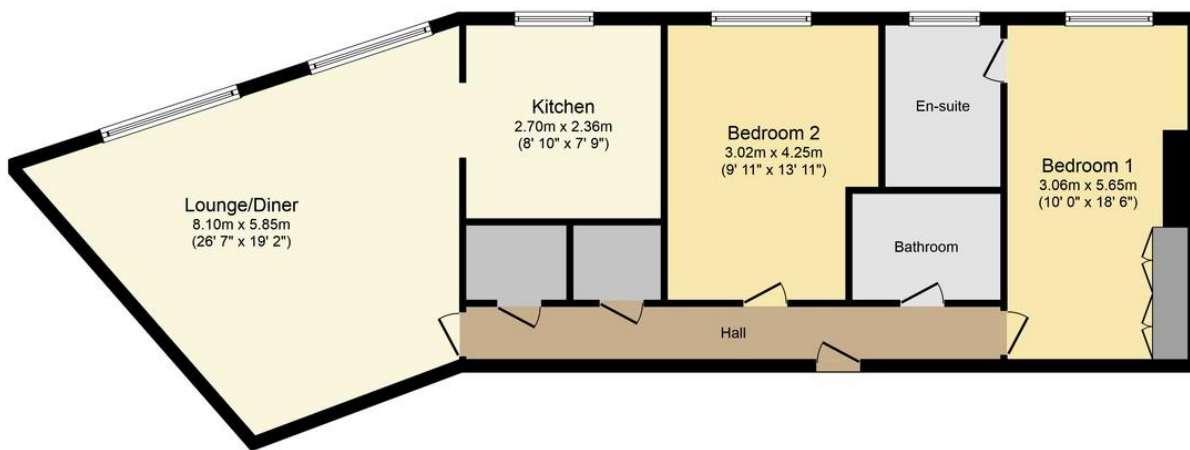
EN-SUITE Flat painted ceiling, yellow painted walls with tiling to lower level and shower, tile effect vinyl flooring, white low level w.c, which basin with dark wood vanity unit, large shower enclosure with wall mounted shower and riser rail, double french doors with Juliet balcony.

BEDROOM 2 9' 11" x 13' 11" (3.02m x 4.24m) High level painted ceiling, cream painted walls with light green feature wall, beige fitted carpet, double french doors with Juliet balcony, wall mounted electric heater.

BATHROOM Flat painted ceiling, white painted walls



with some tiling to lower level, tile effect vinyl flooring, white suite comprising low level w.c, wash basin with dark wood vanity unit and bath with dark wood side panel, mixer taps and shower head attachment.



Floor Plan

Total floor area 101.0 sq. m. (1,087 sq. ft.) approx.  
This plan is for illustration purposes only and may not be representative of the property.  
Plan created for Martin & Co.

Produced by www.keyagent.co.uk

**Martin & Co Southampton City** **02380 988881**  
46 London Road • Southampton • SO15 2AH  
T: 02380 988881 • E: southamptoncity@martinco.com <http://www.martinco.com>



**Accuracy:** References to the Tenure of a Property are based on information supplied by the Seller. The Agent has not had sight of the title documents. A Buyer is advised to obtain verification from their Solicitor. Items shown in photographs including but not limited to carpets, fixtures and fittings are not included unless specifically mentioned within the sales particulars. They may however be available by separate negotiation. Buyers must check the availability of any property and make an appointment to view before embarking on any journey to see a property. No person in the employment of the agent has any authority to make any representation about the property, and accordingly any information given is entirely without responsibility on the part of the agents, sellers(s) or lessors(s). Any property particulars are not an offer or contract, nor for part of one. **Sonic / Laser Tape:** Measurements taken using a sonic / laser tape measure may be subject to a small margin of error. **All Measurements:** All Measurements are Approximate. **Services Not tested:** The Agent has not tested any apparatus, equipment, fixtures and fittings or services and so cannot verify that they are in working order or fit for the purpose. A Buyer is advised to obtain verification from their Solicitor or Surveyor.