

Zura Drive

Cheltenham GL52 7SF



Zura Drive, Stoke Orchard, Cheltenham GL52 7SF

A beautifully presented four bedroom detached family home which is located in Stoke Orchard. The property is spread across three floors with ground floor comprises:- Entrance hall, a stunning open plan living / kitchen diner which offers integrated appliances and large windows allowing plenty of light, a family room and lastly a useful utility room and WC. The first floor leads to three double bedrooms and a family bathroom. The second bedroom features an en suite shower room and dressing room with built in wardrobes. The top floor houses the main suite which also benefits from an en suite and dressing room. The property further benefits from a well maintained and landscaped south westerly facing garden, a garage and off road parking.



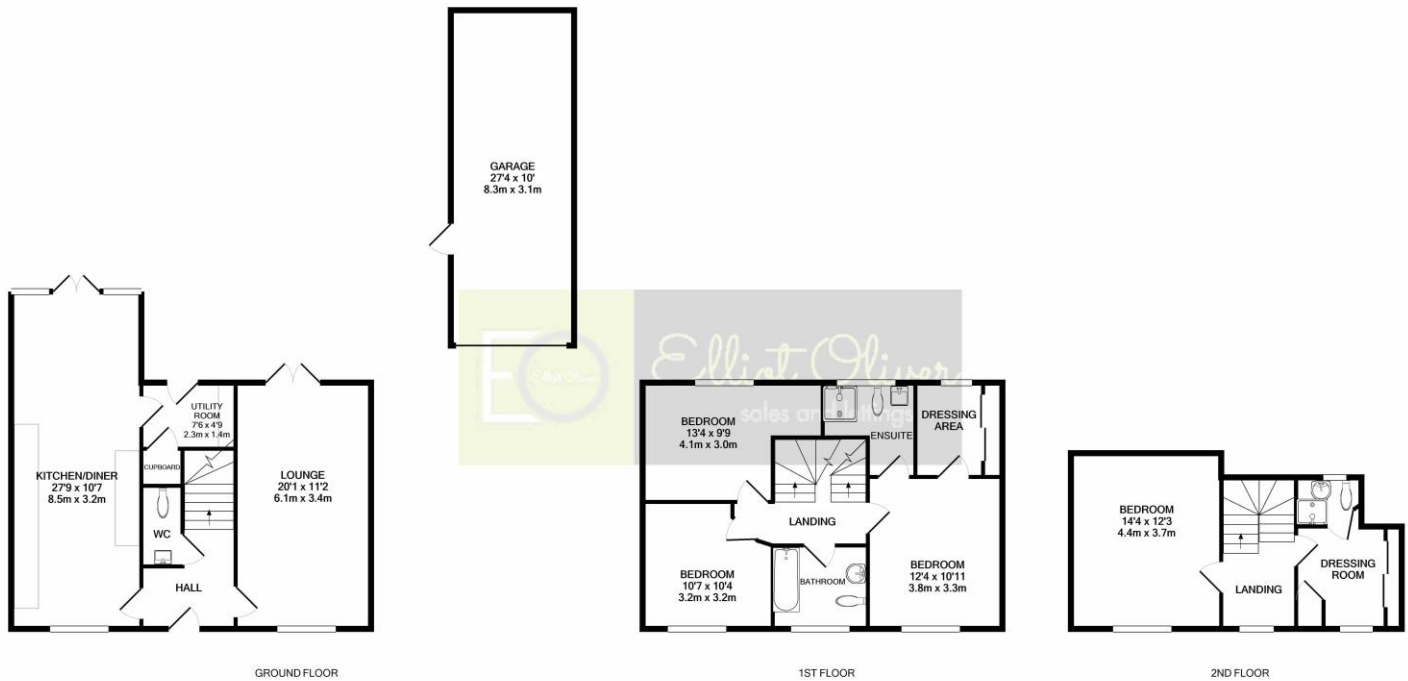












GROUND FLOOR


1ST FLOOR

2ND FLOOR

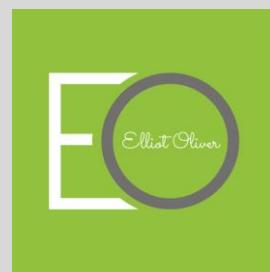
TOTAL APPROX. FLOOR AREA 1912 SQ.FT. (177.6 SQ.M.)

Whilst every attempt has been made to ensure the accuracy of the floor plan contained here, measurements of doors, windows, rooms and any other items are approximate and no responsibility is taken for any error, omission, or mis-statement. This plan is for illustrative purposes only and should be used as such by any prospective purchaser. The services, systems and appliances shown have not been tested and no guarantee as to their operability or efficiency can be given.
Made with lettopix ©2021

Energy Efficiency Rating

	Current	Potential
<i>Very energy efficient - lower running costs</i>		
(92-100) A	87	94
(81-91) B		
(69-80) C		
(55-68) D		
(39-54) E		
(21-38) F		
(1-20) G		
<i>Not energy efficient - higher running costs</i>		
England, Scotland & Wales		EU Directive 2002/91/EC 
Address:		
Zura:		

Agents Note: Whilst every care has been taken to prepare these sales particulars, they are for guidance purposes only. All measurements are approximate are for general guidance purposes only and whilst every care has been taken to ensure their accuracy, they should not be relied upon and potential buyers are advised to recheck the measurements



OFFICE
 101 Promenade,
 Cheltenham,
 Gloucestershire, GL50
 1NW
 info@elliottoliver.co.uk