



AVENUE COURT | CHELSEA SW3



A BRIGHT AND BEAUTIFULLY PRESENTED LOWER GROUND FLOOR, THREE BEDROOM LATERAL FLAT IN THIS WELL RUN PERIOD MANSION BLOCK ON DRAYCOTT AVENUE.

The flat benefits from a large open plan reception room and kitchen area with 3 double bedrooms, 2 bathrooms, cloakroom and air-conditioning. The block is very well managed and benefits from an on-site weekly caretaker.

Avenue Court is located close to the King's Road and Sloane Square benefiting from all the excellent shopping, restaurant and transport facilities the area has to offer. Sloane Square underground station (Circle & District lines) is some 10 minutes walk away.





ACCOMMODATION

3 Bedrooms | Reception Room | Kitchen | Dining Area | En-suite Shower Room | Bathroom | Guest Cloakroom
Utility Room | Air-Conditioning | Resident Caretaker | EPC C

TERMS

Asking Price £1,550,000

Tenure 154 years from 24 June 1967 (less five days) therefore approximately 100 years unexpired.

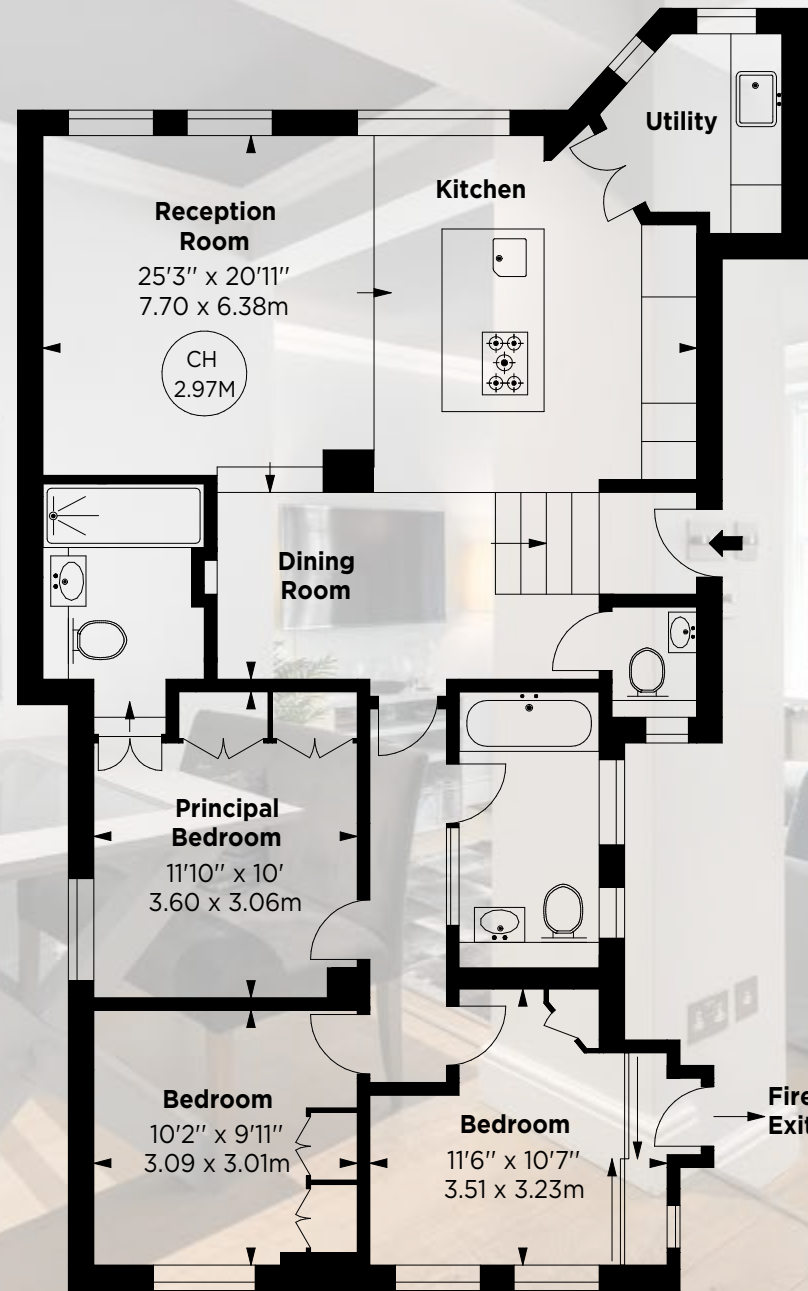
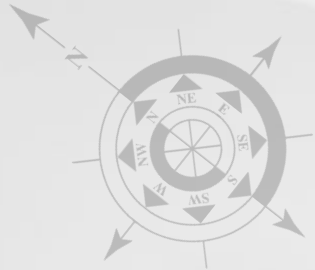
Service Charge £3,391.35 half yearly (including heating & hot water)

Ground Rent Nominal

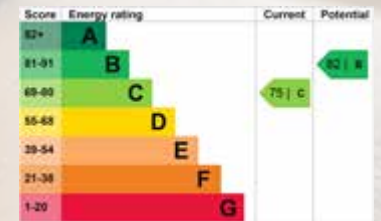
Local Authority The Royal Borough of Kensington and Chelsea



APPROXIMATE GROSS INTERNAL AREA
1,039 SQUARE FEET 96.52 SQUARE METRES



Lower Ground Floor



MASKELLS

71 WALTON STREET, LONDON, SW3 2HT
+44 (0)207 581 2216
www.maskells.co.uk sales@maskells.co.uk