



Bedford House | The Pightle | Needham Market | IP6 8AQ

Specialist marketing for | Barns | Cottages | Period Properties | Executive Homes | Town Houses | Village Homes


TOWN & VILLAGE
PROPERTIES

To find out more or arrange a viewing please contact 01449 722003 or visit www.townandvillageproperties.co.uk

Bedford House, The Pightle, Needham Market, Suffolk, IP6 8AQ

“A spacious & stylishly presented four-bedroom family house located in a ‘tucked away’ position conveniently close to Needham’s High Street, offering flexible accommodation, private gardens, garage, music room/home office & off-road parking.”

Description

A deceptively spacious four-bedroom detached house occupying a delightful ‘tucked away’ position offering generous flexible family living.

Bedford House is stylishly presented throughout and further benefits from a striking modern fitted kitchen, luxury bathroom suites and generous games/entertainments room which could also be used as a home office or gym area if desired.

Outside the property occupies a fabulous secluded position with two enclosed courtyard style gardens, off-road parking and garage.

About the Area

Needham Market is a desirable small town situated in the heart of Mid Suffolk between the towns of Bury St Edmunds and Ipswich. There are a range of everyday amenities and individual shops including butcher, baker, tea shops/cafes, public houses, take-away restaurants, a post office and a Co-op supermarket. There is also a library, community centre, dentist and a good local primary school. Alder Carr Farm offers fresh farm food for sale and a restaurant.

Needham Market also has good transport links with bus and train services into Stowmarket and Ipswich, where there are mainline services to London Liverpool Street Station. A range of events are held throughout the year, including street fairs and raft racing at Needham Lake which is a Conservation Area with a number of countryside walks.

The nearby towns of Stowmarket, Bury St Edmunds and Ipswich provide further amenities, recreational and cultural facilities and a range of individual high street stores.

Directions

Approaching Needham Market from the Stowmarket direction, turn left into The Pightle just after the butcher’s shop on the High Street and the property will be found shortly after on the left-hand side.

The accommodation comprises:

Canopy Entrance Porch

Part-glazed front door to:

Entrance Hall

Radiator, stairs to first floor, door to kitchen and door to:

Sitting Room Approx 18’5 x 13’5 (5.6m x 4.1m)

L-shaped with window to front elevation, coved ceiling, radiator, wall-lights, glazed double doors to dining room, glazed double doors to garden room and open to a cosy reading nook area with skylight and measuring approximately 12’1 x 8’3 (3.6m x 2.5m).

Garden Room Approx 16’1 x 7’5 (4.9m x 2.2m)

French doors with windows to either side opening to the courtyard garden, vaulted ceiling, radiator, wall-lights and glazed double doors opening to:

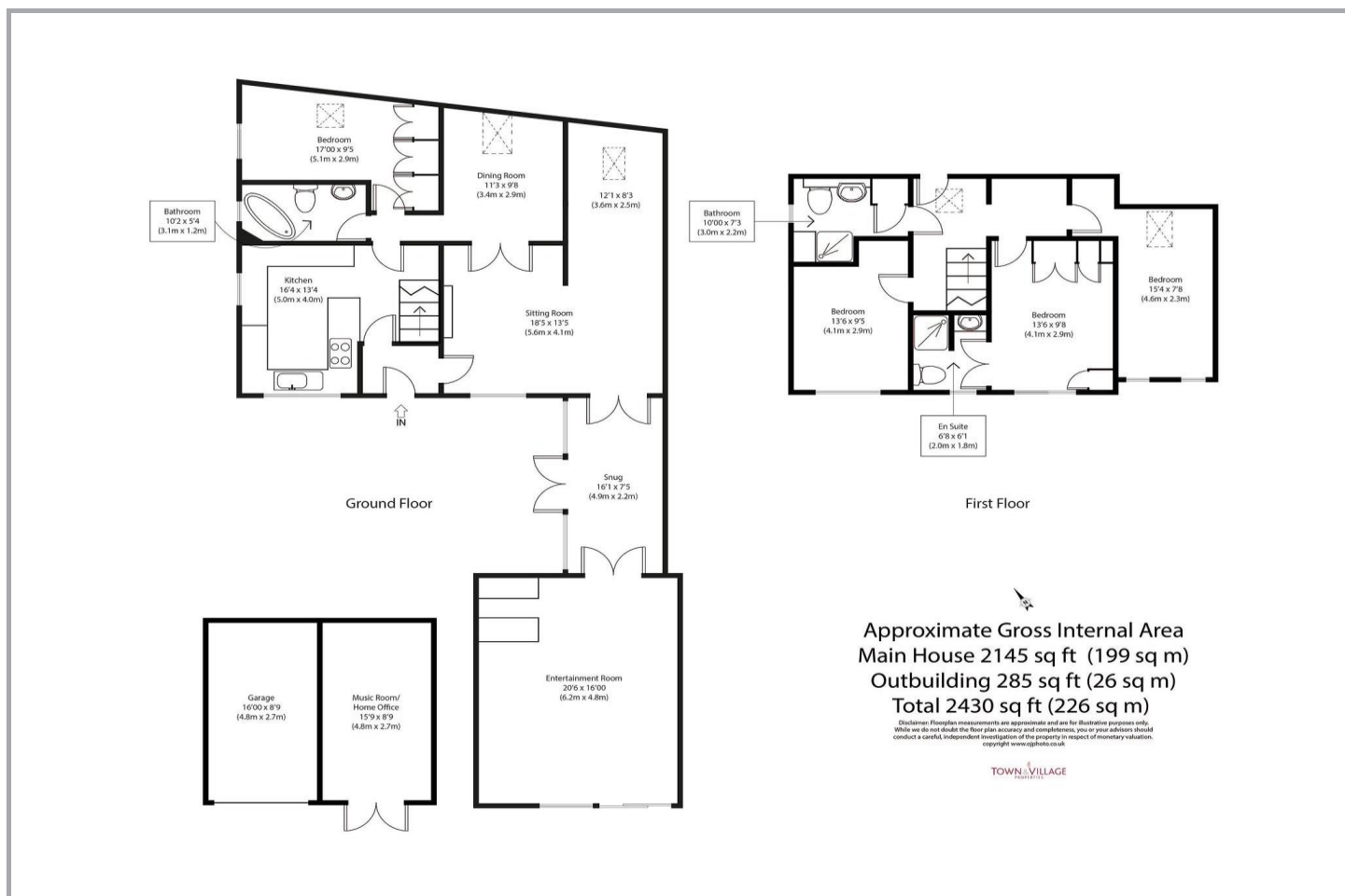
Games/Entertainments Room Approx 20’6 x 16’ (6.2m x 4.8m)

Sliding patio doors to front courtyard, coved ceiling, ceiling down-lights and radiator.

Dining Room Approx 11’3 x 9’8 (3.4m x 2.9m)

Skylight, part-vaulted ceiling, radiator and wall-lights.





Bedroom Approx 17' x 9'5 (5.1m x 2.9m)

Skylight, part-vaulted ceiling, window to side elevation and radiator.

Family Bathroom

Luxury fitted comprising claw and ball foot freestanding roll-top bath with freestanding mixer tap and separate hand-held shower attachment, low level flushing w.c, pedestal hand wash basin, fully tiled walls, heated towel ladder, ceiling down-lighters, floor lighting, frosted window to side elevation and extractor fan.

Kitchen Approx 16'4 x 13'4 (5.0m x 4.0m)

A modern fitted kitchen comprising butler sink unit with mixer tap over, work surfaces with base cupboards and soft-closing drawers under, eye-level units, integrated fridge freezer, built-in Zanussi double oven, built-in Zanussi Induction hob, fully tiled walls, ceiling down-lighters, space for washing machine and dishwasher and window to front and side elevations.

First Floor Galleried Landing

Access to loft, skylight, eaves storage cupboard and doors to:

Bedroom Approx 13'6 x 9'8 (4.1m x 2.9m)

Window to front elevation, tall wall-mounted radiator, fitted wardrobes and double doors to:

En-Suite Shower Room

Fully tiled shower cubicle, counter mounted hand wash basin with storage under, low level flushing w.c with concealed cistern, fully tiled walls with embedded lighting, tiled flooring, heated towel ladder, extractor fan and frosted window to front elevation.

Bedroom Approx 15'4 x 7'8 (4.6m x 2.3m)

Two skylights to front elevation, skylight to rear elevation and radiator.

Shower Room

Comprising built-in shower cubicle, vanity sink unit, low level flushing w.c with concealed cistern, wall-mounted heated towel ladder, fully tiled walls with embedded lighting and built-in towel storage, cupboard housing Ideal gas fired boiler, frosted window to side elevation,

extractor fan and tiled flooring.

Bedroom Approx 13'6 x 9'5 (4.1m x 2.9m)

Window to front elevation, fitted wardrobes and tall wall-mounted radiator.

Outside

Bedford House occupies a private 'tucked away position accessed via newly fitted wrought iron gates. The gates open to an attractive block paved driveway/courtyard which provides access to the garage, gym/home office and games/entertainments room. From this courtyard a pedestrian gate opens to a delightful enclosed garden with pathway to the front door. The garden is beautifully maintained with an area laid to lawn with raised flower beds incorporating seating, further pretty flower and shrub borders and attractive patio which can be accessed via double doors from the garden room. Within the garden is outside courtesy lighting and outside power sockets.

Music Room/Home Office Approx 15'9 x 8'9 (4.8m x 2.7m)

Power, light and French doors opening to front courtyard.

Local Authority

Mid Suffolk District Council

Council Tax Band – E

Services

Mains water, drainage and electricity. Gas-fired heating.



Energy performance certificate (EPC)

Bedford House The Rightle Needham Market IPSWICH IP6 8AQ	Energy rating D	Valid until: 19 December 2028 Certificate number: 8508-7122-3059-4047-0996
--	---------------------------	---

Property type	Detached house
Total floor area	140 square metres

Rules on letting this property

Properties can be rented if they have an energy rating from A to E.

If the property is rated F or G, it cannot be let, unless an exemption has been registered. You can read [guidance for landlords on the regulations and exemptions \(https://www.gov.uk/guidance/domestic-private-rented-property-minimum-energy-efficiency-standard-landlord-guidance\)](https://www.gov.uk/guidance/domestic-private-rented-property-minimum-energy-efficiency-standard-landlord-guidance).

Energy efficiency rating for this property

This property's current energy rating is D. It has the potential to be C.

[See how to improve this property's energy performance.](#)



The graph shows this property's current and potential energy efficiency.

Properties are given a rating from A (most efficient) to G (least efficient).

Properties are also given a score. The higher the number the lower your fuel bills are likely to be.

For properties in England and Wales:

the average energy rating is D
the average energy score is 60



Disclaimer

Town & Village Properties (and its subsidiaries and their joint Agents where applicable) for themselves and for the vendors or lessors of this property for whom they act, give notice that (I) these particulars are a general outline only for the guidance of prospective purchasers or tenants, and do not constitute the whole or any part of an offer or contract (II) Town & Village Properties cannot guarantee the accuracy of any description, dimensions, references to conditions, necessary permissions for use and occupancy and other details contained herein and prospective purchasers or tenants must not rely on them as statements of fact or representations and must satisfy themselves as to their accuracy, (III) No employee of Town & Village Properties (and its subsidiaries and their joint Agents where applicable) has any authority to make or give any representation or warranty or enter into any contract whatever in relation to the property, (IV) Town & Village Properties (and its subsidiaries and their joint Agents where applicable) will not be liable in negligence or otherwise, for any loss arising from the use of these particulars and Town & Village Properties (and its subsidiaries and their joint Agents where applicable) have not tested any apparatus, equipment, fixtures and fittings or services and so cannot verify that they are in working order or fit for the purpose. A buyer is advised to obtain verification from their Solicitor, (V) Photographs will only show certain parts of the property and assumptions should not be made in respect of those parts of the property that have not been photographed. (Items or contents shown in the photographs are not included as part of the sale unless specified otherwise. It should not be assumed the property will remain as shown in the photograph. Photographs are taken using a wide-angle lens.



Town and Village Properties
Grove House, 87 High Street
Needham Market
Suffolk
IP6 8DQ

Email: info@townandvillageproperties.co.uk