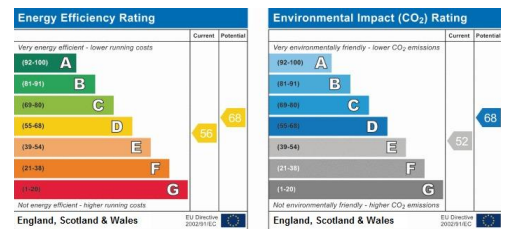
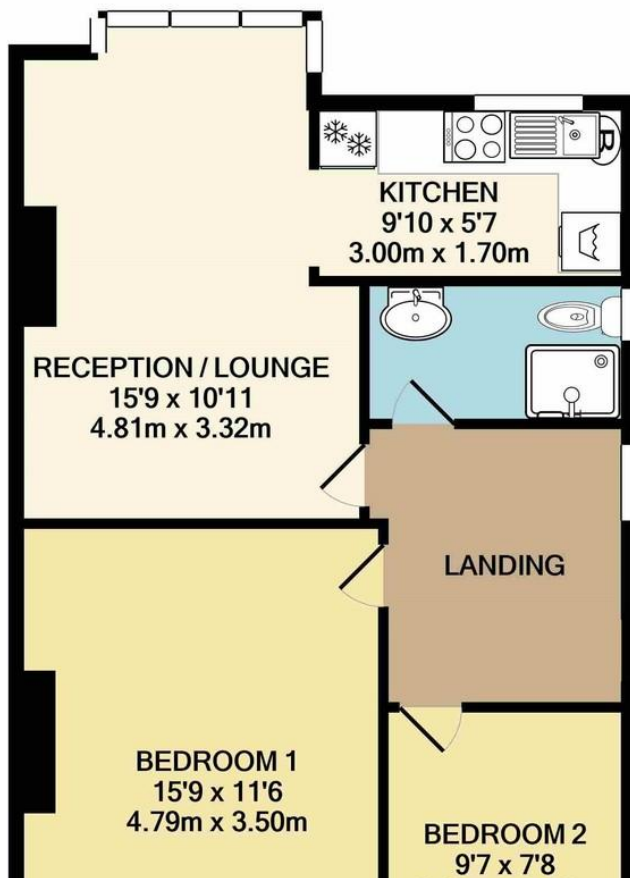




Watford Way
, London, , NW4 4TR

Guide Price £350,000

Property Summary



- First Floor Maisonette
- Two bedrooms
- Leasehold
- Garage
- Parking
- On the main road
- Fitted kitchen
- Ideal for investment or first time buyer
- Excellent Transport Links & Local Amenities
- Quick sale

38 Court Parade
Wembley
Middlesex
HA0 3HS

www.propertyhubltd.com
sales@propertyhubltd.com
0208 459 3333

Agents Note: Whilst every care has been taken to prepare these particulars, they are for guidance purposes only. All measurements are approximate and for general guidance purposes only and whilst every care has been taken to ensure their accuracy, they should not be relied upon and potential buyers/tenants are advised to recheck the measurements