



Residential Park Home

Chippenham, Wiltshire, SN15

Prestige Sonata (42x22)



0800 954 1288

sales@sellmygroup.co.uk



£235,000

Chippenham, Wiltshire, SN15

The Prestige Sonata bungalow style park home has a semi open-plan layout with large windows and semi vaulted ceiling. The spacious, modern fitted kitchen features oak effect worktops and integrated appliances. The master bedroom features a double bed with a padded headboard, freestanding bedside cabinets and a walk-in wardrobe and the spacious en suite features a walk-in shower with a glass screen.

Nestled on the outskirts of Bradenstoke village, the park has been lovingly established through generations of the same family. With the wide sweeping roads and areas of greenery ensuring the park provides its residents with a sense of spaciousness.

The historical market town of Chippenham is one of the West Country's most vibrant towns situated on the banks of the River Avon and a little over an hour's journey from central London, Chippenham offers an ideal centre for relaxation and exploration of rural Wiltshire, Bath and the Cotswolds. Chippenham is 4 miles south of the M4 and on the mainline rail route from London Paddington to the West Country and just 10 minutes by train to Bath.

- Brand new home
- Fully Fitted Kitchen
- Fully Furnished
- Garage
- Immediate Occupancy Available
- Landscaped gardens
- Part Exchange Available
- Plots Available
- Retirement Property

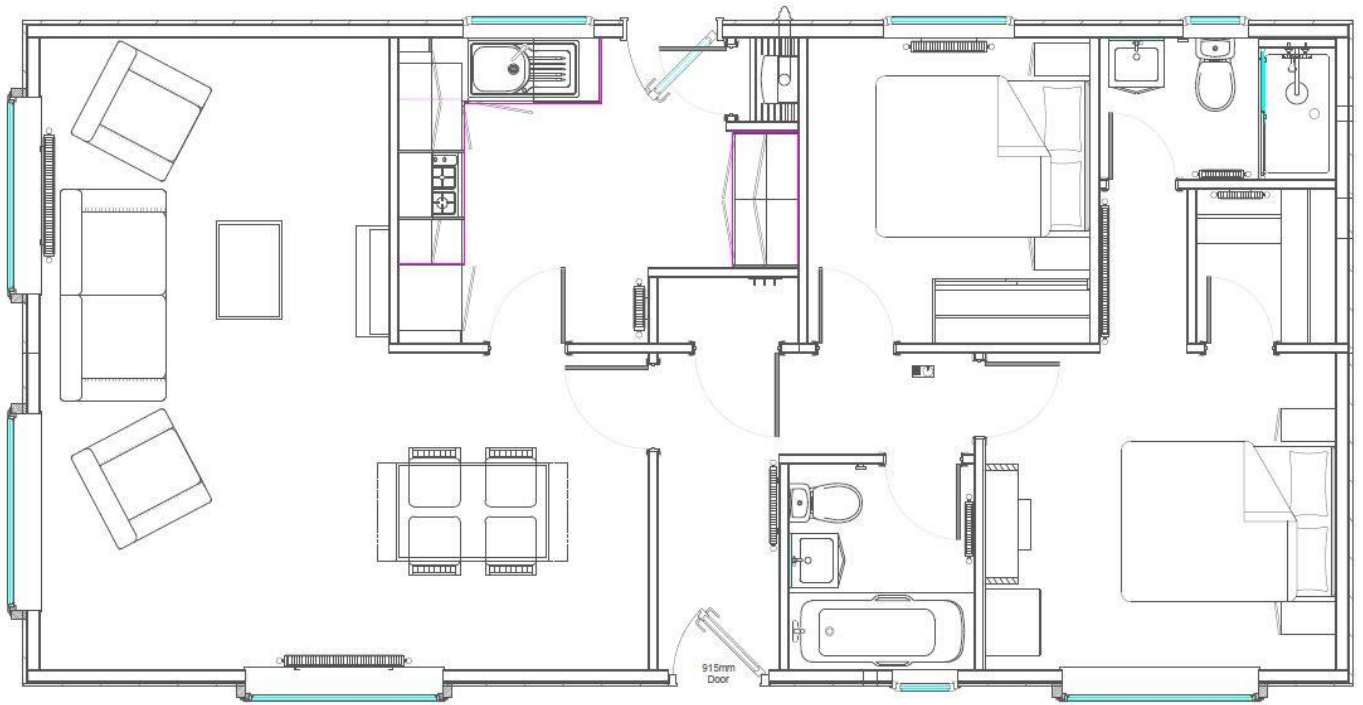
2 x  2 x 

**Part Exchange with
Quickmove Properties**

Our customers benefit from speed, convenience, and certainty. Secure your dream park home without worrying about estate agents, viewings, negotiations, or the risk of a sale falling through.



Floor Plan



CONTACT DETAILS

0800 954 1288

sales@sellmygroup.co.uk

