



A chance to purchase this character stone four-bedroom family home in the popular Leicestershire village of Wymondham.

- Character Stone Property
- Popular Village Location
- Panoramic Countryside Views
- High Quality Standard Of Finish
- Family Home
- Garage

The Poplars, 2 Melton Road, LE14 2AR
Offers Over £515,000

Situated on the edge of this popular village with good amenities and easy access to the A1, this four bedroom character three storey stone attached home benefits from backing on to open grassland, and has recently undergone full renovation and modernisation with replacement double glazed windows and new staircase layout giving more useable accommodation comprising; entrance hall, bay fronted sitting room with wood burner, conservatory off linking to utility downstairs cloakroom, large open plan breakfast kitchen with French doors to terrace, separate dining room, two large bedrooms and refurbished bathroom to first floor plus two further double bedrooms to second floor, useful range of outbuildings plus garaging, good size mature garden.

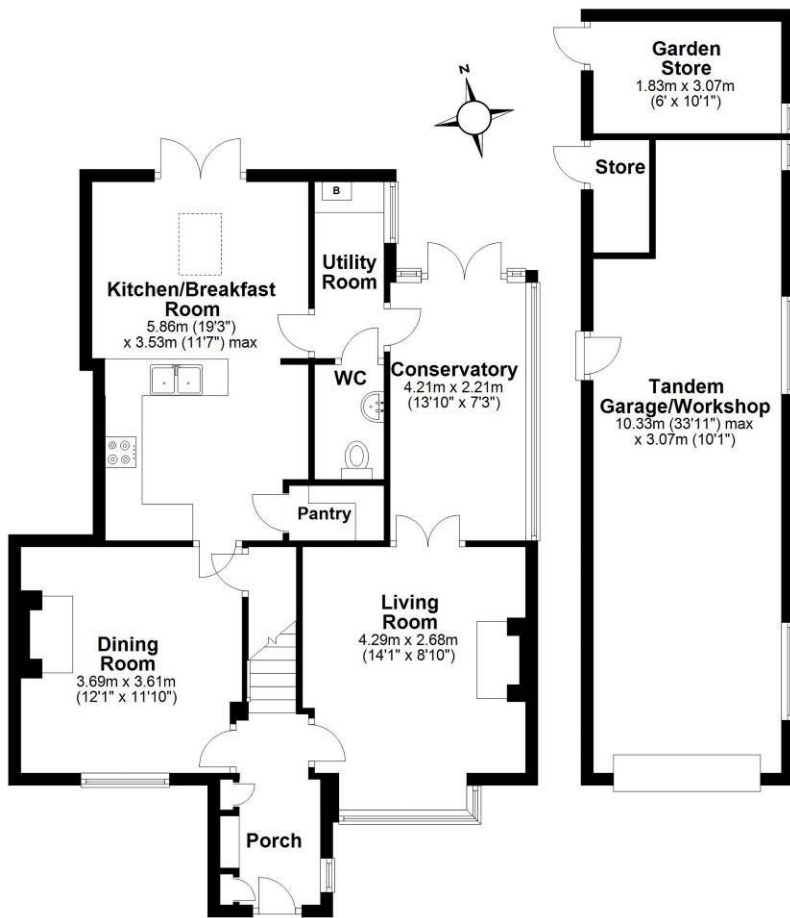




For more information contact one of our team. Outside office hours via outofhours@moorestateagents.com 7 days a week until 9pm.

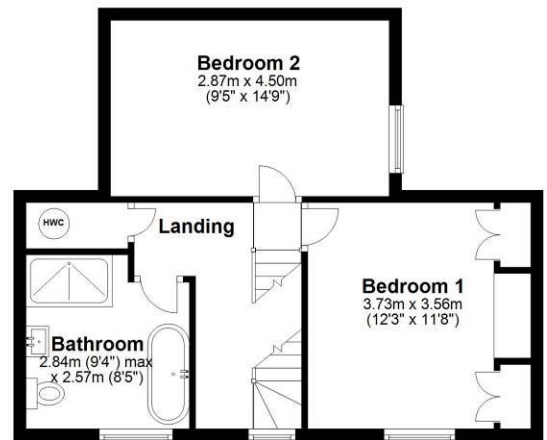
Ground Floor

Approx. 110.9 sq. metres (1193.2 sq. feet)



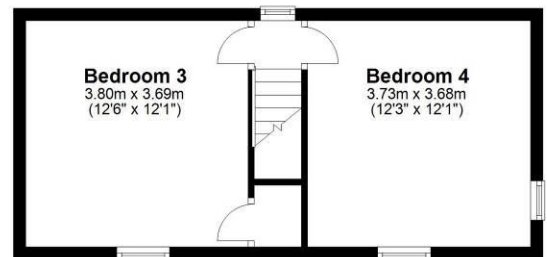
First Floor

Approx. 44.3 sq. metres (477.1 sq. feet)



Second Floor

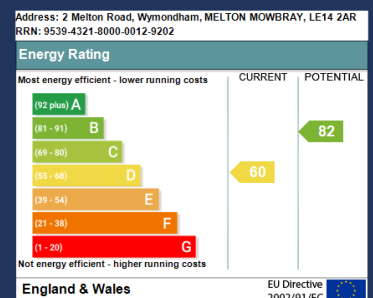
Approx. 31.3 sq. metres (337.2 sq. feet)



Total area: approx. 186.5 sq. metres (2007.5 sq. feet)

This floor plan is not to scale. They are for guidance only and accuracy is not guaranteed. Plan was produced by ADR Energy Assessors
Plan produced using PlanUp.

Moore V Ltd trading as Moores Estate Agents gives notice that: 1. These particulars do not constitute an offer or contract or part thereof. 2. All descriptions, photographs and plans are for guidance only and should not be relied upon as statements or representations of fact. All measurements are approximate and not necessarily to scale. Any prospective purchaser must satisfy themselves of the correctness of the information within the particulars by inspection or otherwise. 3. Moore V Ltd trading as Moores Estate Agents does not have any authority to give any representations or warranties whatsoever in relation to this property (including but not limited to planning/building regulations), nor can it enter into any contract on behalf of the Vendor. 4. Moore V Ltd trading as Moores Estate Agents does not accept responsibility for any expenses incurred by prospective purchasers in inspecting properties which have been sold, let or withdrawn. 5. If there is anything of particular importance to you, please contact this office and we will try to have the information checked for you.



25 Burton Street,
Melton Mowbray
01664 491610

36 High Street,
Oakham
01572 757979

2 Orange Street,
Uppingham
01572 821935

1 Sheep Market,
Stamford
01780 484555

London Platform,
Peterborough Station
01733 788888

London Platform,
Grantham Station
01476 855618

Follow us on... Facebook Twitter

www.mooresestateagents.com | office@mooresestateagents.com

OnTheMarket.com rightmove