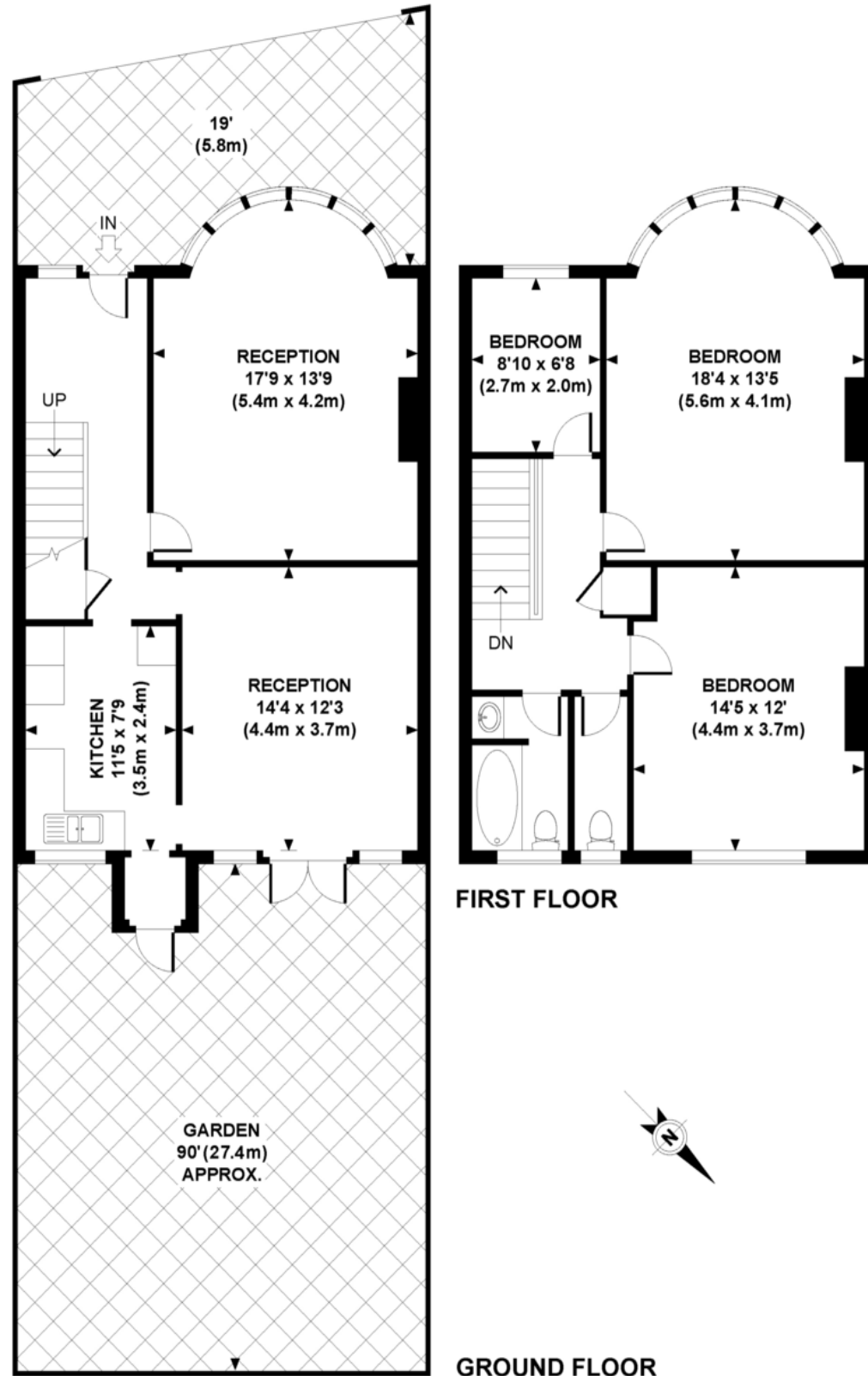


Harlesden Gardens, NW10



Whilst every attempt has been made to ensure the accuracy of this floor plan; measurements of door, windows, rooms and all other items are approximate. No responsibility is taken for any error, omission or mis-statement. This floor plan is for illustrative purposes only, and should be treated as such.



Harlesden Gardens, London, NW10 4HB

£799,950 Freehold

Key Features

- Period family home
- Highly sought-after location
- Needs modernisation
- Huge potential
- 1260 sq ft
- Gardens
- Offers invited
- Ideal developers

Description

We are favoured with sole agency instructions to offer this substantial double bay fronted period family home in the beautiful and highly sought after Harlesden Gardens.

The property requires complete modernisation but offers a very rare chance to acquire a substantial family home so close to the stunning Roundwood park and with the opportunity for the discerning purchaser to create a dream home.

