

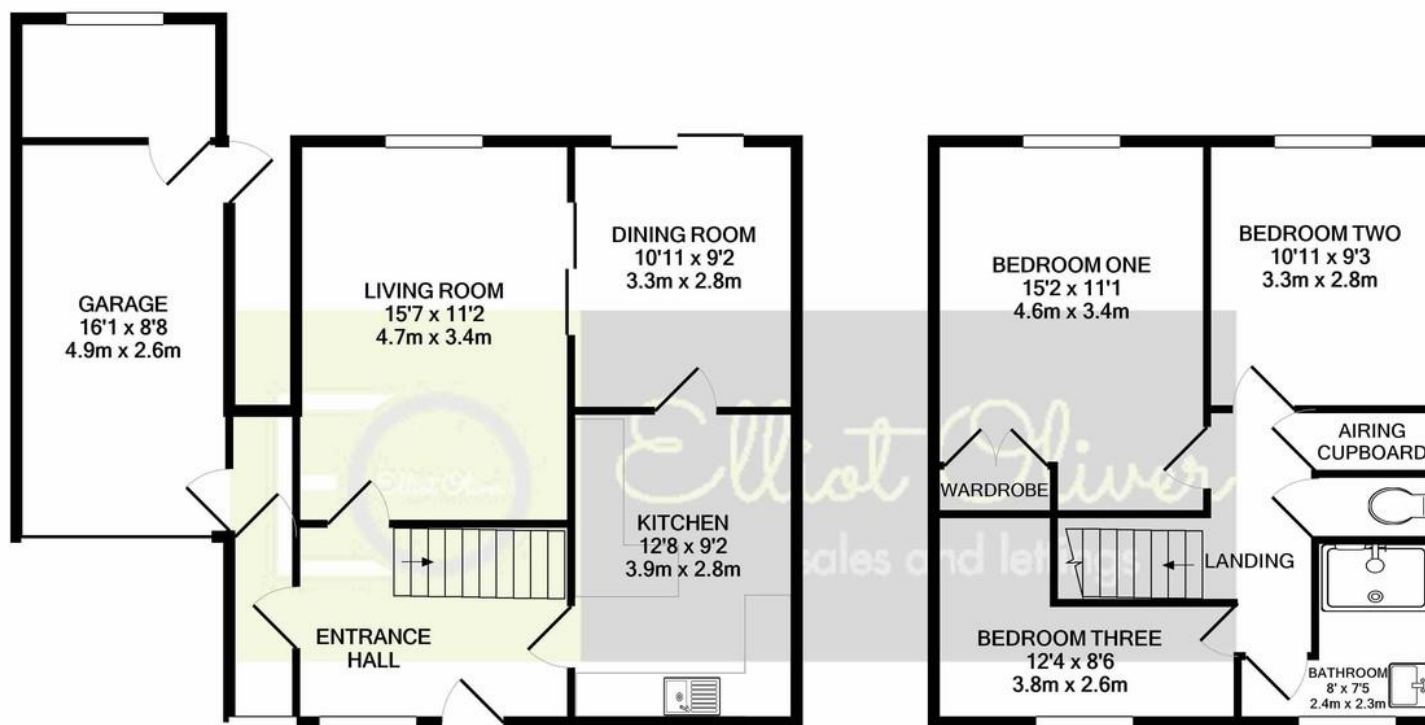


## Paddocks Lane

, Cheltenham, GL50 4NX

Asking Price Of £399,950

- Three Bedroom
- Link-Detached
- No Onward Chain
- Stunning Location
- West Facing Garden
- Two Double Bedrooms
- Walking Distance From Pittville Park
- Garage



GROUND FLOOR  
APPROX. FLOOR  
AREA 697 SQ.FT.  
(64.7 SQ.M.)

1ST FLOOR  
APPROX. FLOOR  
AREA 481 SQ.FT.  
(44.7 SQ.M.)

TOTAL APPROX. FLOOR AREA 1178 SQ.FT. (109.4 SQ.M.)

Whilst every attempt has been made to ensure the accuracy of the floor plan contained here, measurements of doors, windows, rooms and any other items are approximate and no responsibility is taken for any error, omission, or mis-statement. This plan is for illustrative purposes only and should be used as such by any prospective purchaser. The services, systems and appliances shown have not been tested and no guarantee as to their operability or efficiency can be given  
Made with Metropix ©2021

## COUNCIL TAX BAND

Tax band

## TENURE

Freehold

## LOCAL AUTHORITY

Cheltenham Borough Council

## OFFICE

101 Promenade, Cheltenham,  
Gloucestershire, GL50 1NW

T: 01242 321091

E: [info@elliottoliver.co.uk](mailto:info@elliottoliver.co.uk)

W: [www.elliottoliver.co.uk](http://www.elliottoliver.co.uk)

Agents Note: Whilst every care has been taken to prepare these sales particulars, they are for guidance purposes only. All measurements are approximate are for general guidance purposes only and whilst every care has been taken to ensure their accuracy, they should not be relied upon and potential buyers are advised to recheck the measurements