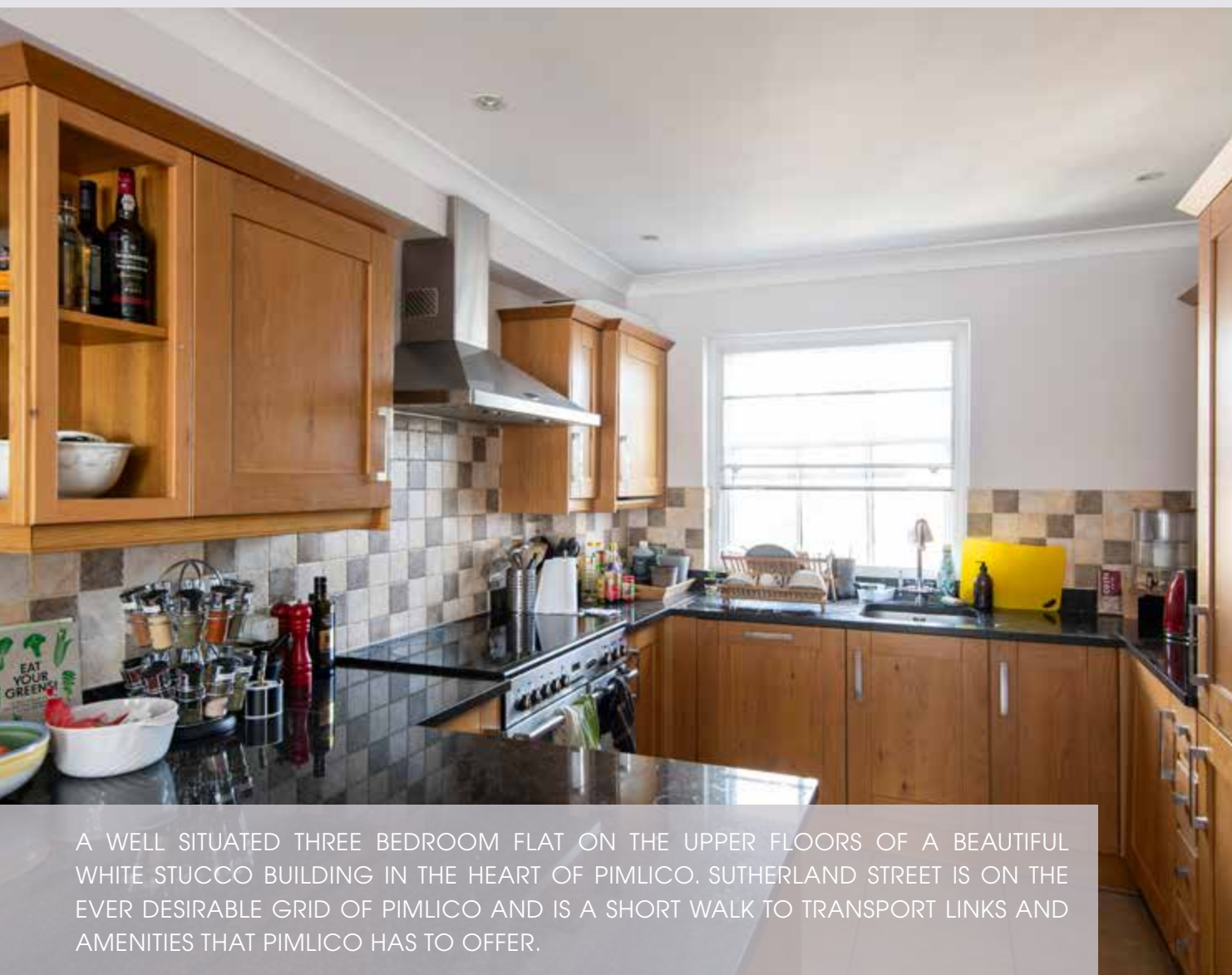




SUTHERLAND STREET | SW1V



A WELL SITUATED THREE BEDROOM FLAT ON THE UPPER FLOORS OF A BEAUTIFUL WHITE STUCCO BUILDING IN THE HEART OF PIMLICO. SUTHERLAND STREET IS ON THE EVER DESIRABLE GRID OF PIMLICO AND IS A SHORT WALK TO TRANSPORT LINKS AND AMENITIES THAT PIMLICO HAS TO OFFER.

The flat is entered on the second floor and occupies both the third and fourth floor of the building. The third floor offers a lateral and open plan kitchen combined with living area which is a great space for entertaining and relaxing. The spacious family bathroom is also located on the third floor. The fourth floor accommodation is comprised of three double bedrooms one of which has an en-suite shower room. The principle bedroom and second bedroom both offer built in storage.





The Pimlico Grid is quiet residential area with a 'village' feel and plenty of amenities close by. The property is well situated for excellent transport links, being 0.5 miles to Pimlico tube station (Victoria Line), 0.9 miles to Sloane Square (Circle & District Lines) and trains out of London from Victoria Train and Bus Stations, 0.8 miles.

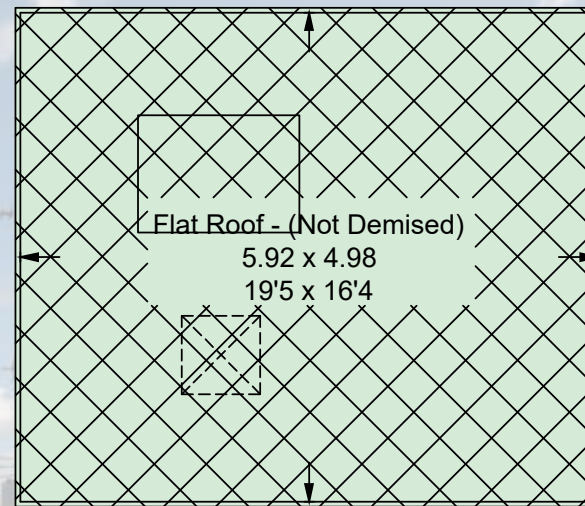
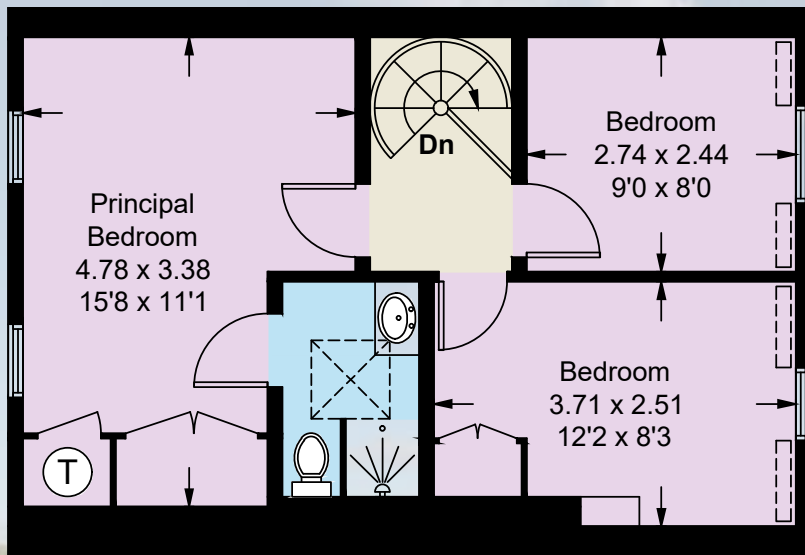
ACCOMMODATION

Open Plan Kitchen/Reception Room | Principle Bedroom with En- Suite Bathroom | Second Bedroom | Third Bedroom | Family Bathroom

TERMS

Offers in Excess of £870,000 | Tenure Share of Freehold | Service Charge TBC
Local Authority Westminster

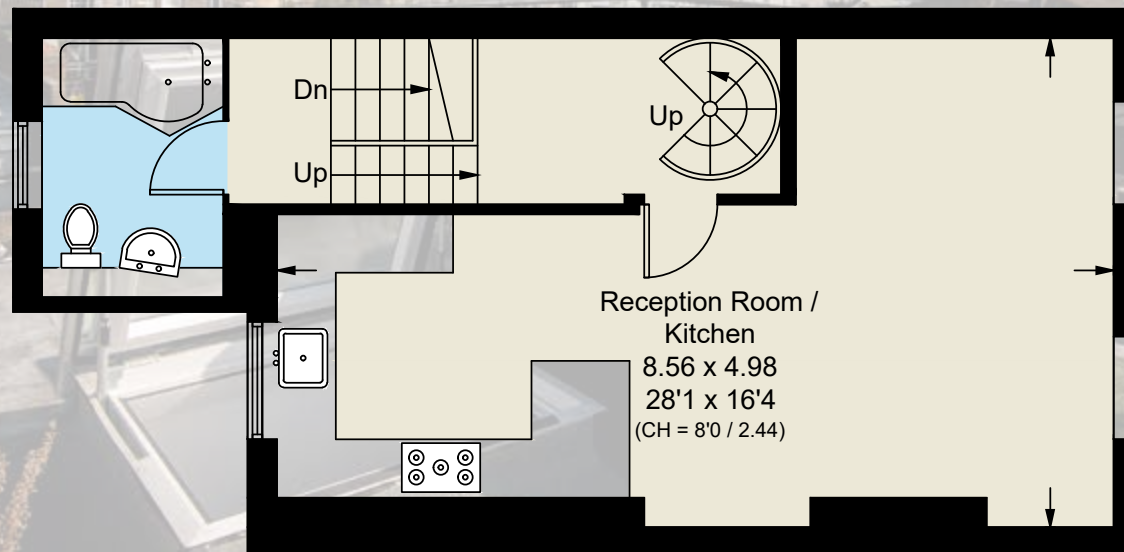
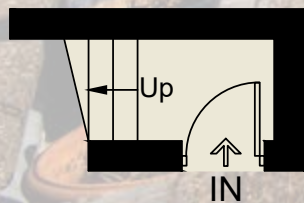




APPROXIMATE GROSS INTERNAL AREA
982 SQUARE FEET 91.2 SQUARE METRES
INCLUDING LIMITED USE AREA
(0.9 SQUARE METRES / 10 SQUARE FEET)



[] = Reduced head height below 1.5m



MASKELLS

71 WALTON STREET, LONDON, SW3 2HT
+44 (0)207 581 2216
www.maskells.co.uk sales@maskells.co.uk