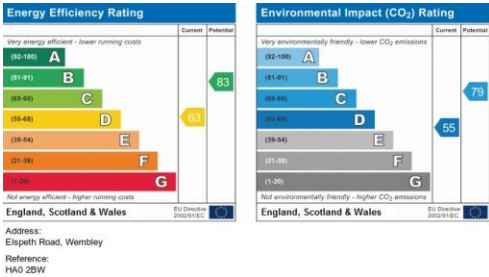
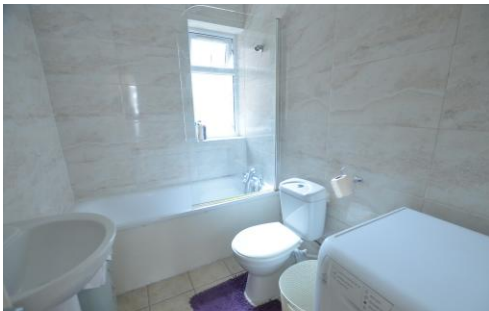




Elspeth Road
, Wembley, , HA0 2BW

£2,999 pcm

Property Summary



- Six Bedrooms
- Open Plan Reception / Kitchen
- Two Bathrooms & Separate WC
- Gas Central Heating
- Mega-flow System
- Laminated flooring
- Fully Double Glazed
- Private Rear Garden
- Available from 15th of October
-

38 Court Parade
Wembley
Middlesex
HA0 3HS

www.propertyhubltd.com
info@propertyhubltd.com
0208 903 1002

Agents Note: Whilst every care has been taken to prepare these particulars, they are for guidance purposes only. All measurements are approximate are for general guidance purposes only and whilst every care has been taken to ensure their accuracy, they should not be relied upon and potential buyers/tenants are advised to recheck the measurements