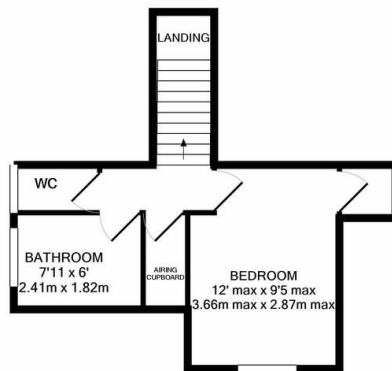
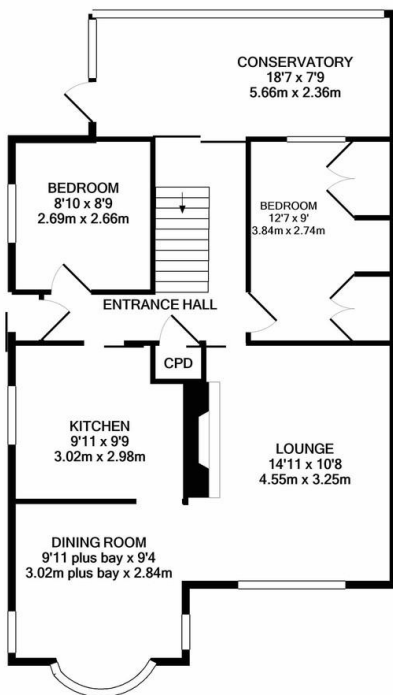


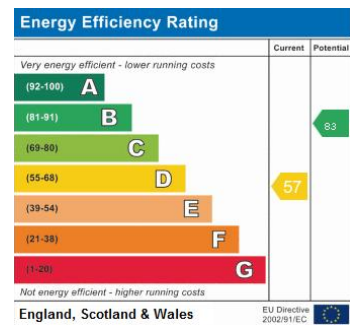


Property Summary

*** No Chain *** Well proportioned semi detached house/bungalow occupying a pleasant corner plot on the Little Hill estate in Wigston. The accommodation comprises porch, entrance hall, lounge, dining room, kitchen, conservatory, three bedrooms, bathroom, gardens to the front, side and rear and detached garage. Call Phillips George to book your viewing today!



FLOOR PLAN BY PHILLIPS GEORGE
TOTAL APPROX. FLOOR AREA 1116 SQ.FT. (103.7 SQ.M.)
Whilst every attempt has been made to ensure the accuracy of the floor plan contained here, measurements of doors, windows, rooms and any other items are approximate and no responsibility is taken for any error, omission, or mis-statement. This plan is for illustrative purposes only and should be used as such by any prospective purchaser. The services, systems and appliances shown have not been tested and no guarantee as to their operability or efficiency can be given
Made with Metropix 52021



- No Chain
- Corner Plot
- Three Bedrooms
- Semi Detached
- House/Bungalow
- Detached Garage
- Conservatory
- Two Reception Rooms

phillips george | sales & lettings

Agents Note: Whilst every care has been taken to prepare these sales particulars, they are for guidance purposes only. All measurements are approximate and for general guidance purposes only and whilst every care has been taken to ensure their accuracy, they should not be relied upon and potential buyers are advised to recheck the measurements

46 Long Street, Wigston, Leicestershire, LE18 2AH

info@phillipsgeorge.co.uk

0116 216 8178

